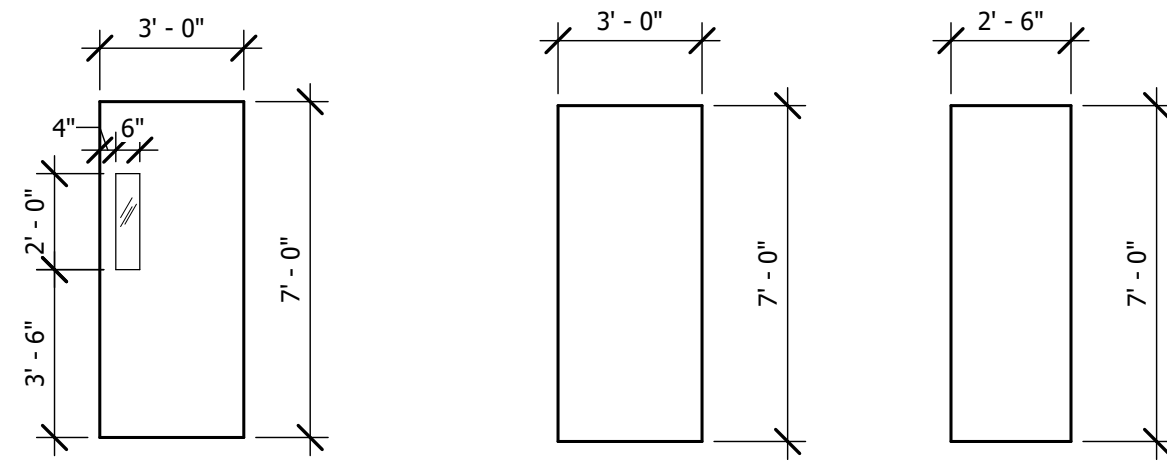


HOLLOW METAL DOOR FRAME
 2 FRAME TYPE B
 1/4" = 1'-0"
 1 FRAME TYPE A
 1/4" = 1'-0"



DOOR TYPE 3
 PLASTIC LAMINATE DOOR
 TEMPERED VISION LITE
 DOOR TYPE 2
 PLASTIC LAMINATE
 DOOR
 DOOR TYPE 1
 PLASTIC
 LAMINATE DOOR

5 Door Type 3
 1/4" = 1'-0"
 4 Door Type 2
 1/4" = 1'-0"
 3 Door Type 1
 1/4" = 1'-0"

GENERAL NOTES

1. NOTIFY ARCHITECT OF ANY DISCREPANCIES AND/OR OMISSIONS.
2. REMODEL PROJECTS REQUIRE FIELD VERIFICATION BY SUBCONTRACTOR.
3. SAMPLE SHALL BE SUBMITTED TO ARCHITECT FOR APPROVAL.

Hardware Set #01 - Office

1-1/2 pair Falcon BB 4.5" x 4.5" full mortise hinges
 Falcon MA521 Office mortise lock, Dane lever, Gala Rose
 Floor door stop
 Wall stop

Hardware Set #02 - Passage

1-1/2 pair Falcon BB 4.5" x 4.5" full mortise hinges
 Falcon MA101 Passage mortise lock, Dane lever, Gala Rose
 Wall stop

Hardware Set #03 - Storeroom

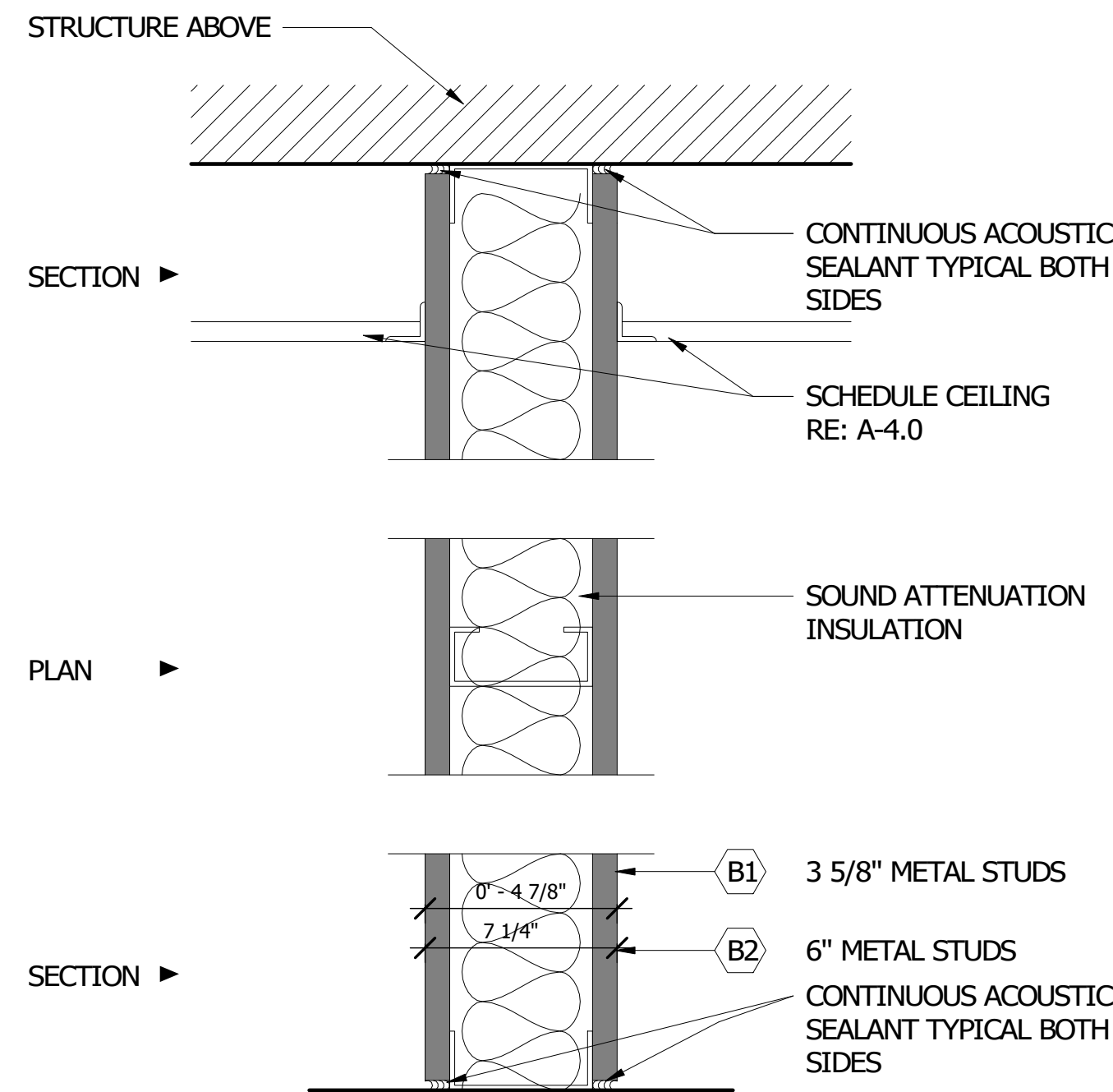
1-1/2 pair Falcon BB 4.5" x 4.5" full mortise hinges
 Falcon MA371 Store Door lock, Dane lever, Gala Rose
 Closer
 Wall stop

Hardware Set #04 - Privacy

1-1/2 pair Falcon BB 4.5" x 4.5" full mortise hinges
 Falcon MA301 Privacy mortise lock, Gala Rose
 Occupancy Indicator
 Closer
 Wall stop

DOOR SCHEDULE

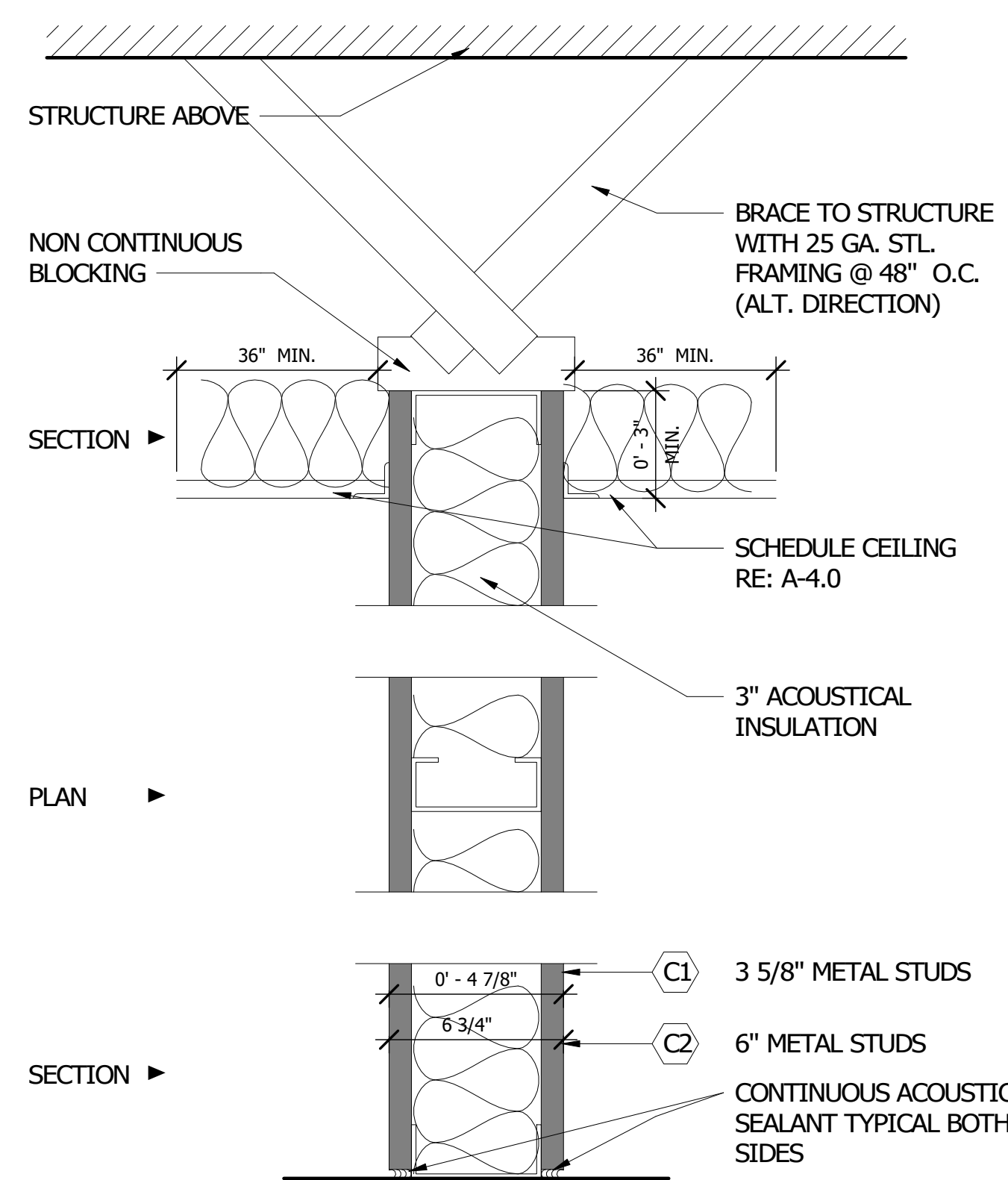
DOOR #	LOCATION		HAND	TYPE	DOOR			FRAME		HARDWARE		NOTES
	FROM	TO			FINISH	WIDTH	HEIGHT	TYPE	FINISH	SET	FINISH	
100	KITCHEN	E.O.C.	RH	2		3' - 0"	7' - 0"	B	HOLLOW METAL			
200	EXISTING CORRIDOR	CORRIDOR 200	LH	3	PLASTIC LAMINATE	3' - 0"	7' - 0"	B	HOLLOW METAL	01	628	KEY CARD ACCESS
201	CORRIDOR 200	OFFICE 201	RH	3	PLASTIC LAMINATE	3' - 0"	7' - 0"	B	HOLLOW METAL	01	628	KEY CARD ACCESS
202	CORRIDOR 200	OFFICE 202	LH	3	PLASTIC LAMINATE	3' - 0"	7' - 0"	B	HOLLOW METAL	01	628	KEY CARD ACCESS
203	CORRIDOR 200	OFFICE 203	RH	3	PLASTIC LAMINATE	3' - 0"	7' - 0"	B	HOLLOW METAL	01	628	KEY CARD ACCESS
204	CORRIDOR 200	OFFICE 204	RH	1	PLASTIC LAMINATE	3' - 0"	7' - 0"	B	HOLLOW METAL	01	628	KEY CARD ACCESS
205	CORRIDOR 200	OFFICE 205	RH	3	PLASTIC LAMINATE	3' - 0"	7' - 0"	B	HOLLOW METAL	01	628	KEY CARD ACCESS
206	CORRIDOR 200	OFFICE 206	RH	3	PLASTIC LAMINATE	3' - 0"	7' - 0"	B	HOLLOW METAL	01	628	KEY CARD ACCESS
207	CORRIDOR 200	OFFICE 207	LH	3	PLASTIC LAMINATE	3' - 0"	7' - 0"	B	HOLLOW METAL	01	628	KEY CARD ACCESS
208	CORRIDOR 200	OFFICE 208	LH	3	PLASTIC LAMINATE	3' - 0"	7' - 0"	B	HOLLOW METAL	01	628	KEY CARD ACCESS
209	SIM LAB 209	SIM VEST. 210	LH	2	PLASTIC LAMINATE	3' - 0"	7' - 0"	B	HOLLOW METAL		628	
210	SIM VESTIBULE 210	SIM LIVING 211	LH	1	PLASTIC LAMINATE	2' - 6"	7' - 0"	A	HOLLOW METAL	02	628	
211	SIM LIVING 211	SIM CLOSET 211A	LHR	1	PLASTIC LAMINATE	2' - 6"	7' - 0"	A	HOLLOW METAL	02	628	
212						0' - 0"	0' - 0"					GYP. BD. OPENING WITH CLEAR CORNER GUARDS
213	SIM KITCHEN 212	BREAKROOM 216	LH	2	PLASTIC LAMINATE	3' - 0"	7' - 0"	B	HOLLOW METAL	02	628	
214	SIM LIVING 211	SIM BEDROOM 213	LH	1	PLASTIC LAMINATE	2' - 6"	7' - 0"	A	HOLLOW METAL	02	628	
215	SIM BEDROOM 213	SIM BATH 215	RH	1	PLASTIC LAMINATE	2' - 6"	7' - 0"	A	HOLLOW METAL	02	628	
216	SIM BEDROOM 213	SIM HALL 214	RH	1	PLASTIC LAMINATE	2' - 6"	7' - 0"	A	HOLLOW METAL	02	628	
217	CORRIDOR 200	SIM HALL 214	LH	2		3' - 0"	7' - 0"	A		02	628	
218	CORRIDOR 200	EMS STORAGE 217	LH	2	PLASTIC LAMINATE	3' - 0"	7' - 0"	B	HOLLOW METAL	01	628	KEY CARD ACCESS
220	EXISTING CORRIDOR	WORK ROOM 215	LH	3	PLASTIC LAMINATE	3' - 0"	7' - 0"	B	HOLLOW METAL	01	628	KEY CARD ACCESS
221	WORK ROOM 218	STORAGE 219	RH	2	PLASTIC LAMINATE	3' - 0"	7' - 0"	B	HOLLOW METAL	03	628	
222	WORK ROOM 218	OFFICE 230	RH	3	PLASTIC LAMINATE	3' - 0"	7' - 0"	B	HOLLOW METAL	01	628	KEY CARD ACCESS
223	WORK ROOM 218	OFFICE 221	LH	3	PLASTIC LAMINATE	3' - 0"	7' - 0"	B	HOLLOW METAL	01	628	
224	WORK ROOM 218	OFFICE 222	RH	3	PLASTIC LAMINATE	3' - 0"	7' - 0"	B	HOLLOW METAL	01	628	
225	EXISTING CORRIDOR	WORKROOM 224	RH	3	PLASTIC LAMINATE	3' - 0"	7' - 0"	B	HOLLOW METAL	03	628	KEY CARD ACCESS
226	WORKROOM 224	OFFICE 225	LH	3	PLASTIC LAMINATE	3' - 0"	7' - 0"	B	HOLLOW METAL	03	628	KEY CARD ACCESS
227	WORKROOM 224	OFFICE 226	LH	3	PLASTIC LAMINATE	3' - 0"	7' - 0"	B	HOLLOW METAL	01	628	KEY CARD ACCESS
228	WORKROOM 224	OFFICE 227	LH	3	PLASTIC LAMINATE	3' - 0"	7' - 0"	B	HOLLOW METAL	01	628	
229	WORKROOM 224	LOGISTICS STORAGE 228	LH	2	PLASTIC LAMINATE	3' - 0"	7' - 0"	B	HOLLOW METAL	03	628	
231	HALL 229	SHOWER 231	LH	2	PLASTIC LAMINATE	3' - 0"	7' - 0"	B	HOLLOW METAL	04	628	OCCUPANCY INDICATOR
232						0' - 0"	0' - 0"					
232	HALL 229	SHOWER 231	LH	2	PLASTIC LAMINATE	3' - 0"	7' - 0"	B	HOLLOW METAL	04	628	OCCUPANCY INDICATOR
234	EXISTING CORRIDOR	EMS STORAGE 217	LH	2	PLASTIC LAMINATE	3' - 0"	7' - 0"	B	HOLLOW METAL		628	
235						0' - 0"	0' - 0"					



PARTITION TYPE B:
 25 GA. METAL STUDS @ 16" O.C.
 WITH ONE LAYER OF 5/8" GYPSUM BOARD EACH SIDE

PARTITION TYPE: B GENERAL SCALE : N.T.S.

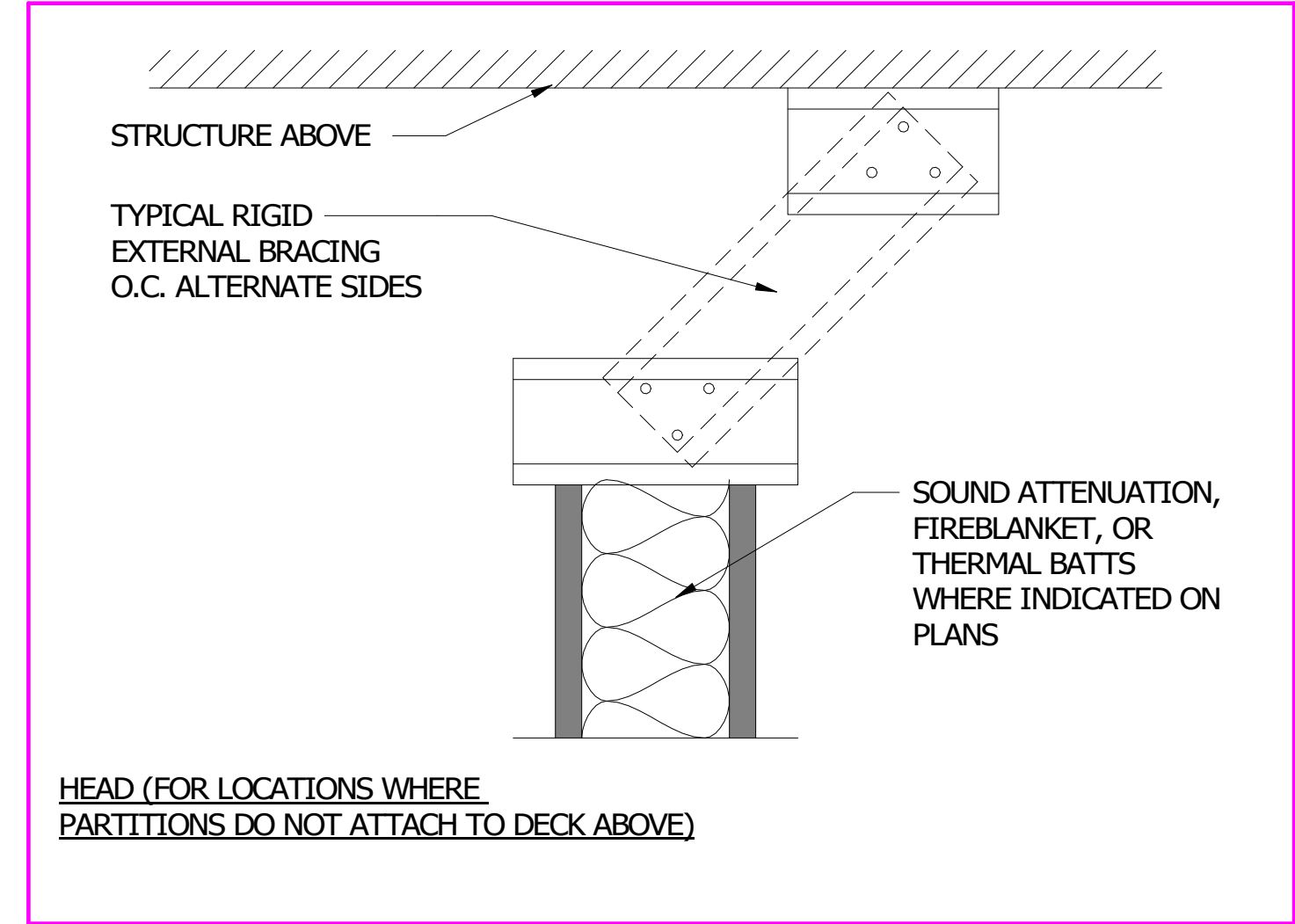
8 PARTITION B - MTL STUD
 3" = 1'-0"



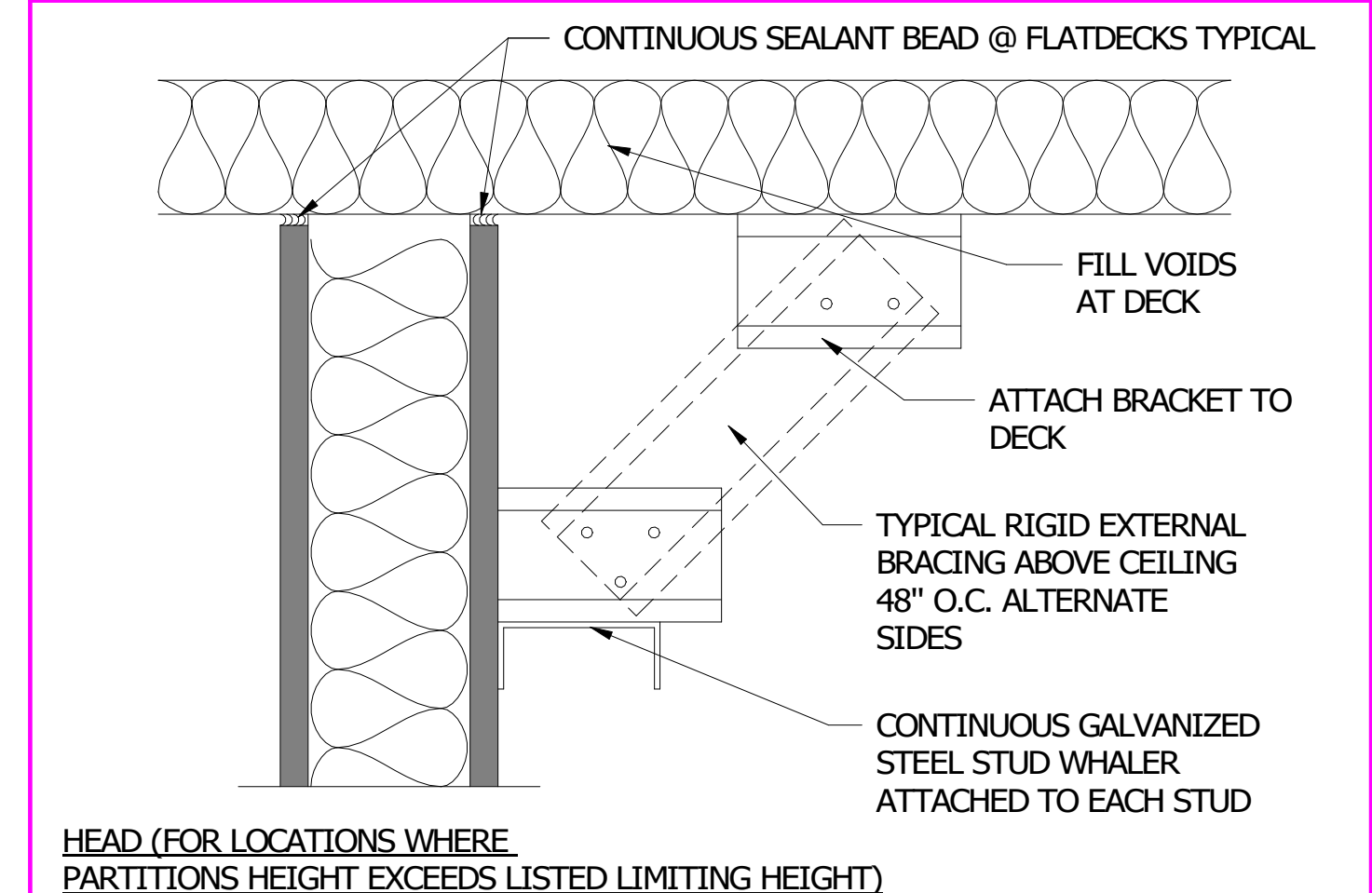
PARTITION TYPE C:
 25 GA. METAL STUDS @ 16" O.C.
 WITH ONE LAYER OF 5/8" GYPSUM BOARD EACH SIDE
 AND 3" FIBERGLASS ACOUSTICAL INSULATION FULL HEIGHT

PARTITION TYPE: C GENERAL SCALE : N.T.S.

7 PARTITION C - MTL STUD
 3" = 1'-0"



HEAD (FOR LOCATIONS WHERE PARTITIONS DO NOT ATTACH TO DECK ABOVE)



HEAD (FOR LOCATIONS WHERE PARTITIONS HEIGHT EXCEEDS LISTED LIMITING HEIGHT)

BRACE DETAIL GENERAL SCALE : N.T.S.

6 BRACE DETAIL - MTL STUD
 3" = 1'-0"



ARCHITECTURE | DESIGN | CONSTRUCTION

15810 PARK TEN PLACE, SUITE 300
 HOUSTON, TEXAS 77084
 713-665-4650
 www.sligroup.com



HARRIS COUNTY ESD 48
 ADMINISTRATION BUILDING RENOVATION
 21201 MORTON ROAD
 KATY, TEXAS 77449

Project Number : 8869

ISSUED FOR CLIENT APPROVAL	DATE
ISSUED FOR BIDDING	
ISSUED FOR PERMIT	
ISSUED FOR CONSTRUCTION	03/26/26

MARK	DESCRIPTION	DATE
A	ADDENDUM A	03/19/26

The information, ideas, designs, details, layouts, techniques, features, arrangements, plans, sequences, dimensions, allowances, tolerances, conceptions, specifications, intentions, technology or embodiments, as illustrated, arranged, displayed, noted, recorded, indicated, represented, disclosed, evidenced, detailed or otherwise related to tangible form hereby, either expressly, inherently or by implication, are the confidential and proprietary information of SLI Design, Inc., and shall not be used for any purpose other than the specific project or undertaking identified on the drawing title block or legend for which they are and have been prepared by SLI Design, Inc. Any other reproduction, disclosure or use of any portion of the confidential and proprietary information of SLI Design, Inc., shall be a breach of the obligation of confidence created by the acceptance of this drawing from SLI Design, Inc. for a specific project or Contract. Any copying, duplication, reproduction, utilization, alteration, modification, revision or change to this drawing, is expressly prohibited unless done with the prior written consent or approval of SLI Design, Inc., and shall not be undertaken without receipt of such prior written approval. This drawing is loaned by SLI Design, Inc., for the limited purpose of complying with a specific Contract. The drawing remains the property of SLI Design, Inc., and shall be returned upon request or completion of the contract, unless specifically authorized by Contract, under which it was loaned.

PRINT DATE: 3/26/2026 9:53:10 AM



03/26/26

DRAWING TITLE DOOR SCHEDULE	
DRAWN BY AM	SHEET NO.
CHECKED BY Checker	A-2.00
APPROVED BY Approver	