



ARCHITECTURE | DESIGN | CONSTRUCTION

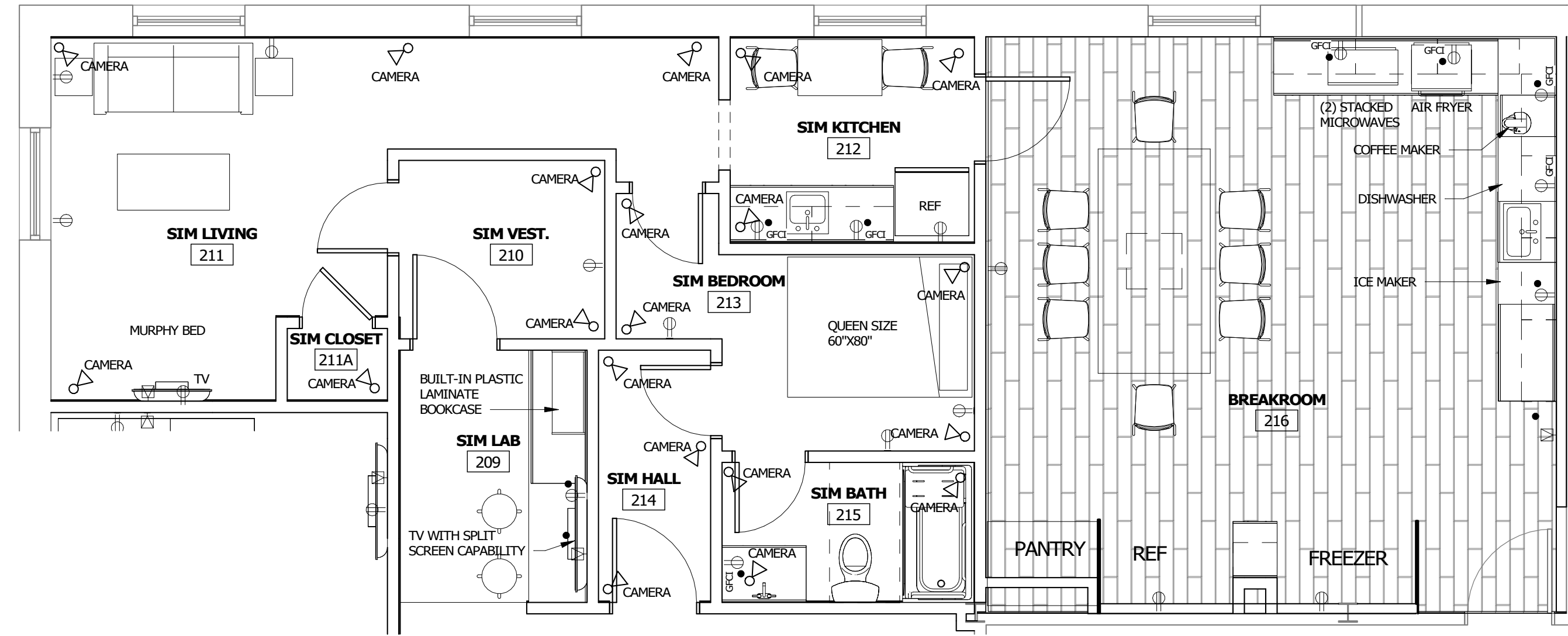
15810 PARK TEN PLACE, SUITE 300  
HOUSTON, TEXAS 77084  
713-465-4650  
www.sligroup.com

© COPYRIGHT

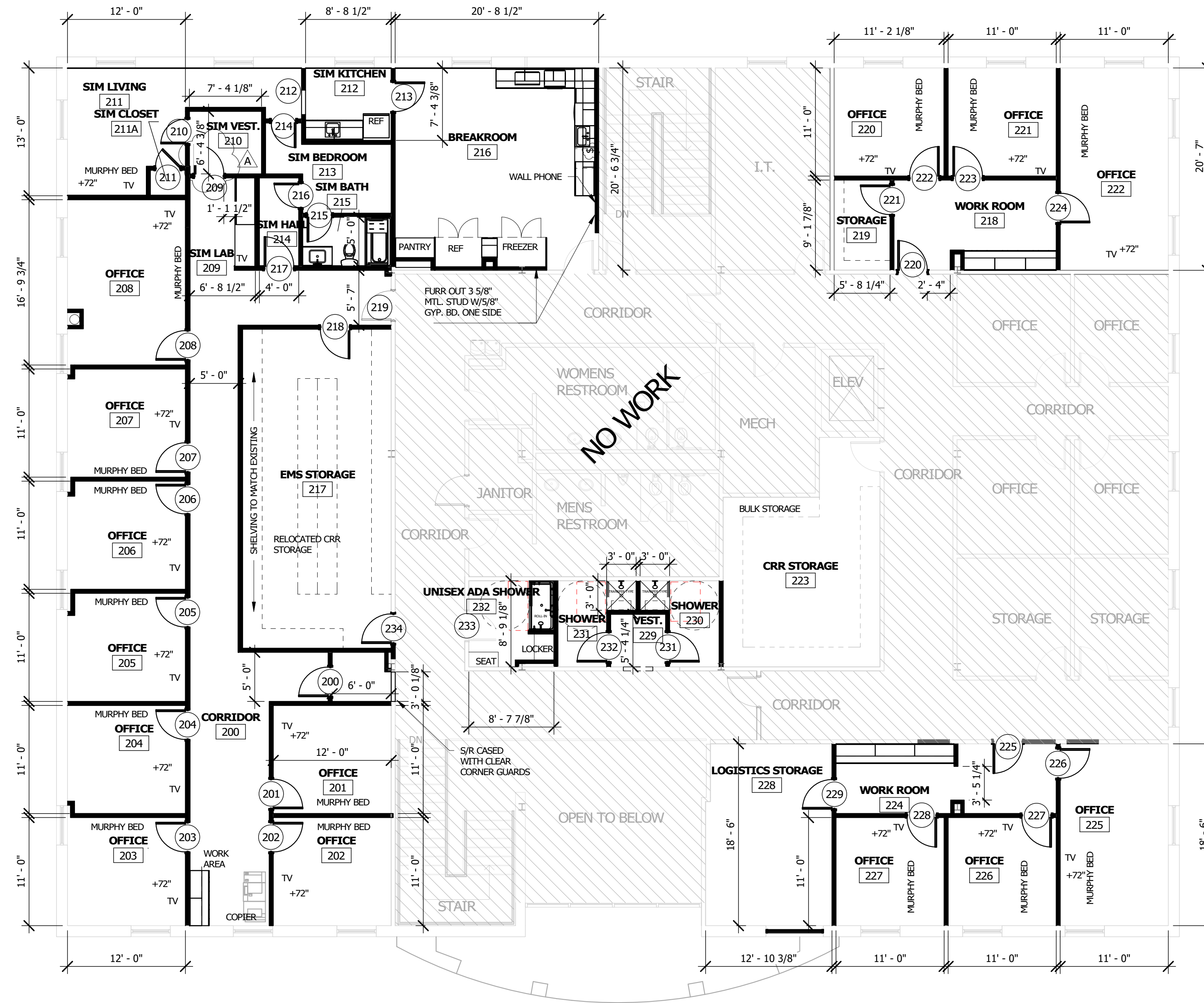


**HARRIS COUNTY ESD 48**  
ADMINISTRATION BUILDING RENOVATION  
21201 MORTON ROAD  
KATY, TEXAS 77449

Project Number : 8869



2 LEVEL 2 - SIMULATION APARTMENT (EXPANDED VIEW)  
1/4" = 1'-0"



1 LEVEL 2  
1/8" = 1'-0"

GENERAL NOTES:

1. PROVIDE FIBERGLASS REINFORCED PANEL (FRP) AT 4" A.F.F. THROUGHOUT THE SIMULATION SUITE.
2. PROVIDE BLOCKING AT ALL TV MOUNTING LOCATIONS.

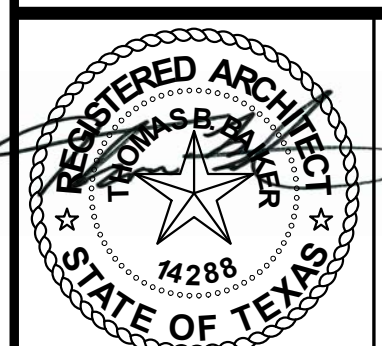
ISSUED FOR CLIENT APPROVAL	DATE
ISSUED FOR BIDDING	
ISSUED FOR PERMIT	
ISSUED FOR CONSTRUCTION	03/26/26

REVISIONS

MARK	DESCRIPTION	DATE
A	ADDENDUM A	03/19/26

The information, ideas, designs, details, layouts, techniques, features, arrangements, plans, sequences, dimensions, allowances, tolerances, concessions, specifications, intentions, technology or embodiments, as illustrated, arranged, displayed, noted, recorded, indicated, represented, disclosed, evidenced, detailed or otherwise related to tangible form hereby, either expressly, inherently or by implication, are the confidential and proprietary information of SLI Design, Inc., and shall not be used for any purpose other than the specific project or undertaking identified on the drawing title block or legend for which they are and have been prepared by SLI Design, Inc. Any other reproduction, disclosure or use of any portion of the confidential and proprietary information of SLI Design, Inc., shall be a breach of the obligation of confidence created by the acceptance of this drawing from SLI Design, Inc. for a specific project or Contract. Any copying, duplication, reproduction, utilization, alteration, modification, revision or change to this drawing, is expressly prohibited unless done with the prior written consent or approval of SLI Design, Inc., and shall not be undertaken without receipt of such prior written approval. This drawing is loaned by SLI Design, Inc., for the limited purpose of complying with a specific Contract. The drawing remains the property of SLI Design, Inc., and shall be returned upon request or completion of the contract, unless specifically authorized by Contract, under which it was loaned.

PRINT DATE: 3/26/2026 9:52:28 AM



03/26/26

DRAWING TITLE  
**FLOOR PLAN - LEVEL 2**

DRAWN BY AM SHEET NO.

CHECKED BY Checker

APPROVED BY Approver

**A-1.20**



NORTH