

# SYMBOL LEGEND

SWITCHES	
§	SWITCH, SPST, 20A, 120/277V
§ 3	SWITCH, 20A, 120/277V, "2" DENOTES THREE-WAY, "4" DENOTES FOUR-WAY
D	DIMMER CONTROL SWITCH, 1000 WATT UNLESS OTHERWISE NOTED
§ M	SWITCH, MOTION SENSOR, NOVITAS #01-133
§ OC	WALL MOUNTED OCCUPANT SENSOR WITH 0-10V DIMMER. PROVIDE ENOUGH SENSORS/CEILING OR WALL MOUNTED) FOR FULL ROOM COVERAGE. CONNECT LIGHT FIXTURES SERVING ROOM THROUGH NEW SENSOR(S). LIGHTS MUST BE TURNED ON MANUALLY (OR OPTIONALLY CAN BE CONFIGURED TO COME ON AUTOMATICALLY TO 50%). EATON #VSW-P-010
H/S	HASH MARKS INDICATE NUMBER OF CONDUCTORS PHASE/NEUTRAL/SWITCH LEG/GROUND FROM LEFT TO RIGHT. NO HASH MARKS INDICATES #12, #112G, UNLESS OTHERWISE NOTED.
—	UNDERGROUND CONDUIT
RECEPTACLES AND OUTLETS	
⊕	DUPLEX WALL RECEPTACLE, NEMA 5-15R, 15A, 125V OR NEMA 5-20R, 20A, 125V, RE: SPECIFICATIONS, DOT INDICATES ABOVE COUNTER.
WP	DUPLEX WALL RECEPTACLE "WP" DENOTES WEATHERPROOF, "TP" DENOTES SAFETY TYPE, "GF" DENOTES GROUND FAULT PROTECTION, DOT INDICATES ABOVE COUNTER.
⊕	FOURPLEX WALL RECEPTACLE, NEMA 5-15R, 15A, 125V, DOT INDICATES ABOVE COUNTER.
⊕	SPECIAL RECEPTACLE, NEMA CONFIGURATION AS NOTED, DOT INDICATES ABOVE COUNTER.
⊕	FLOOR OUTLET
⊕	JUNCTION BOX
⊕	DIRECT CONNECTION TO EQUIPMENT
▲	TELEPHONE WALL OUTLET, PROVIDE 2"x4" OUTLET BOX WITH 3/4" CONDUIT AND PULL STRING TO ABOVE CEILING.
▲	DATA WALL OUTLET, PROVIDE 2"x4" OUTLET BOX WITH 3/4" CONDUIT AND PULL STRING TO ABOVE CEILING.
⊕	COMBINATION RECEPTACLE/TELEPHONE/DATA FLOOR OUTLET
⊕	HUBBELL #B4333 FLOOR BOX HUBBELL 1 - #S3825 AND 2 - #S3825 COVER HUBBELL, #S93085 CARPET FLANGE
⊕	HUBBELL #B4233 FLOOR BOX HUBBELL 1 - #S3825 COVER AND 1 - #S3825 COVER HUBBELL, #S93084 CARPET FLANGE
⊕	HUBBELL #B2436 FLOOR BOX HUBBELL #S3825 COVER HUBBELL, #S93083 CARPET FLANGE
⊕	CATV, PROVIDE 2"x4" OUTLET BOX WITH 3/4" CONDUIT AND PULL STRING TO ABOVE CEILING.
ELECTRICAL EQUIPMENT	
—	DISTRIBUTION PANEL
—	PLYWOOD TERMINAL BOARD, TYPE AS NOTED, 4" X 8" X 3/4", UNLESS NOTED OTHERWISE
T	TRANSFORMER
MOTORS AND CONTROLS	
⊕	SINGLE OR THREE PHASE MOTOR
⊕	DISCONNECT (SAFETY) SWITCH "200/3/150" DENOTES AMPERES/POLE/FUSE, "NF" DENOTES NON-FUSED
⊕	MOTOR STARTER
⊕	COMBINATION DISCONNECT (SAFETY) SWITCH AND MOTOR STARTER "30/3/150H" DENOTES AMPERES/POLES/FUSE/STARTER SIZE, "NF" DENOTES NON-FUSED.
⊕ m	MANUAL MOTOR STARTING WITH THERMAL OVERLOAD
FIRE ALARM	
FACP	FIRE ALARM CONTROL PANEL (FLUSH/SURFACE)
⊕	CEILING SPEAKER/STROBE
⊕	WALL SPEAKER/STROBE
⊕	CEILING STROBE
⊕	WALL STROBE
⊕	SPEAKER
⊕	MANUAL PULL STATION
⊕	AREA SMOKE DETECTOR, "H" HEAT DETECTOR, "DD" DUCT DETECTOR.
⊕	SPRINKLER FLOW SWITCH
⊕	VALVE SUPERVISORY SWITCH
NL	NIGHT LIGHT

## BRANCH PANEL: MDP

LOCATION:  
SUPPLY FROM:  
MOUNTING: SURFACE  
ENCLOSURE: Type 1

## EXISTING

VOLTS: 120/208 Wye  
PHASES: 3  
WIRES: 4

A.I.C. RATING:  
MAINS TYPE: MLO  
MAINS RATING: 800 A  
MCB RATING:

### NOTES:

CKT	CIRCUIT DESCRIPTION	WIRE	TRIP	POLES	A	B	C	POLES	TRIP	WIRE	CIRCUIT DESCRIPTION	CKT
1	EXISTING PANEL LA	--	225 A	3	12.4...	18.1 kVA					EXISTING RTU-1A	2
3	--	--	--	--		12.4 kVA	18.1 kVA				EXISTING RTU-1A	4
5	--	--	--	--							EXISTING RTU-2A	6
7	EXISTING PANEL LA1	--	225 A	3	22.0...	13.1 kVA					EXISTING RTU-2A	8
9	--	--	--	--		22.0 kVA	13.1 kVA				EXISTING RTU-2A	10
11	--	--	--	--							SPACE	12
13	EXISTING 2LA	--	225 A	3	15.4...						SPACE	14
15	--	--	--	--		16.3 kVA					SPACE	16
17	--	--	--	--			17.4 kVA				SPACE	18
19	EXISTING ELEVATOR	--	90 A	3	6.5 kVA						SPACE	20
21	--	--	--	--		6.5 kVA					SPACE	22
23	--	--	--	--			6.5 kVA				SPACE	24
25	SPACE	--	--	1	0.0 kVA					30 A	EXISTING SPD	26
27	SPACE	--	--	1	0.0 kVA		0.0 kVA			--	--	28
29	SPACE	--	--	1	0.0 kVA		0.0 kVA			--	--	30
<b>TOTAL LOAD:</b>					87402 VA	86291 VA	89434 VA					
<b>TOTAL AMPS:</b>					728 A	737 A	746 A					

### LEGEND:

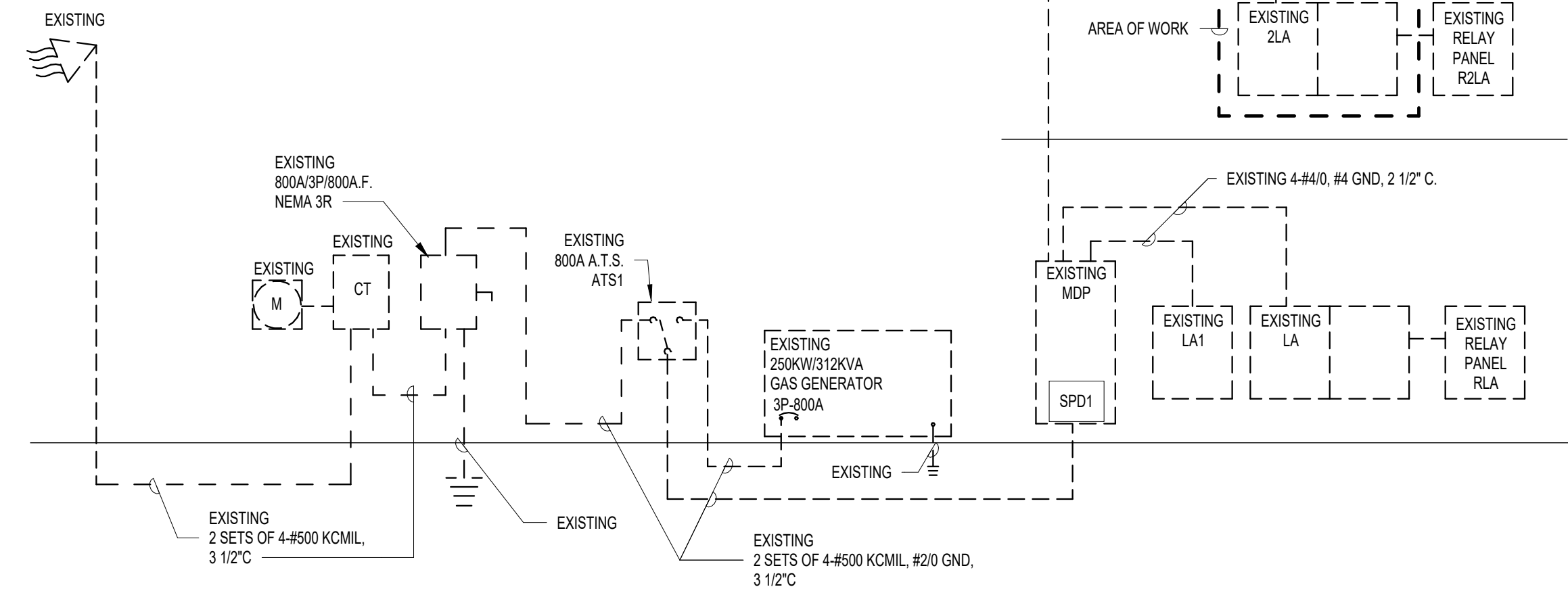
LOAD CLASSIFICATION	CONNECTED LOAD	DEMAND FACTOR	ESTIMATED DEMAND	PANEL TOTALS
HVAC	5616 VA	100.00%	5616 VA	
Lighting	3471 VA	125.00%	4339 VA	<b>TOTAL CONN. LOAD:</b> 265127 VA
Power	243080 VA	100.00%	243080 VA	<b>TOTAL EST. DEMAND:</b> 264695 VA
Receptacle	12600 VA	89.68%	11300 VA	<b>TOTAL CONN.:</b> 736 A
M	360 VA	100.00%	360 VA	<b>TOTAL EST. DEMAND:</b> 735 A

### NOTES:

NEW ADDED LOAD DOES NOT EXCEED PANEL CAPACITY OF 800A

## LIGHTING FIXTURE SCHEDULE

MARK	DESCRIPTION	MOUNTING	LAMPS/WATTS	TYPE	VOLTS	REMARKS
A1	2X4 FLAT PANEL	RECESSED	48.5	LED	UNV	
B	2X2 FLAT PANEL	RECESSED	21.3	LED	UNV	
C	RECESSED CAN	RECESSED	19.5	LED	UNV	
C2	SURFACE FIXTURE	SURFACE	14.5	LED	UNV	
E	SURFACE 1X4	SURFACE	60	LED	UNV	
R	VANITY FIXTURE	SURFACE	60	LED	UNV	
X	EXIT LIGHT	SURFACE	2.5	LED	UNV	



## ELECTRICAL ONE LINE DIAGRAM

1 N.T.S.

## BRANCH PANEL: 2LA

LOCATION:  
SUPPLY FROM: MDP  
MOUNTING: SURFACE  
ENCLOSURE: Type 1

## EXISTING

VOLTS: 120/208 Wye  
PHASES: 3  
WIRES: 4

A.I.C. RATING:  
MAINS TYPE: MLO  
MAINS RATING: 225 A  
MCB RATING:

### NOTES:

CKT	CIRCUIT DESCRIPTION	WIRE	TRIP	POLES	A	B	C	POLES	TRIP	WIRE	CIRCUIT DESCRIPTION	CKT		
1	EXISTING EXIT SIGNS	--	20 A	1	0.2 kVA	0.6 kVA				1	20 A	EXISTING EDF	2	
3	EXISTING CORRIDOR LTG	--	20 A	1		1.1 kVA	0.5 kVA				1	20 A	EXISTING RCPT	4
5	EXISTING CORE LTG	--	20 A	1			1.1 kVA	0.5 kVA			1	20 A	EXISTING RCPT	6
7	EXISTING STAIR LTG	--	20 A	1	0.7 kVA	0.7 kVA					1	20 A	EXISTING RCPT	8
9	NEW RECEPTACLES 226/230	#12	20 A	1		0.4 kVA	0.2 kVA				1	20 A	EXISTING RCPT	10
11	NEW RECEPTACLES 201/202	#10	20 A	1			0.7 kVA	0.5 kVA			1	20 A	EXISTING CAB LTS	12
13	NEW RECEPTACLES 203/204	#10	20 A	1	0.7 kVA	0.2 kVA					1	20 A	EXISTING RCPT	14
15	NEW RECEPTACLES 205/206	#10	20 A	1		0.7 kVA	0.4 kVA				1	20 A	NEW RECEPTACLES 207	16
17	NEW RECEPTACLES 208	#10	20 A	1			0.5 kVA	0.2 kVA			1	20 A	NEW RECEPTACLES 214	18
19	NEW RECEPTACLES 209/210	#10	20 A	1	0.4 kVA	0.7 kVA					1	20 A	NEW RECEPTACLES 211	20
21	NEW RECEPTACLES 213	#12	20 A	1		0.2 kVA	0.2 kVA				1	20 A	NEW REFRIGERATOR	22
23	NEW RECEPTACLES 214 REFRIGERATOR	#12	20 A	1			0.2 kVA	0.2 kVA			1	20 A	NEW RECEPTACLES 214	24
25	NEW RECEPTACLES 214	#12	20 A	1	0.2 kVA	0.4 kVA					1	20 A	NEW RECEPTACLES 214	26
27	NEW RECEPTACLES 217/218	#12	20 A	1		0.7 kVA	0.7 kVA				1	20 A	NEW RECEPTACLES 219	28
29	NEW RECEPTACLES 217	#12	20 A	1			0.4 kVA	0.4 kVA			1	20 A	NEW RECEPTACLES 219/220	30
31	NEW RECEPTACLES 210/211	#12	20 A	1	0.5 kVA	0.2 kVA					1	20 A	NEW PRINTER	32
33	NEW RECEPTACLES 201/202	#10	20 A	1		0.4 kVA	0.5 kVA				1	20 A	NEW RECEPTACLE 203/204	34
35	NEW RECEPTACLES 205/206/207	#10	20 A	1			0.5 kVA	0.2 kVA			1	20 A	NEW RECEPTACLE 212	36
37	NEW RECEPTACLE 216	#12	20 A	1	0.2 kVA	0.2 kVA					1	20 A	NEW RECEPTACLE 200	38
39	NEW LIGHTING	#10	20 A	1		1.0 kVA	0.2 kVA				1	20 A	NEW RECEPTACLES 215	40
41	NEW LIGHTING	#10	20 A	1			1.2 kVA	1.3 kVA			1	20 A	NEW LIGHTING	42
43	EXISTING FPT-2.1A	--	30 A	3	2.1 kVA	1.4 kVA					2	20 A	EXISTING CU-1A	44
45	--	--	--	--		2.1 kVA	1.4 kVA				--	--	EXISTING EF-1A	46
47	--	--	--	--			2.1 kVA	1.2 kVA			1	20 A	EXISTING EF-1A	48
49	EXISTING FPT-2.2A	--	45 A	3	3.5 kVA						1	--	SPACE	50
51	--	--	--	--			3.5 kVA				1	--	SPACE	52
53	--	--	--	--			3.5 kVA	0.6 kVA			2	20 A	NEW FPT-2.5A	54
55	NEW FPT-2.6A	#12	20 A	2	0.6 kVA	0.6 kVA					--	--	NEW FPT-2.8A	56
57	--	--	--	--		0.6 kVA	0.6 kVA				2	20 A	NEW FPT-2.8A	58
59	NEW FPT-2.7A	#12	20 A	2			0.6 kVA	0.6 kVA			--	--	NEW FPT-2.9A	60
61	--	--	--	--		0.6 kVA	0.6 kVA				2	20 A	NEW FPT-2.9A	62
63	NEW RECEPTACLES 229	#12	20 A	1		0.5 kVA	0.6 kVA				--	--	NEW RECEPTACLES 227	64
65	NEW RECEPTACLES 228	#12	20 A	1			0.5 kVA	0.5 kVA			1	20 A	NEW RECEPTACLES 227	66
67	QUAD RECEPTACLES 228	#12	20 A	1	0.4 kVA						1	--	SPACE	68
69	SPACE	--	1	--							1	--	SPACE	70
71	SPACE	--	1	--							1	--	SPACE	72
73	SPACE	--	1	--							1	--	SPACE	74
75	SPACE	--	1	--							1	--	SPACE	76
77	SPACE	--	1	--							1	--	SPACE	78
79	SPACE	--	1	--							1	--	SPACE	80
81	SPACE	--	1	--							1	--	SPACE	82
83	SPACE	--	1	--							1	--	SPACE	84
<b>TOTAL LOAD:</b>					15375 VA	16264 VA	17407 VA							
<b>TOTAL AMPS:</b>					128 A	137 A	146 A							

### LEGEND:

LOAD CLASSIFICATION	CONNECTED LOAD	DEMAND FACTOR	ESTIMATED DEMAND	PANEL TOTALS
HVAC	5616 VA	100.00%	5616 VA	
Lighting	3471 VA	125.00%	4339 VA	<b>TOTAL CONN. LOAD:</b> 49046 VA
Power	26999 VA	100.00%	26999 VA	<b>TOTAL EST. DEMAND:</b> 48614 VA
Receptacle	12600 VA	89.68%	11300 VA	<b>TOTAL CONN.:</b> 136 A
M	360 VA	100.00%	360 VA	<b>TOTAL EST. DEMAND:</b> 135 A

### NOTES:

NEW ADDED LOAD DOES NOT EXCEED PANEL CAPACITY OF 225A



ARCHITECTURE | DESIGN | CONSTRUCTION

15810 PARK TEN PLACE, SUITE 300  
HOUSTON, TEXAS 77064  
713-465-4650  
www.sligroup.com



HARRIS COUNTY ESD 48  
ADMINISTRATION BUILDING RENOVATION  
21201 MORTON ROAD  
KATY, TEXAS 77449

Project Number: 8869

ISSUED FOR CLIENT APPROVAL

ISSUED FOR BIDDING

ISSUED FOR PERMIT

ISSUED FOR CONSTRUCTION

REVISIONS

MARK	DESCRIPTION	DATE