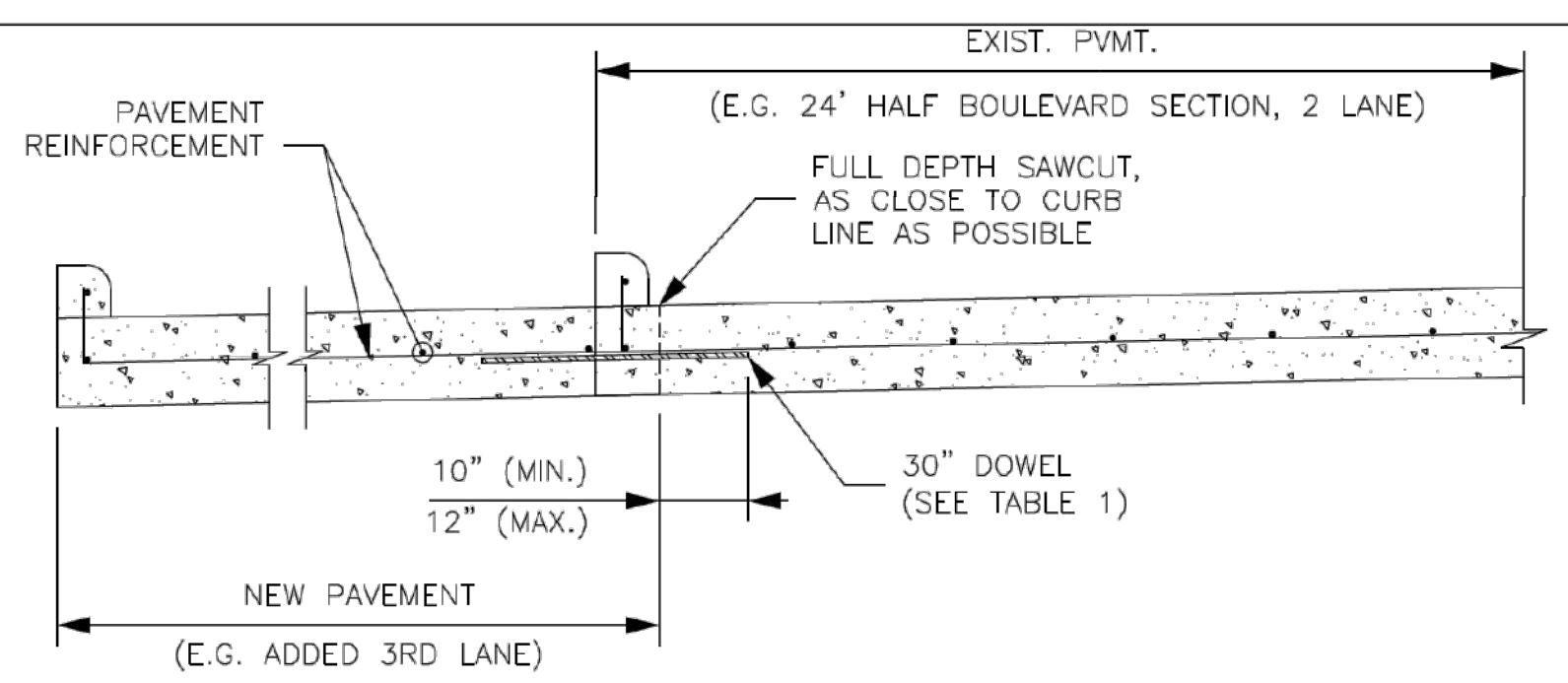


J:\1704\1601\Fort Bend County Standards\Fort Bend County STD\DONE\FBC CONCRETE PAVEMENT DETAILS\CONCRETE_PAVEMENT_DETAILS-1of2.dwg



TYPICAL CONCRETE ROADWAY WIDENING DETAIL
SCALE: 1" = 1'-6"

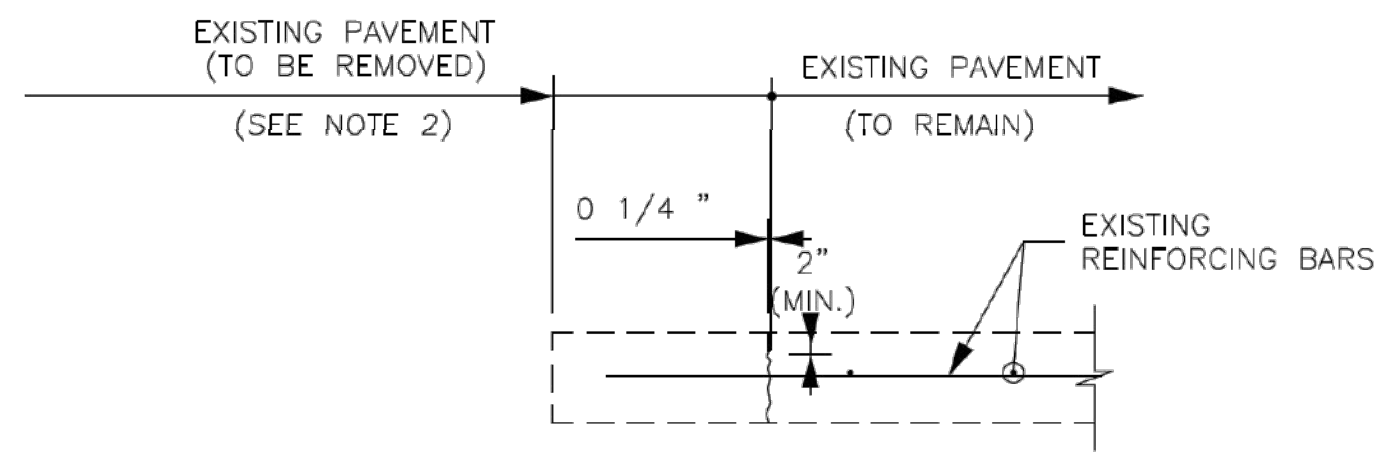
**TABLE 1
(CONSTRUCTION JOINT DOWELS)**

DOWEL SIZE	PAVEMENT DEPTH
#4 BAR	< 6"
#5 BAR	6" ≤ D < 9"
#6 BAR	≥ 9"

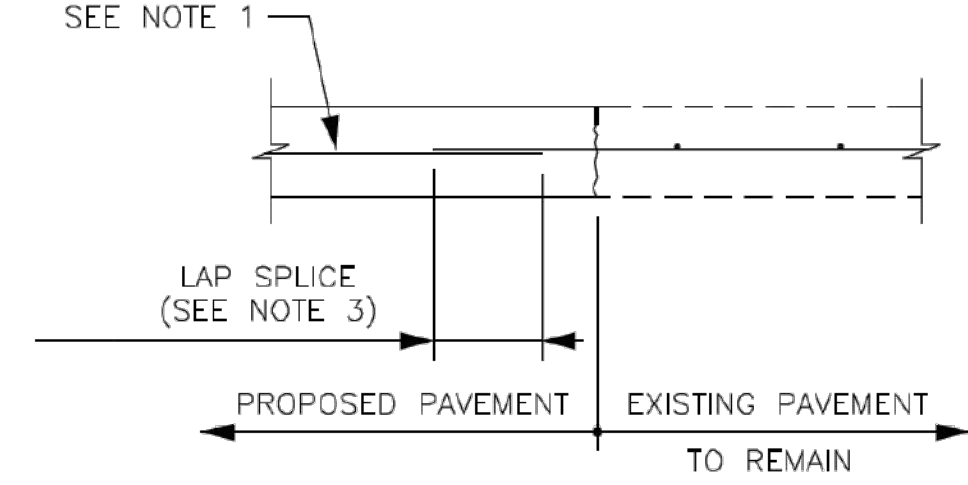
DOWEL SHALL BE DRILLED INTO EXISTING PAVEMENT (MIN. 10", MAX. 12") AND EPOXIED. (SEE HC ITEM 361.3)

EXPANSION JOINT DOWELS 12" O.C.

PAVEMENT THICKNESS (D)	DOWEL DIA.
6"	3/4"
7"	1"
8"	1"
9" & 10"	1 1/4"



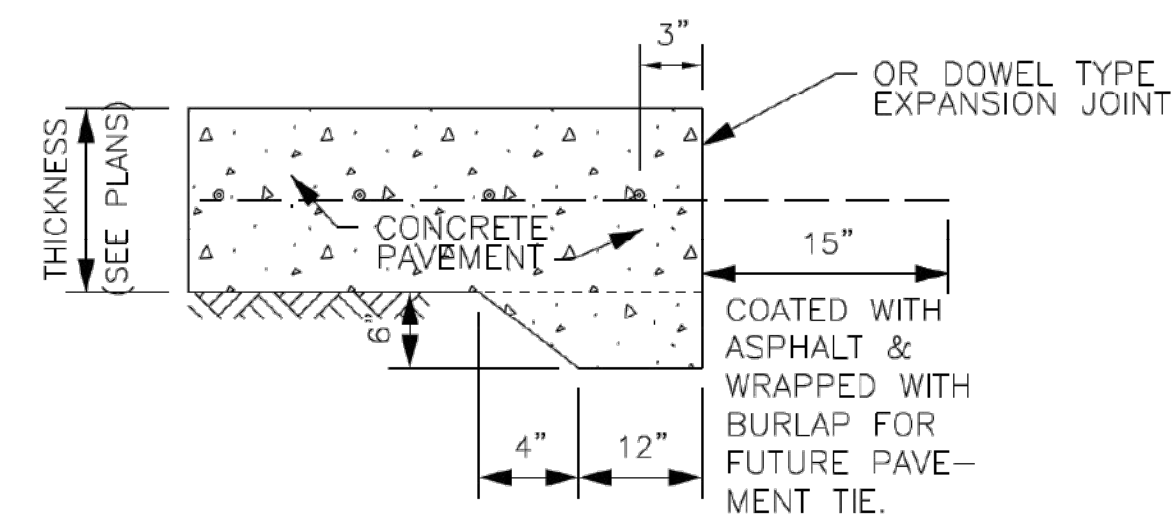
STEP 1 DEMOLITION OF EXISTING PAVEMENT



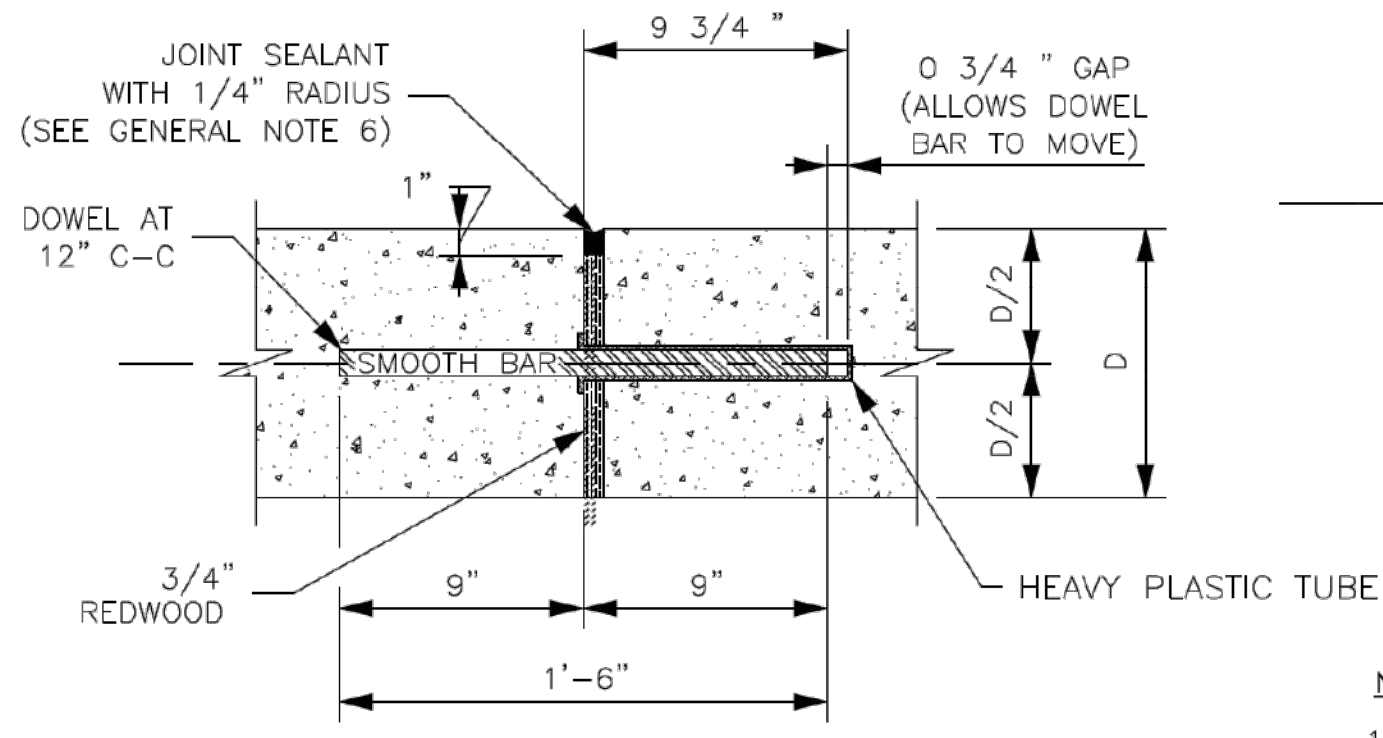
STEP 2 CONSTRUCTION OF NEW PAVEMENT

CONCRETE TO CONCRETE STANDARD PAVEMENT TIE-IN
SCALE: 1" = 1'-6"

- NOTES FOR STANDARD PAVEMENT TIE-IN:**
1. REINFORCING CENTERED IN PROPOSED PAVEMENT, 3" CLEAR AT EDGES.
 2. ONLY FULL DEPTH SAWCUTS WILL BE ALLOWED
 3. USE FULL DEPTH SAWCUT WITH DRILLED IN DOWELS (AS SHOWN IN THE "TYPICAL CONCRETE ROADWAY WIDENING DETAIL" ON THIS SHEET. THE SAWCUTTING AND DOWELS WILL BE AT CONTRACTOR'S EXPENSE.
 4. ALL PAVEMENT CONCRETE SHALL BE 5 1/2 SACK PER CY, 3500, PSI AT 28 DAYS
 5. SIZE OF DOWEL BARS SHALL CONFORM TO TABLE 1. DOWELS SHALL BE PLACED 24" CENTER TO CENTER OR MATCH EXISTING, IF CLOSER

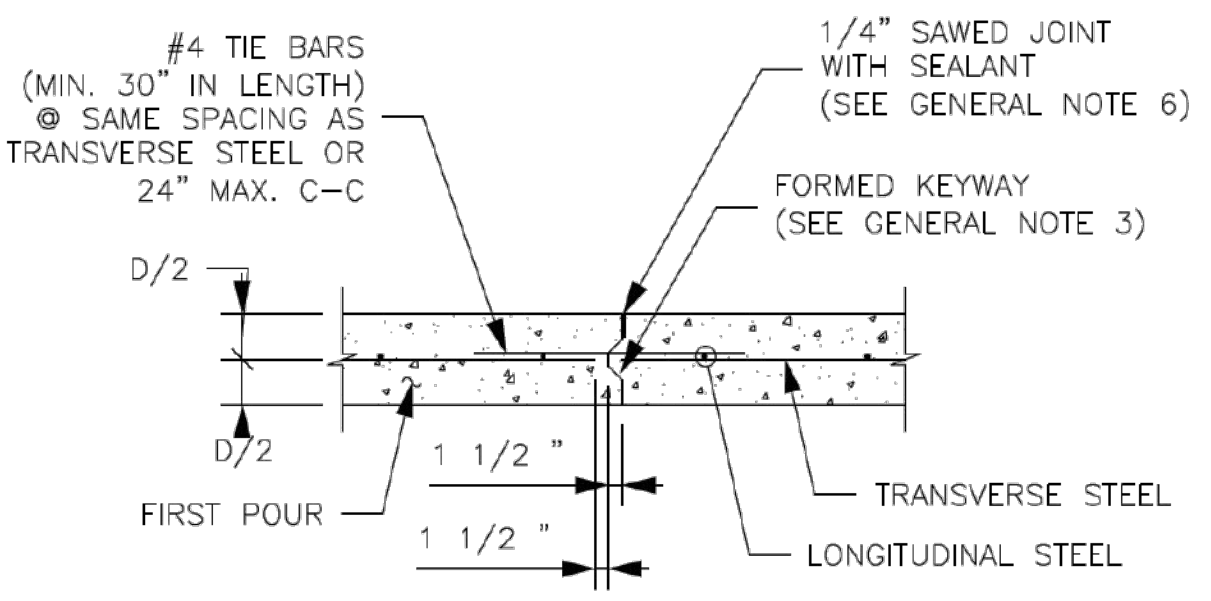


PAVEMENT HEADER
REQUIRES FBC APPROVAL

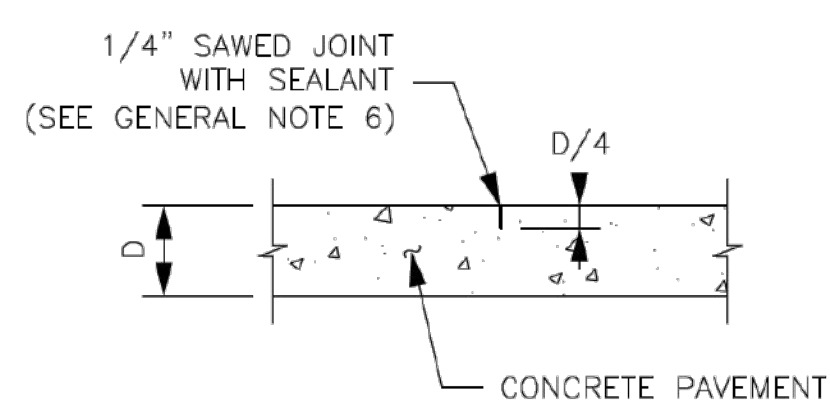


DOWEL TYPE EXPANSION JOINT
SCALE: 1" = 6"

- NOTES FOR DOWEL EXPANSION JOINT:**
1. EXPANSION JOINT SHALL BE PLACED AT THE END OF EACH CURB RADIUS AND SPACED AT A MAXIMUM DISTANCE OF 60 FEET.
 2. CENTER DOWEL HORIZONTALLY ON JOINT.
 3. EXPANSION JOINT BARS SHALL BE HELD PARALLEL TO THE FINISHED CONCRETE SURFACE.

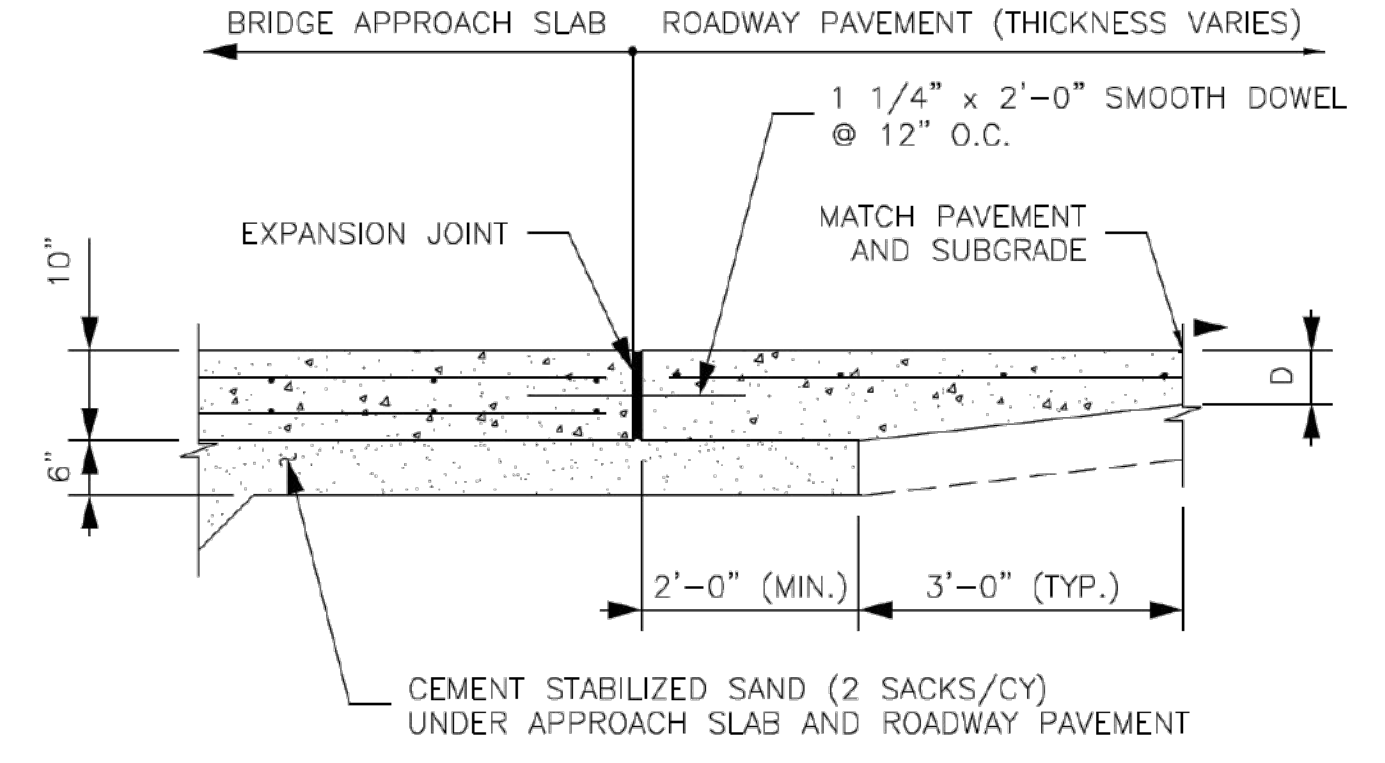


LONGITUDINAL CONSTRUCTION JOINT
SCALE: 1" = 1'-6"

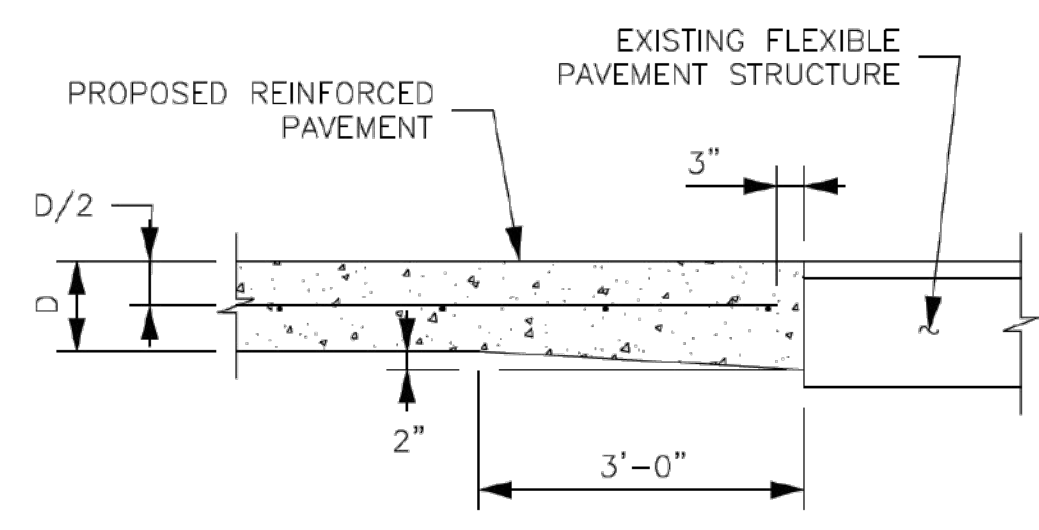


CONTRACTION JOINT (SAWED)
SCALE: 1" = 1'-6"

- NOTE FOR CONTRACTION JOINT:**
1. 20'-0" MAXIMUM SPACING BETWEEN JOINTS.



TYPICAL SECTION PAVING TIE-IN TO BRIDGE APPROACH SLAB
SCALE: 1" = 1'-6"



TYPICAL PAVING HEADER
SCALE: 1" = 1'-6"

- NOTES FOR PAVING HEADER:**
1. ADDITIONAL CONCRETE FOR PAVING HEADER SHALL BE CONSIDERED INCIDENTAL TO VARIOUS PAVING BID ITEMS.
 2. DISTURBED MATERIAL IN THE FLEXIBLE PAVEMENT WILL BE BACKFILLED WITH ASPHALT CONCRETE PAVEMENT (ACP). THE ACP WILL BE CONSIDERED INCIDENTAL TO VARIOUS PAVING BID ITEMS.

- GENERAL NOTES:**
1. FOR FURTHER INFORMATION REGARDING THE PLACEMENT OF CONCRETE AND REINFORCING, REFER TO HC ITEM 360 HARRIS COUNTY SPECIFICATIONS
 2. THE CHAIRS USED TO SUPPORT THE BAR MATS SHALL BE OF SUFFICIENT STRUCTURAL QUALITY AND NUMBER TO HOLD THE MAT WITHIN THE PLACEMENT HEIGHT, AND SHALL BE OF A TYPE APPROVED BY THE ENGINEER. SPACING OF BAR SUPPORT CHAIRS SHALL BE 3'-0" MAXIMUM.
 3. SAWED CONTRACTION JOINTS SHALL BE USED FOR LONGITUDINAL JOINTS WHEREVER MORE THAN ONE LANE WIDTH IS PLACED IN A SINGLE POUR. KEYED CONTRACTION JOINTS SHALL BE USED AT ALL OTHER JOINTS.
 4. ALL SAW CUTTING SHOWN ON THIS DETAIL SHALL BE INCIDENTAL TO HC ITEM 360 "CONCRETE PAVEMENT".
 - FOR DEVELOPMENT PROJECTS SEE REGULATIONS OF FORT BEND COUNTY, TEXAS FOR THE APPROVAL AND ACCEPTANCE OF INFRASTRUCTURE.
 5. D = THICKNESS OF CONCRETE PAVEMENT.
 6. ALL CONSTRUCTION JOINTS SHALL BE SEALED. JOINT SEALANT SHALL CONFORM TO THE REQUIREMENTS OF HC ITEM 360
 7. NO TRAFFIC ON CONCRETE PAVEMENT UNTIL 7 DAYS CURE TIME AND 3,500 PSI HAS BEEN REACHED.
 8. MEMBRANE CURING HC ITEM 802.

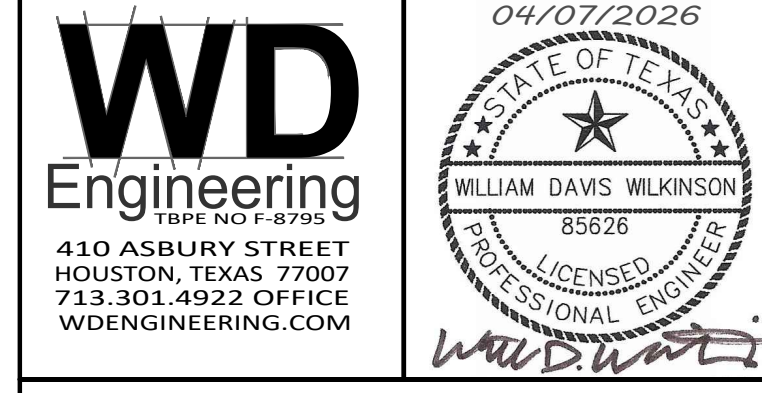
NO.	REVISIONS	DATE	NAME
1	ORIGINAL STANDARD ISSUED	3-1-22	RJS
2	REMOVED UNDERCUT DETAIL, ADDED NOTE 8	10-1-24	RJS

FORT BEND COUNTY
ENGINEERING DEPARTMENT



PROJECT TITLE:		FBCED STANDARD
DRAWN BY: INIT	SHEET DESCRIPTION: CONCRETE PAVEMENT DETAILS	05
CK'D BY: INIT		SHEET NO:
SCALE: AS NOTED	SHEET 1 OF 3	/
DATE: 10-1-24	APPROVED BY:	

ISSUE FOR BID 04/07/2026



Shell Federal Credit Union
Katy Fulshear
26620 FM 1093
Katy, Texas 77494

FORT BEND
CONCRETE
PAVEMENT DETAILS
C1.08

THESE DETAILS SUPERCEDE
OTHER DETAILS

FBC Engineering Approval