



ARCHITECTURE PLANNING INTERIOR DESIGN  
 15810 PARK TEN PLACE, SUITE 300  
 HOUSTON, TEXAS 77084  
 713-465-4650  
 www.sligroup.com

**Shell Federal**  
**CREDIT UNION**  
 26620 FM 1093 Rd  
 Katy, TX 77494

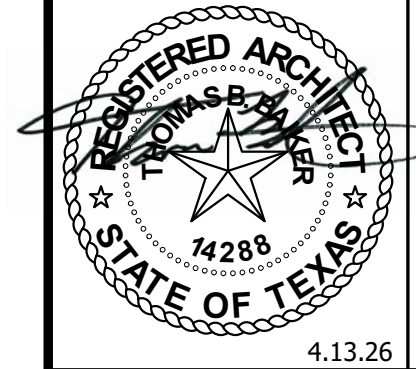
Project Number : 8972

	DATE
ISSUED FOR CLIENT APPROVAL	1/26/26
ISSUED FOR BIDDING	4/13/2026
ISSUED FOR PERMIT	4/13/2026
ISSUED FOR CONSTRUCTION	

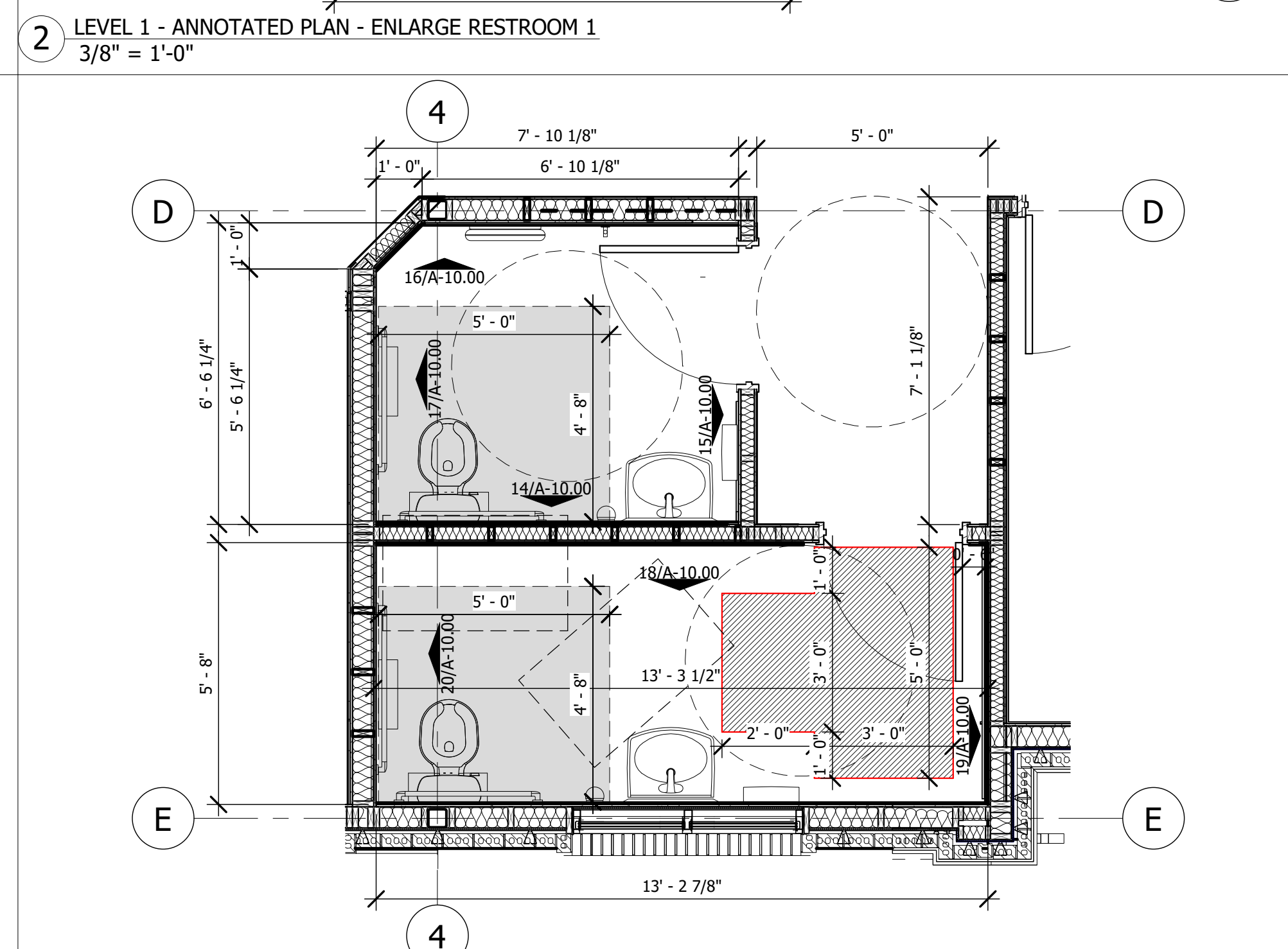
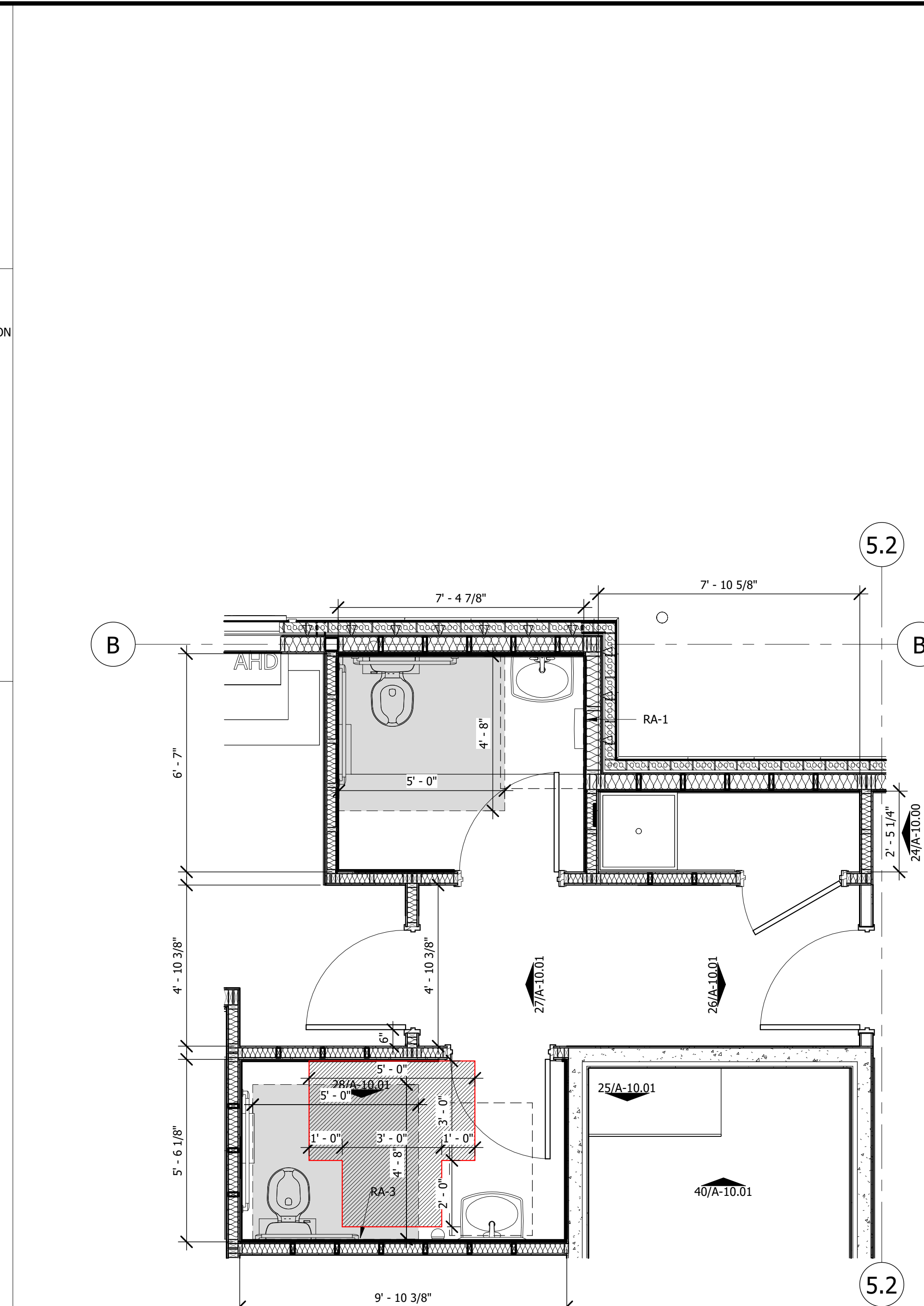
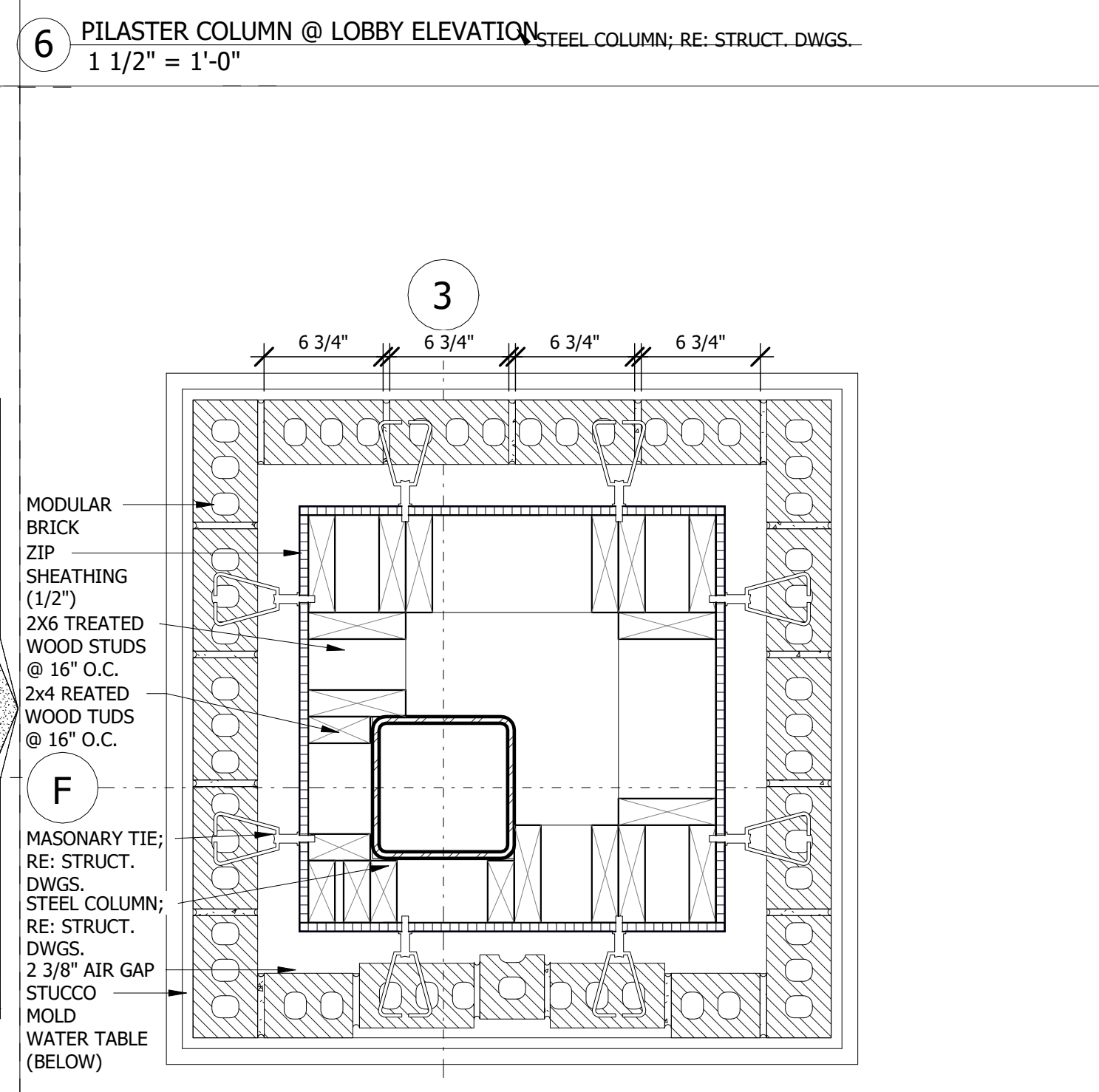
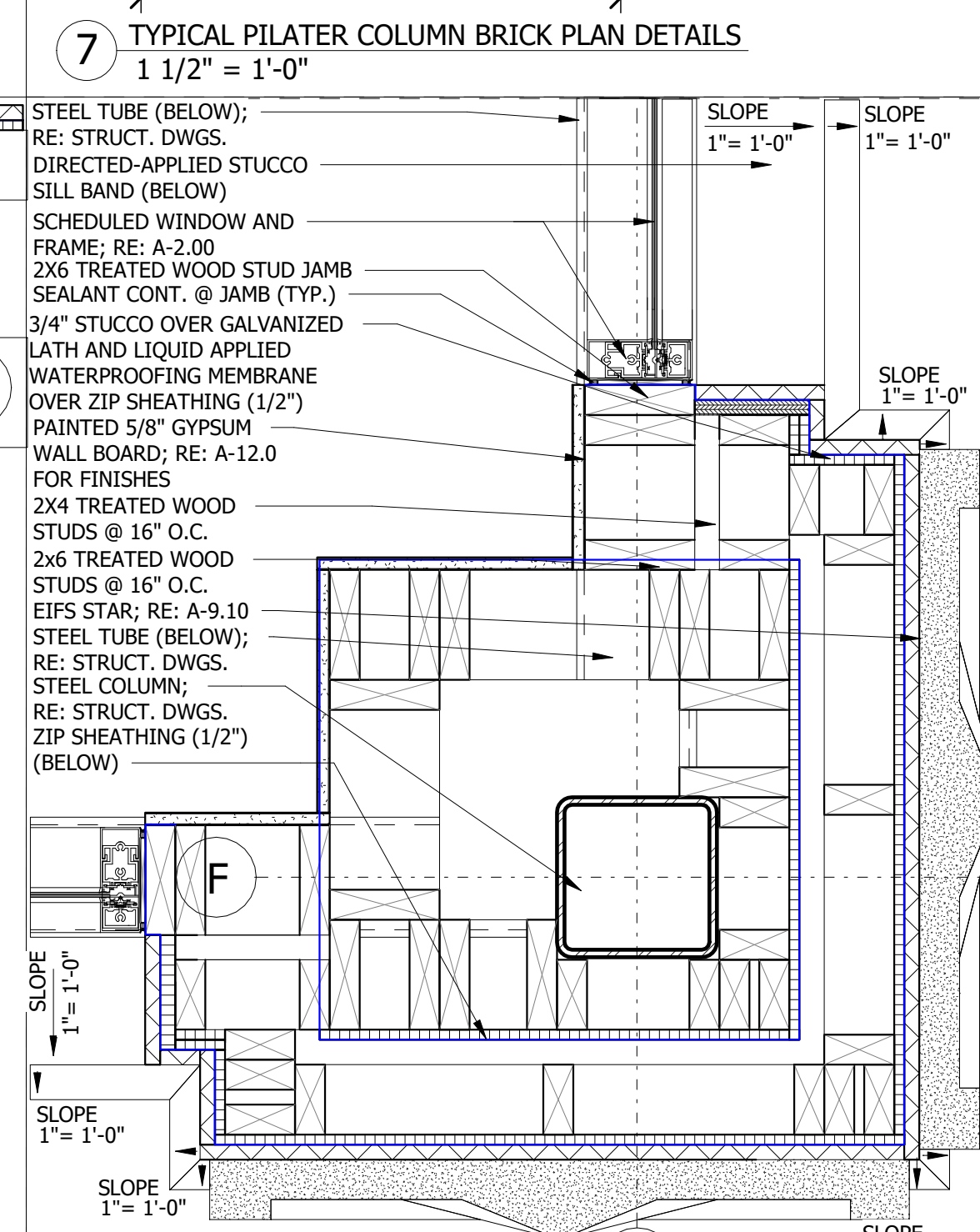
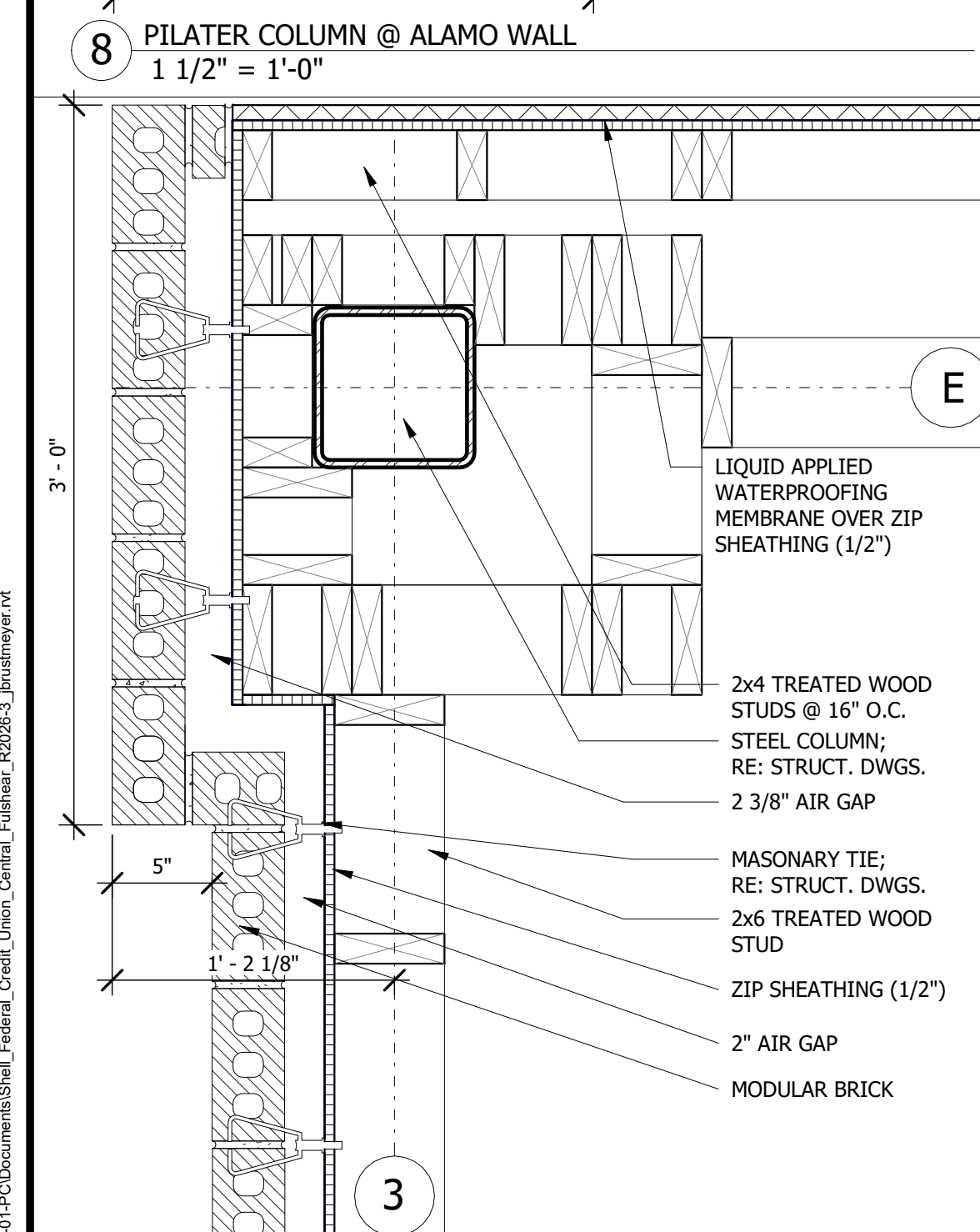
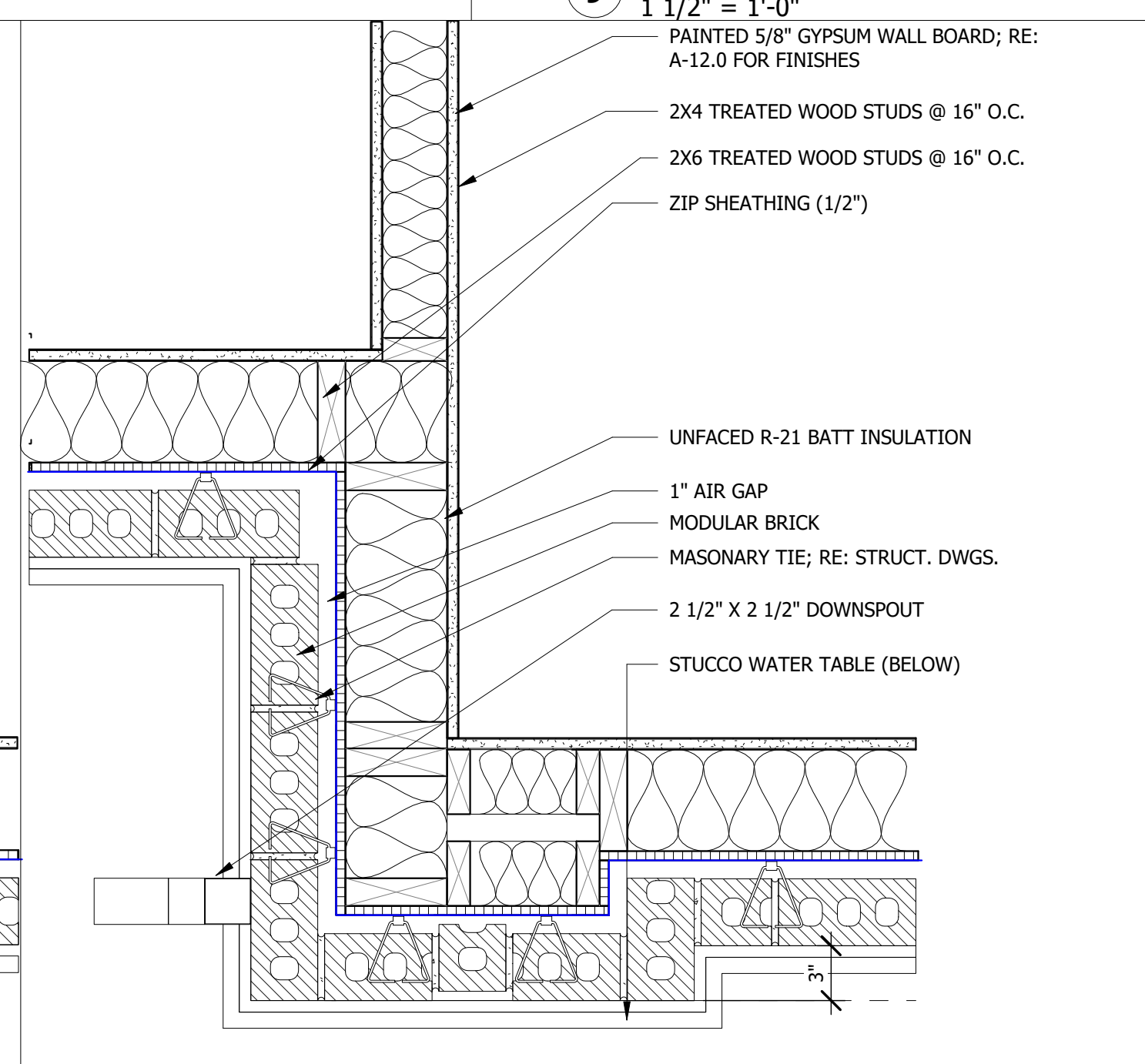
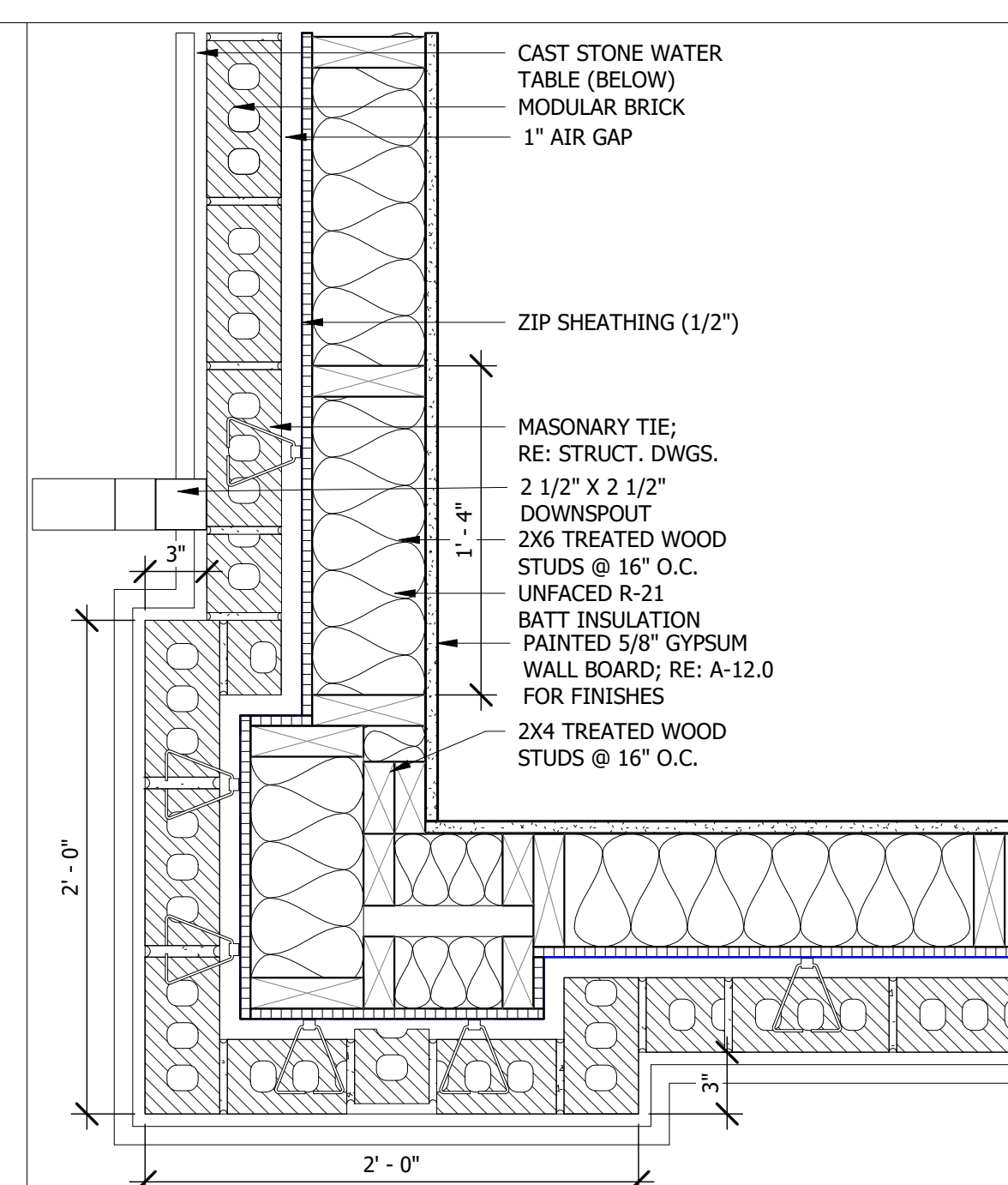
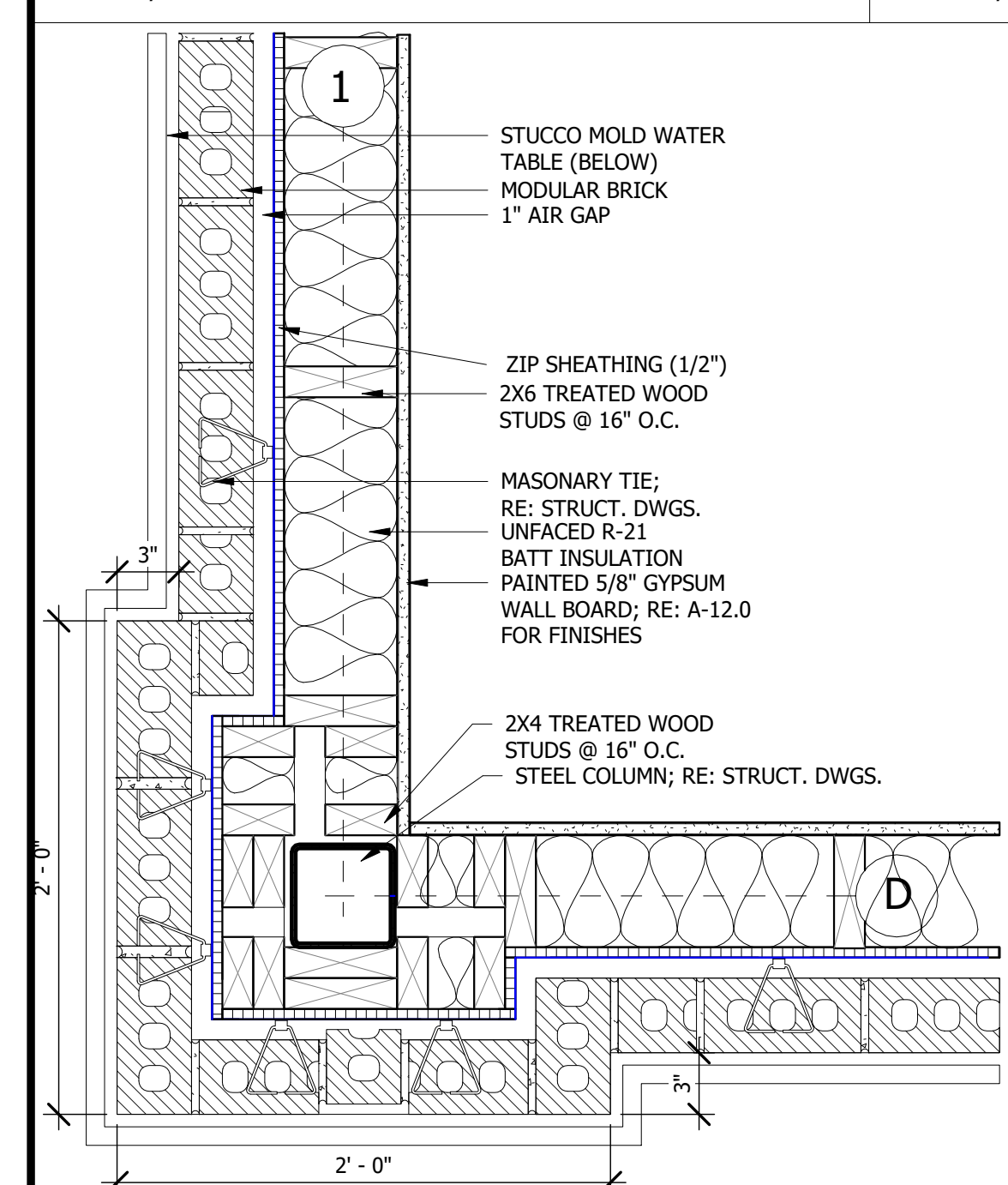
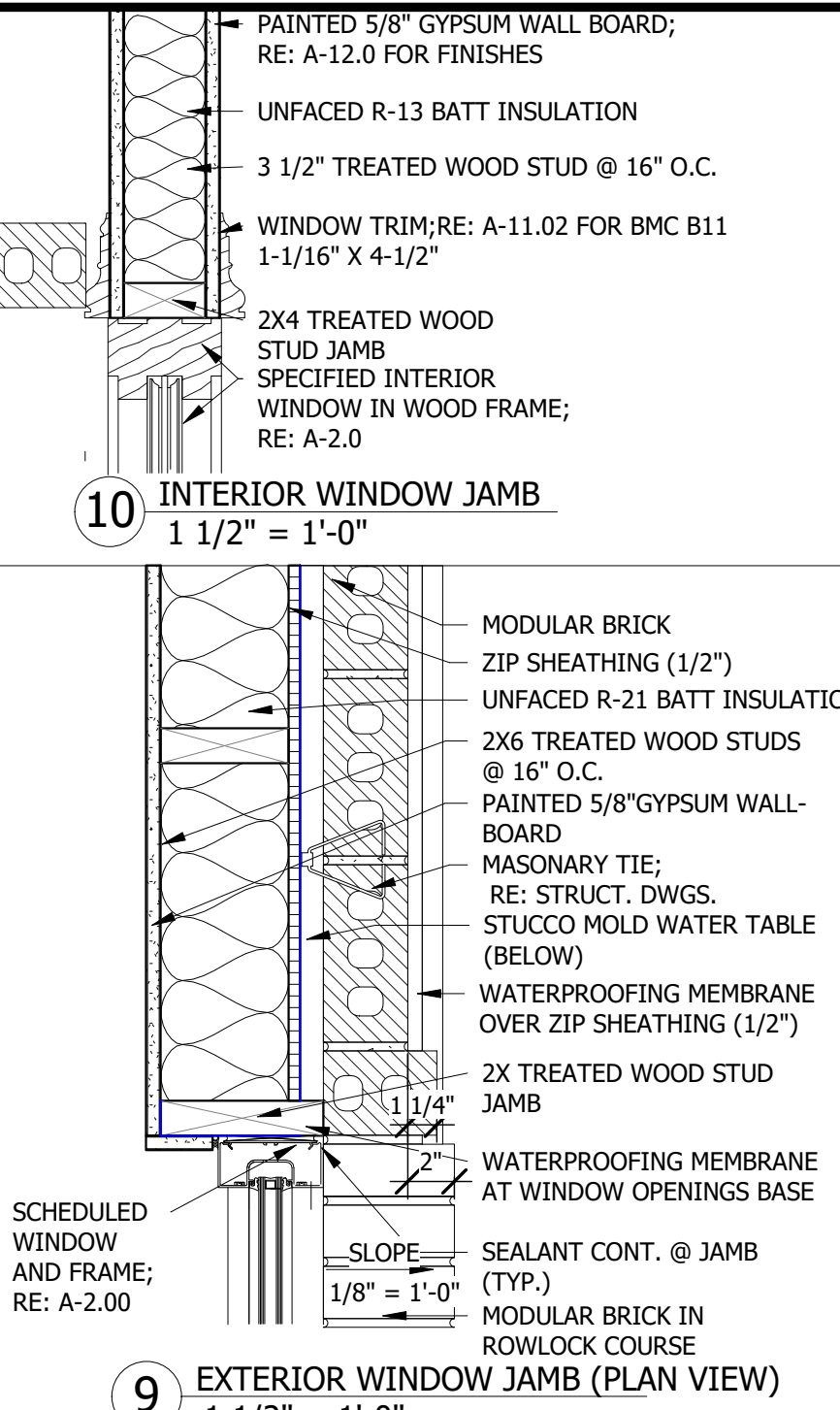
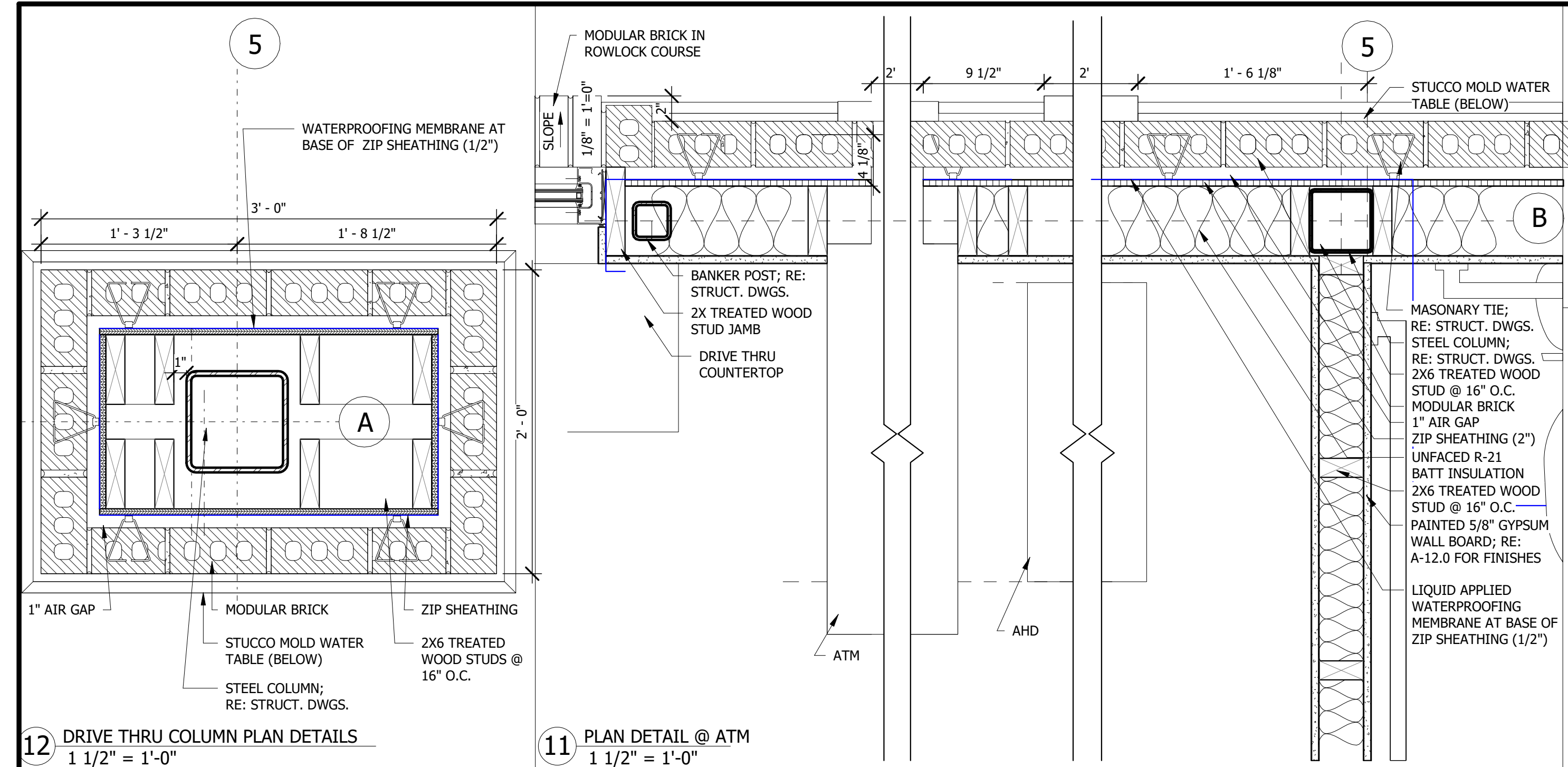
REVISIONS		
MARK	DESCRIPTION	DATE

The information, ideas, designs, details, layouts, techniques, features, arrangements, plans, sequences, dimensions, allowances, tolerances, conceptions, specifications, intentions, technology or embodiments, as illustrated, arranged, displayed, noted, recorded, indicated, represented, disclosed, evidenced, detailed or otherwise reduced to tangible form hereon, either expressly, inherently or by implication, are the confidential and proprietary information of SLI Design, Inc., and shall not be used for any purpose other than the specific project or undertaking identified on the drawing title block or legend for which they are and have been prepared by SLI Design, Inc. Any other reproduction, disclosure or use of any portion of the confidential and proprietary information of SLI Design, Inc., shall be a breach of the obligation of confidence created by the acceptance of this drawing from SLI Design, Inc. for a specific project or contract. Any copying, duplicating, reproducing, utilizing, alteration, modification, revision or change to this drawing, is expressly prohibited unless done with the prior written consent or approval of SLI Design, Inc., and shall not be undertaken without receipt of such prior written approval. This drawing is loaned by SLI Design, Inc., for the limited purpose of complying with a specific contract. The drawing remains the property of SLI Design, Inc., and shall be returned upon request or completion of the contract, unless specifically authorized by contract, under which it was loaned.

PRINT DATE: 4/13/2026 3:03:23 PM



DRAWING TITLE		
<b>ENLARGED PLAN DETAILS</b>		
DRAWN BY	BY	SHEET NO.
CHECKED BY	BM	<b>A-1.21</b>
APPROVED BY	TB	



C:\Users\1641\Documents\Shell Federal Credit Union\_Central\_Fullbar\_R2026-3\_Architectural