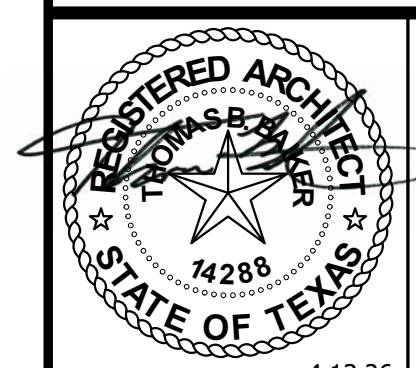


ISSUED FOR CLIENT APPROVAL	DATE
ISSUED FOR BIDDING	1/26/26
ISSUED FOR PERMIT	4/13/2026
ISSUED FOR CONSTRUCTION	4/13/2026

REVISIONS		
MARK	DESCRIPTION	DATE

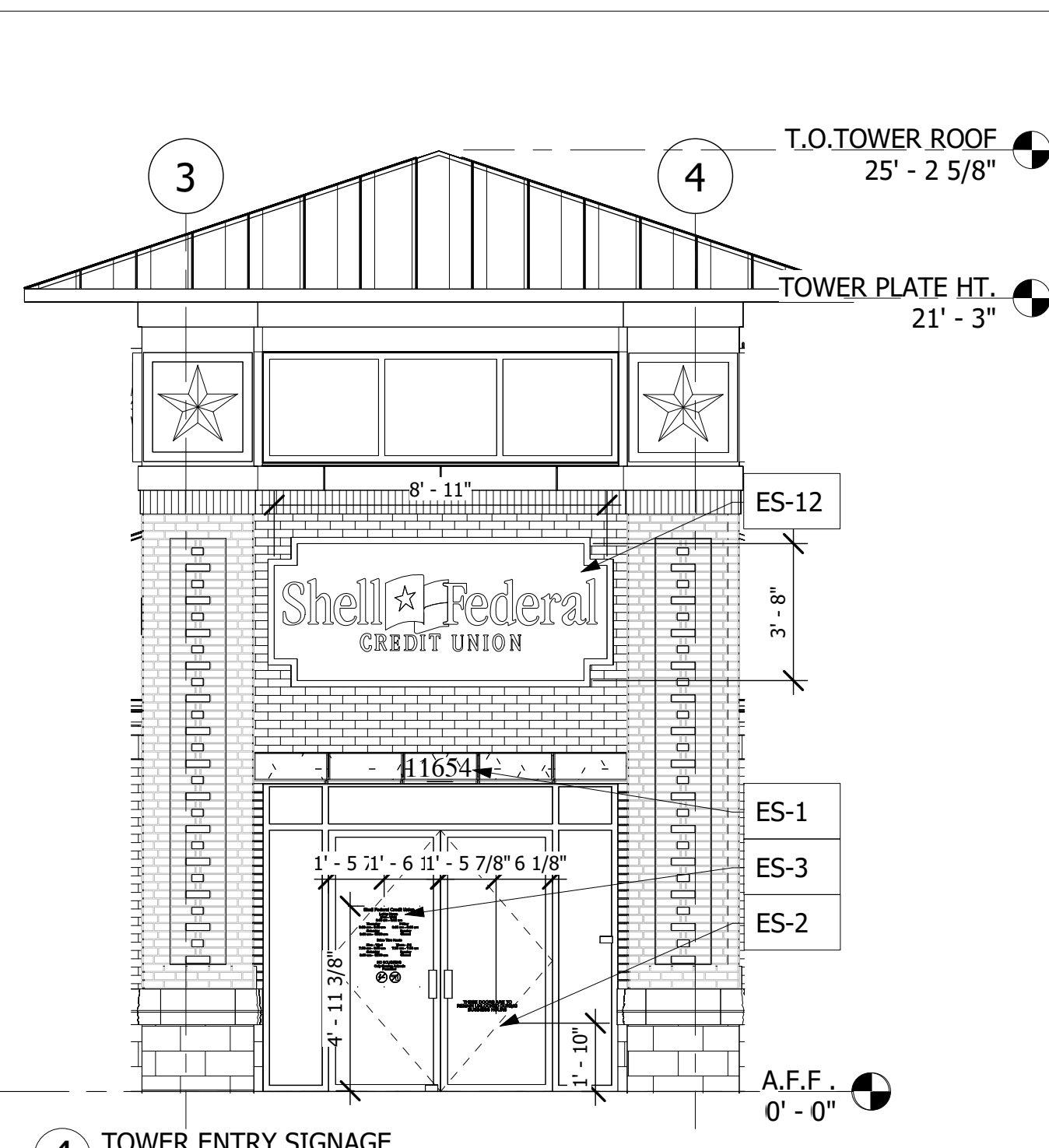
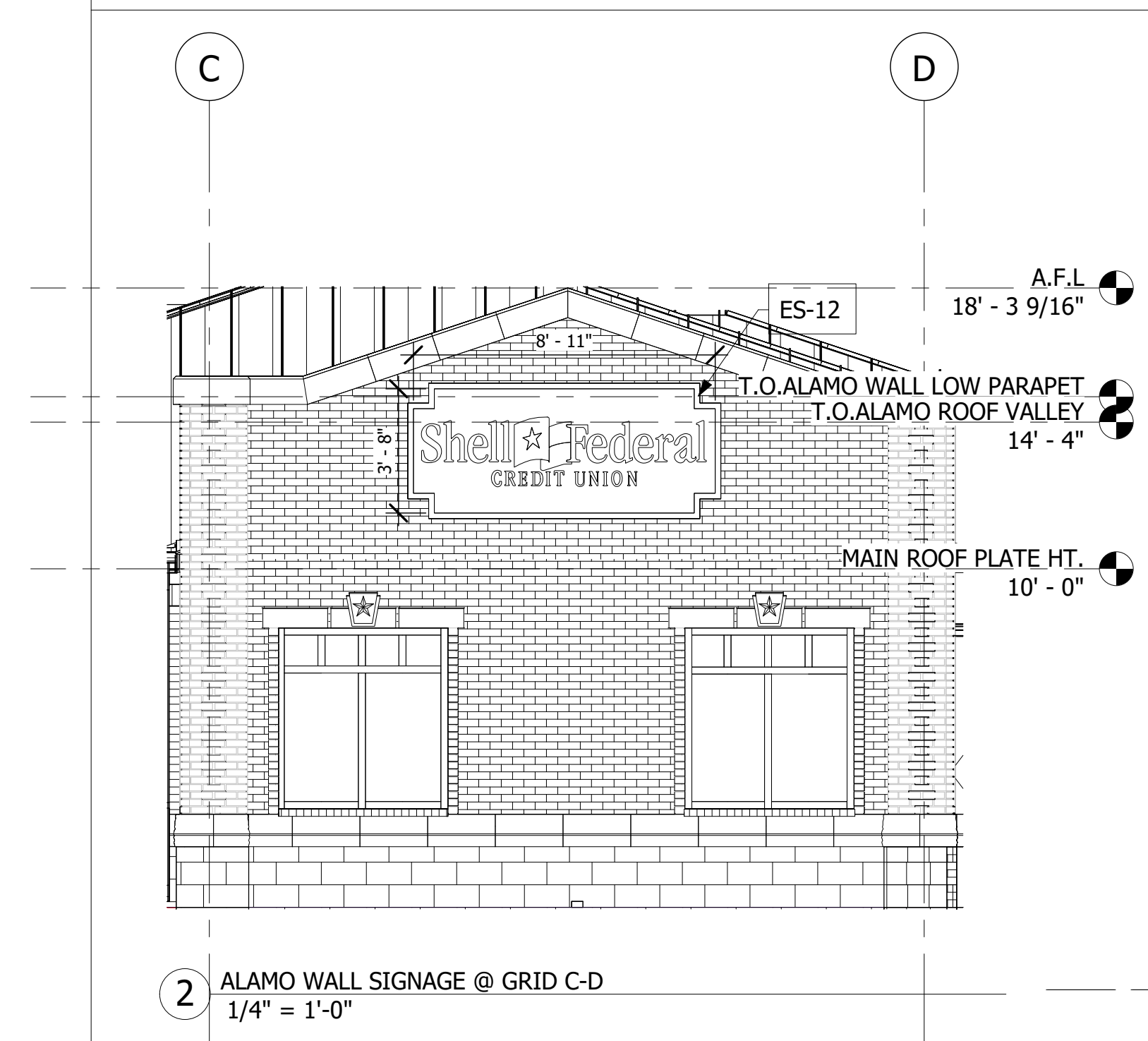
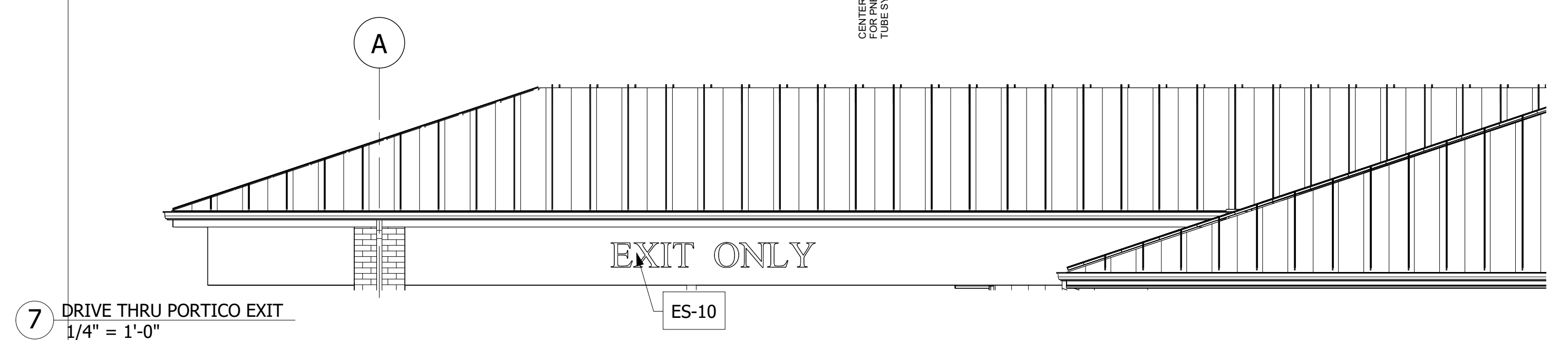
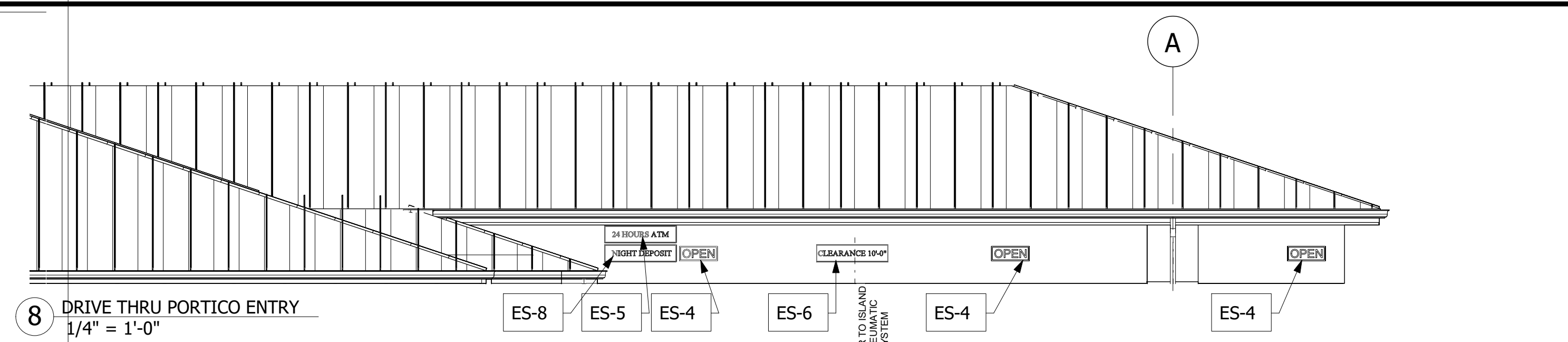
The information, ideas, designs, details, layouts, techniques, features, arrangements, plans, sequences, dimensions, allowances, tolerances, conceptions, specifications, intentions, technology or embodiments, as illustrated, arranged, displayed, noted, recorded, indicated, represented, disclosed, evidenced, detailed or otherwise reduced to tangible form hereon, either expressly, inherently or by implication, are the confidential and proprietary information of SLI Design, Inc., and shall not be used for any purpose other than the specific project or undertaking identified on the drawing title block or legend for which they are and have been prepared by SLI Design, Inc. Any other reproduction, disclosure or use of any portion of the confidential and proprietary information of SLI Design, Inc., shall be a breach of the obligation of confidence created by the acceptance of this drawing from SLI Design, Inc. for a specific project or contract. Any copying, duplicating, reproducing, utilization, alteration, modification, revision or change to this drawing, is expressly prohibited unless done with the prior written consent or approval of SLI Design, Inc., and shall not be undertaken without receipt of such prior written approval. This drawing is loaned by SLI Design, Inc., for the limited purpose of complying with a specific contract. The drawing remains the property of SLI Design, Inc., and shall be returned upon request or completion of the contract, unless specifically authorized by contract, under which it was loaned.

PRINT DATE: 4/13/2026 2:16:57 PM



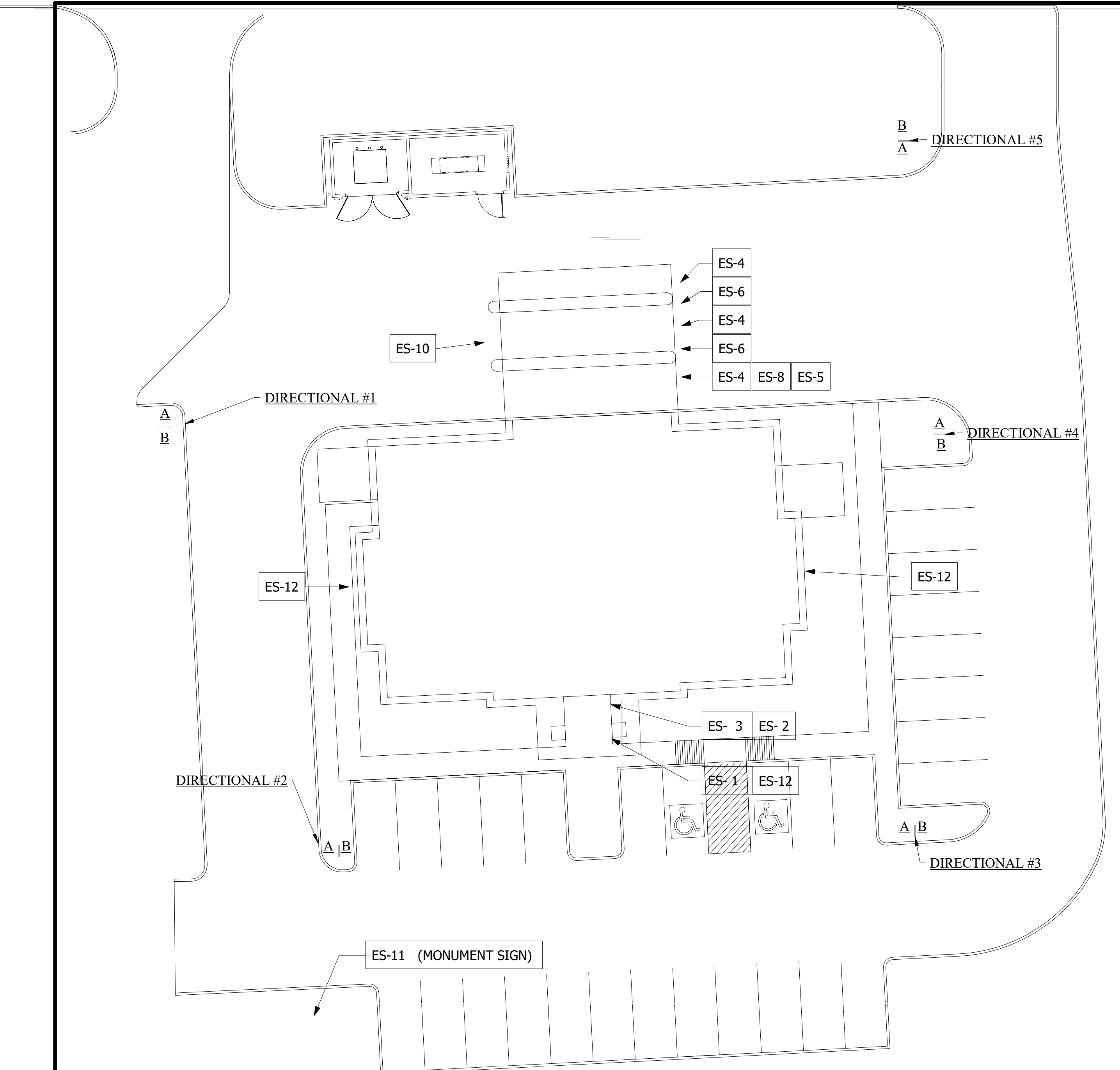
DRAWING TITLE	
<b>EXTERIOR SIGNAGE</b>	
DRAWN BY	Author SHEET NO.
CHECKED BY	Checker
APPROVED BY	Approver

**A-14.10**

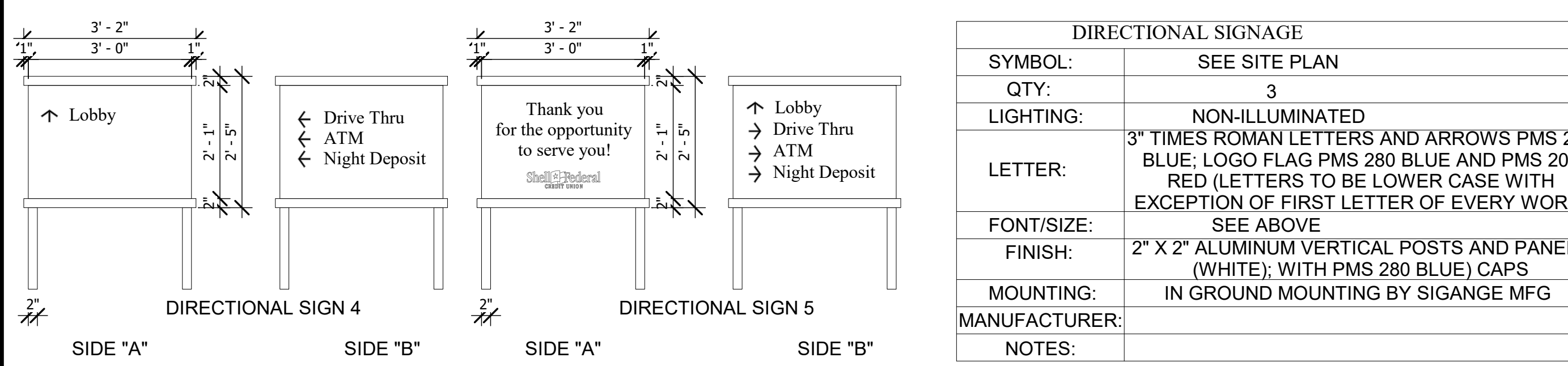
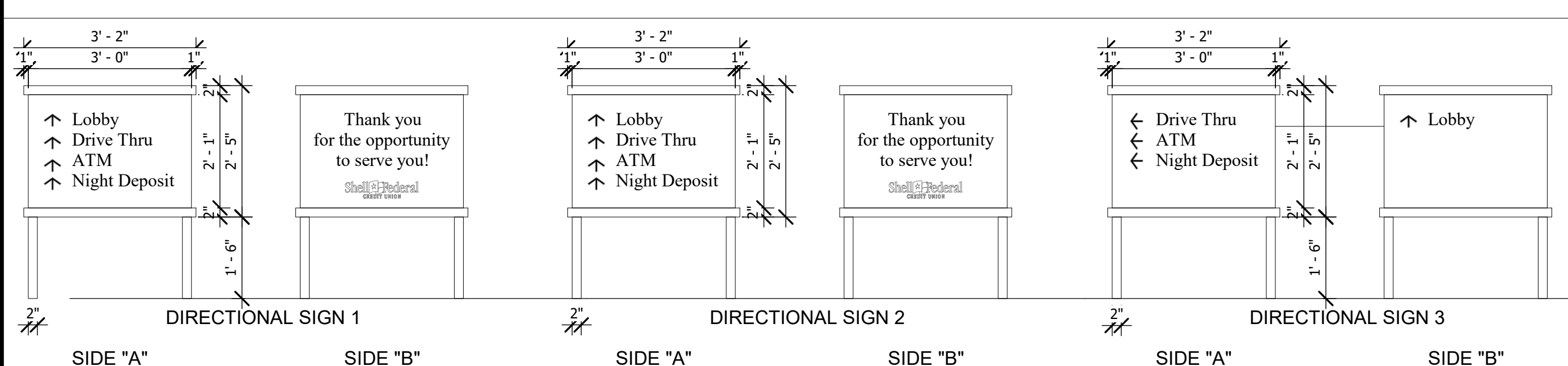


ALAMO WALL SIGNAGE	
SYMBOL:	ES-12
QTY:	2
LIGHTING:	GESES65-3 6500K WHITE LEDS
LETTER:	MATCH LOGO
FONT/SIZE:	MATCH LOGO
FINISH:	MATCH LOGO
MOUNTING:	MOUNT TO STUCCO
MANUFACTURER:	BY SIGNAGE COMPANY
NOTES:	FRONT-LIT CHANNEL LETTERS FACE: 3/16" WHITE ACRYLIC, FINISH V1, V2; TRIMCAP: 1" JEWELITE, PREFINISHED WHITE; RETURNS: 0.3" X .040" ALUMINUM PREFIN. WHITE; BACKS: 0.63" ALUMINUM, PREFINISHED WHITE; POWER SUPPLY: 12V, 60W - HOUSED IN POWERBOX CHANNEL LETTERS TO BE ATTACHED TO BUILDING WITH MINIMUM 3/8" X 5" FASTENERS.

TOWER ENTRY SIGNAGE	
SYMBOL:	ES-12
QTY:	1
LIGHTING:	GESES65-3 6500K WHITE LEDS
LETTER:	MATCH LOGO
FONT/SIZE:	MATCH LOGO
FINISH:	MATCH LOGO
MOUNTING:	MOUNT TO STUCCO
MANUFACTURER:	BY SIGNAGE COMPANY
NOTES:	FRONT-LIT CHANNEL LETTERS FACE: 3/16" WHITE ACRYLIC, FINISH V1, V2; TRIMCAP: 1" JEWELITE, PREFINISHED WHITE; RETURNS: 0.3" X .040" ALUMINUM PREFIN. WHITE; BACKS: 0.63" ALUMINUM, PREFINISHED WHITE; POWER SUPPLY: 12V, 60W - HOUSED IN POWERBOX CHANNEL LETTERS TO BE ATTACHED TO BUILDING WITH MINIMUM 3/8" X 5" FASTENERS.



5 DIRECTIONAL SIGNAGE SITE PLAN  
 1" = 20'-0"  
 1 DIRECTIONAL SIGN SITE PLAN  
 3/4" = 1'-0"



DIRECTIONAL SIGNAGE	
SYMBOL:	SEE SITE PLAN
QTY:	3
LIGHTING:	NON-ILLUMINATED
LETTER:	3" TIMES ROMAN LETTERS AND ARROWS PMS 280 BLUE; LOGO FLAG PMS 280 BLUE AND PMS 207 RED (LETTERS TO BE LOWER CASE WITH EXCEPTION OF FIRST LETTER OF EVERY WORD)
FONT/SIZE:	SEE ABOVE
FINISH:	2" X 2" ALUMINUM VERTICAL POSTS AND PANELS (WHITE); WITH PMS 280 BLUE) CAPS
MOUNTING:	IN GROUND MOUNTING BY SIGANCE MFG
MANUFACTURER:	
NOTES:	