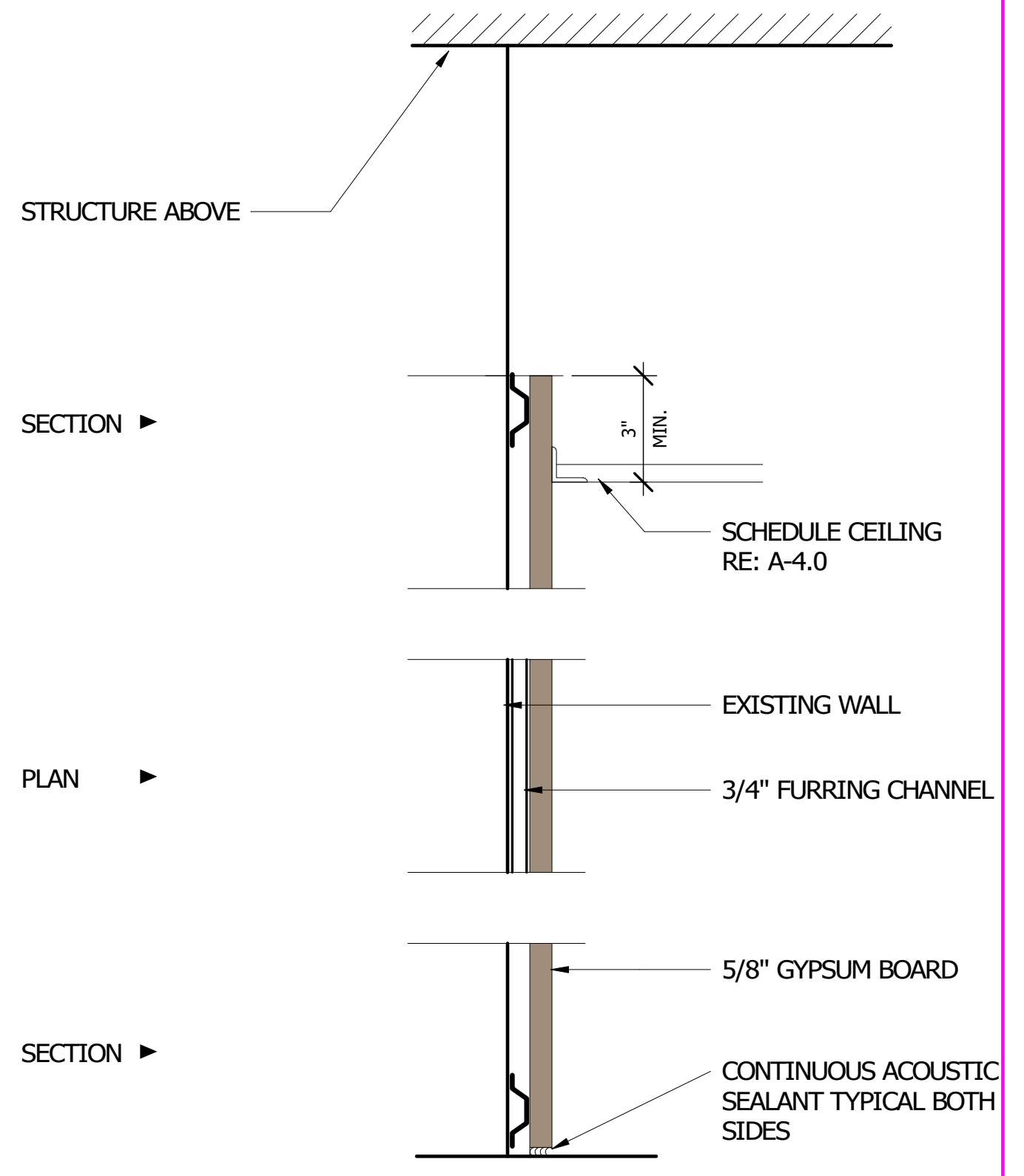




PROSPERITY BANK - REMODEL
2424 MARKET STREET
GALVESTON, TEXAS 77550

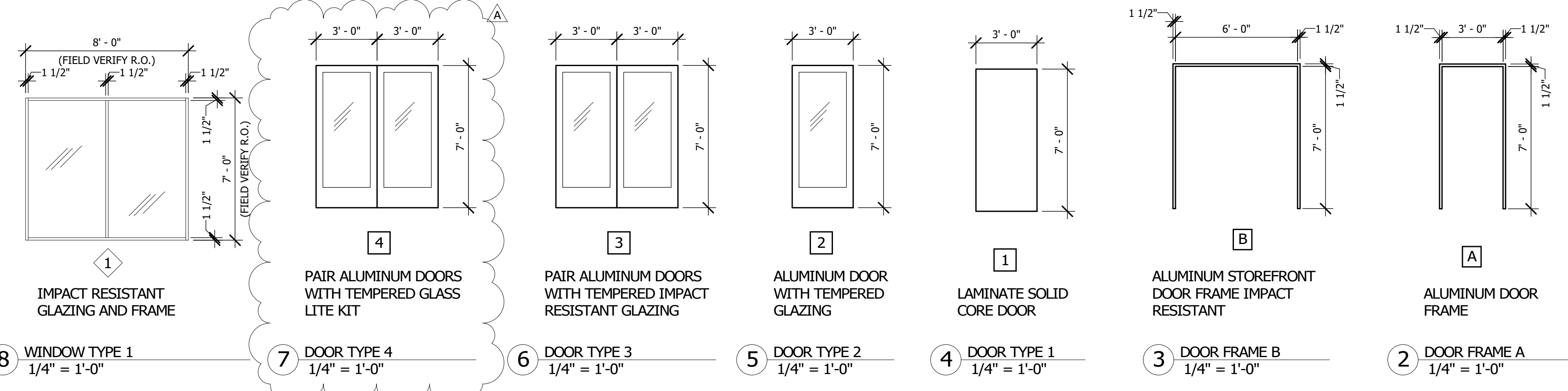
Project Number : 8973

DOOR #	LOCATION		HAND	TYPE	DOOR			FRAME		HARDWARE		NOTES
	FROM	TO			FINISH	WIDTH	HEIGHT	TYPE	FINISH	SET	FINISH	
100	EXTERIOR	LOBBY 100	LHR/RHR	3	CLEAR ANODIZED	6' - 0"	7' - 0"	B	ALUMINUM	01		IMPACT RESISTANT GLASS AND FRAMES
101	LOBBY 100	OFFICE 101	LH	2	CLEAR ANODIZED	3' - 0"	7' - 0"	A	ALUMINUM	02	CLEAR ANODIZED	
102	LOBBY 100	OFFICE 103	RH	2	CLEAR ANODIZED	3' - 0"	7' - 0"	A	ALUMINUM	02	CLEAR ANODIZED	
103	LOBBY 100	OFFICE 104	RH	2	CLEAR ANODIZED	3' - 0"	7' - 0"	A	ALUMINUM	02	CLEAR ANODIZED	
104	LOBBY 100	PRESIDENT 106	RH	2	CLEAR ANODIZED	3' - 0"	7' - 0"	A	ALUMINUM	02	CLEAR ANODIZED	
105	PRESIDENT 106	CONFERENCE 107	LHR	2	CLEAR ANODIZED	3' - 0"	7' - 0"	A	ALUMINUM	02	CLEAR ANODIZED	
106	HALL 109	CONFERENCE 107	LH/RH	4	CLEAR ANODIZED	6' - 0"	7' - 0"	D		02	CLEAR ANODIZED	
107	HALL 109	MECH/ELEC 108	RH	1	CLEAR ANODIZED	3' - 0"	7' - 0"	A	ALUMINUM	03	CLEAR ANODIZED	
108	HALL 109	EXTERIOR	RH	1		3' - 0"	7' - 0"	HM	HM	EXISTING	CLEAR ANODIZED	
109	HALL 109	RESTROOM 111	RH	1	CLEAR ANODIZED	3' - 0"	7' - 0"	A	ALUMINUM	04	CLEAR ANODIZED	
110	HALL 109	RESTROOM 111	RH	1	CLEAR ANODIZED	3' - 0"	7' - 0"	A	ALUMINUM	04	CLEAR ANODIZED	
111	HALL 109	BREAKROOM 113	LH	2	CLEAR ANODIZED	3' - 0"	7' - 0"	A	ALUMINUM	02	CLEAR ANODIZED	FROSTED FILM
113	TELLERS 114	CASH ROOM 115	RH	1	CLEAR ANODIZED	3' - 0"	7' - 0"	A	ALUMINUM	05	CLEAR ANODIZED	FROSTED FILM
114	LOBBY 100	SAFE DEPOSIT 116	LH	2	CLEAR ANODIZED	3' - 0"	7' - 0"	A	ALUMINUM	05	CLEAR ANODIZED	FROSTED FILM
115	LOBBY 100	ATM & STORAGE 118	LH	2	CLEAR ANODIZED	3' - 0"	7' - 0"	A	ALUMINUM	05	CLEAR ANODIZED	FROSTED FILM
116	LOBBY 100	SAFE DEPOSIT 116	LH	2	CLEAR ANODIZED	3' - 0"	7' - 0"	A	ALUMINUM	05	CLEAR ANODIZED	FROSTED FILM

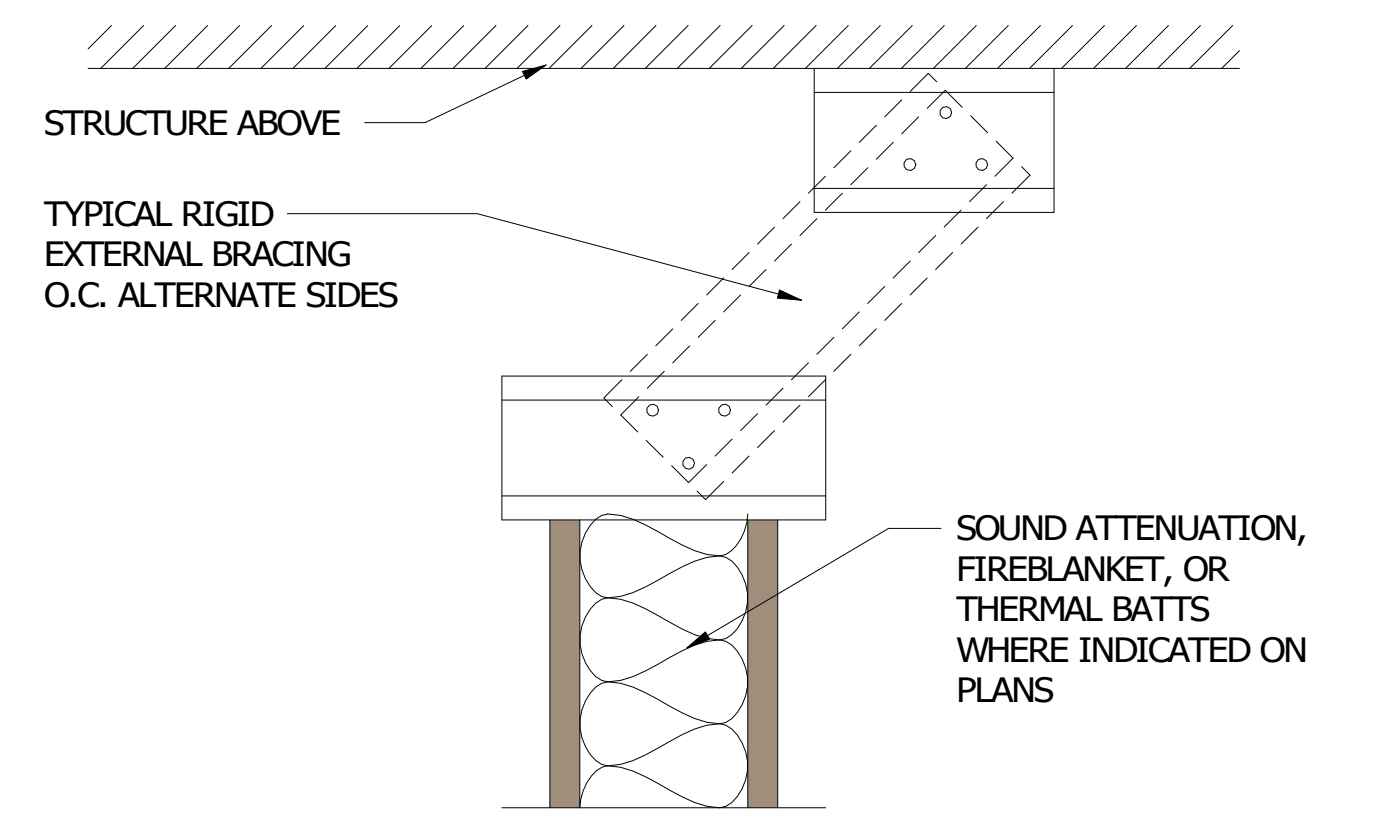


PARTITION TYPE X:
3/4" FURRING CHANNEL @ 16" O.C.
WITH ONE LAYER OF 5/8" GYPSUM BOARD

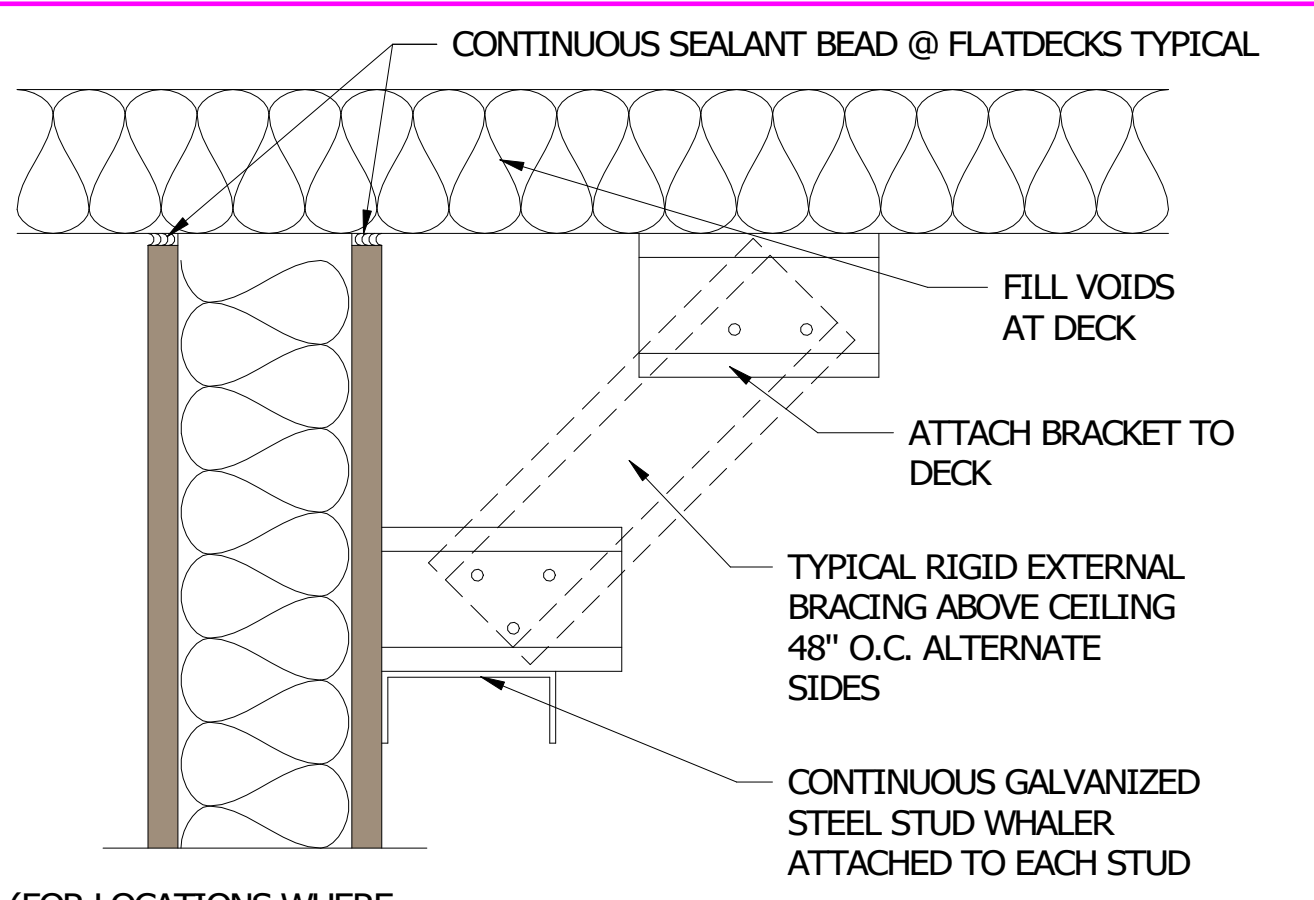
PARTITION TYPE: X



11 PARTITION X - FURRING CHANNEL
3" = 1'-0"

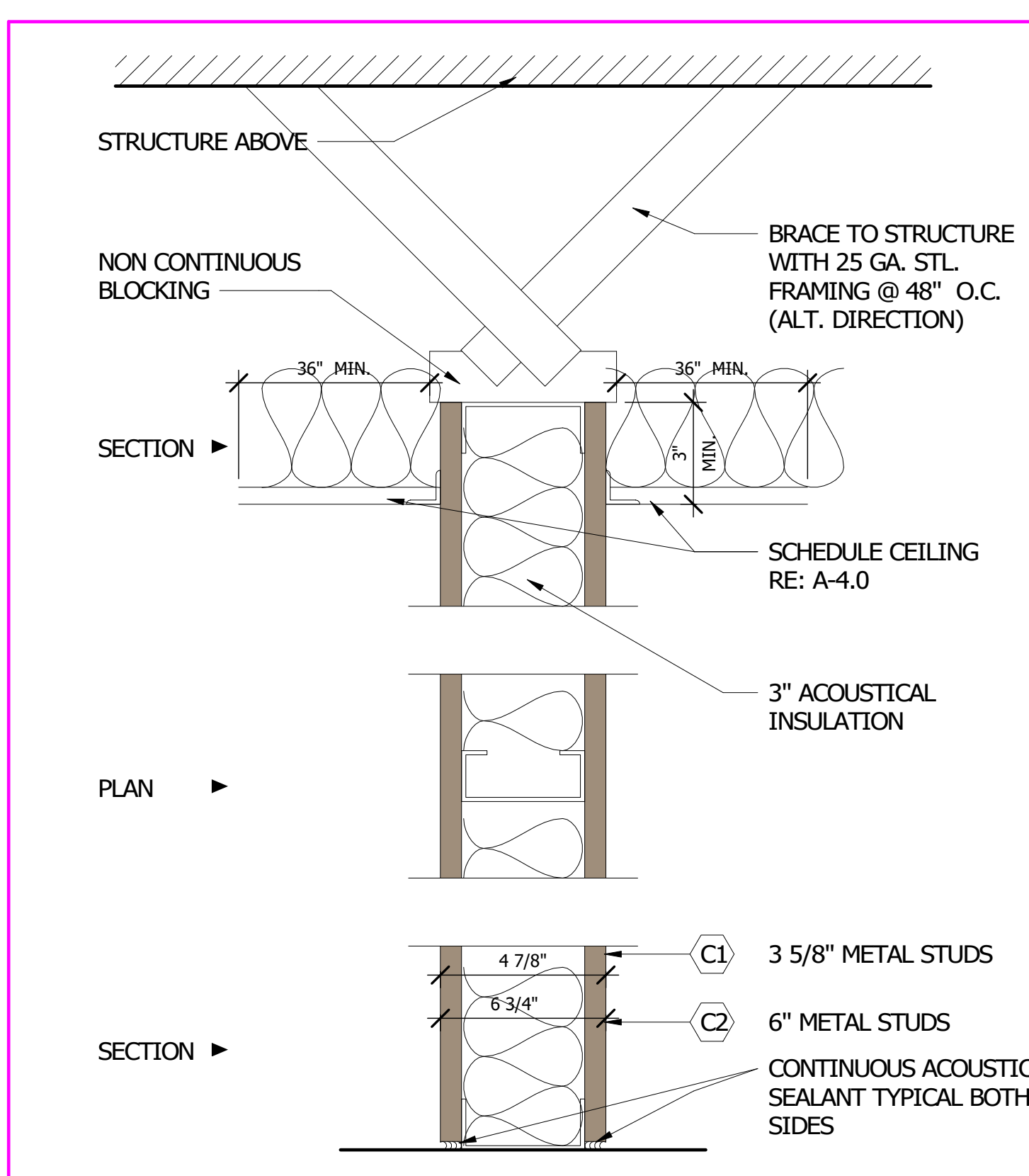


HEAD (FOR LOCATIONS WHERE PARTITIONS DO NOT ATTACH TO DECK ABOVE)



HEAD (FOR LOCATIONS WHERE PARTITIONS HEIGHT EXCEEDS LISTED LIMITING HEIGHT)

BRACE DETAIL GENERAL SCALE : N.T.S.



PARTITION TYPE C:
25 GA. METAL STUDS @ 16" O.C.
WITH ONE LAYER OF 5/8" GYPSUM BOARD EACH SIDE
AND 3" FIBERGLASS ACOUSTICAL INSULATION FULL HEIGHT

PARTITION TYPE: C GENERAL SCALE : N.T.S.

GENERAL NOTES

- NOTIFY ARCHITECT OF ANY DISCREPANCIES AND/OR OMISSIONS.
- REMODEL PROJECTS REQUIRE FIELD VERIFICATION BY SUBCONTRACTOR.
- SAMPLE SHALL BE SUBMITTED TO ARCHITECT FOR APPROVAL.

- HW SET #01 (Double Store Front)**
- 2 ea. Top Pivot - (by s.f. mfr.)
 - 2 ea. Intermediate Pivot - (by s.f. mfr.)
 - 2 ea. Bottom Pivot - (by s.f. mfr.)
 - 1 ea. Threshold - (by s.f. mfr., to match existing)
 - 2 ea. Push and pull bar set
 - 1 set Weatherstripping - (by s.f. mfr.)
 - 2 ea. Closer - (by s.f. mfr.)
 - 1 set Flush Bolt (top & bottom, by s.f. mfr.)
 - 1 ea. Cylinder with Thumb Turn Lock and Lock Indicator on Interior Side - (by s.f. mfr.)

- HW SET #02 (Passage Set)**
- 2 pr. Butts - Hager BB1279 4 1/2 x 4
 - 1 ea. Passage Set - Hager 2510 Whithnell
 - 1 ea. Floor Stop - Hager 242F

- HW SET #03 (Storeroom Lockset)**
- 2 pr. Butts - Hager BB1279 4 1/2 x 4 1/2
 - 1 ea. Storeroom Lockset - Hager 2550 Whithnell
 - 1 ea. Floor Stop - Hager 242F

- HW SET #04 (Privacy Lockset)**
- 2 pr. Butts - Hager BB1279 4 1/2 x 4 1/2
 - 1 ea. Passage Latchset - Hager 2510
 - 1 ea. Thumb turn deadbolt & Occupancy Indicator - Hager 3216
 - 1 ea. Floor Stop - Hager 242F
 - 1 ea. Closer - Hager 5300-PAR-13

- HW SET #05 (Keypad Lockset)**
- 2 pr. Butts - Hager BB1279 4 1/2 x 4 1/2
 - 1 ea. Passage Latchset - Hager 2510
 - 1 ea. YALE nextTOUCH Keypad
 - 1 ea. Floor Stop - Hager 242F
 - 1 ea. Closer - Hager 5300-PAR-13

10 BRACE DETAIL - MTL STUD
3" = 1'-0"

9 PARTITION C - MTL STUD
3" = 1'-0"

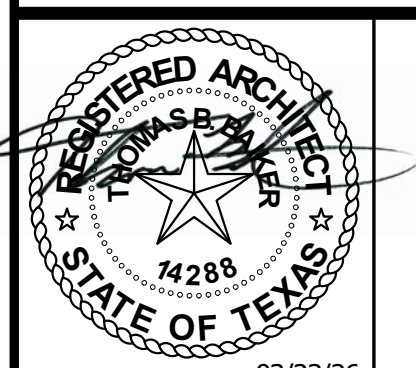
ISSUED FOR CLIENT APPROVAL	DATE
ISSUED FOR BIDDING	02/25/26
ISSUED FOR PERMIT	03/23/26
ISSUED FOR CONSTRUCTION	

REVISIONS

MARK	DESCRIPTION	DATE
A	Addendum A	03/23/26

The information, ideas, designs, details, layouts, techniques, features, arrangements, plans, sequences, dimensions, allowances, tolerances, concessions, specifications, intentions, technology or embodiments, as illustrated, arranged, displayed, noted, recorded, indicated, represented, disclosed, evidenced, detailed or otherwise reduced to tangible form hereby, either expressly, inherently or by implication, are the confidential and proprietary information of SLI Design, Inc., and shall not be used for any purpose other than the specific project or undertaking identified on the drawing title block or legend for which they are and have been prepared by SLI Design, Inc. Any other reproduction, disclosure or use of any portion of the confidential and proprietary information of SLI Design, Inc., shall be a breach of the obligation of confidence created by the acceptance of this drawing from SLI Design, Inc. for a specific project or contract. Any copying, duplication, reproduction, utilization, alteration, modification, revision or change to this drawing, is expressly prohibited unless done with the prior written consent or approval of SLI Design, Inc., and shall not be undertaken without receipt of such prior written approval. This drawing is loaned by SLI Design, Inc., for the limited purpose of complying with a specific contract. The drawing remains the property of SLI Design, Inc., and shall be returned upon request or completion of the contract, unless specifically authorized by contract, under which it was loaned.

PRINT DATE: 3/23/2026 11:45:56 AM



DRAWING TITLE
SCHEDULES

DRAWN BY Author SHEET NO.
CHECKED BY Checker
APPROVED BY Approver

A-2.00