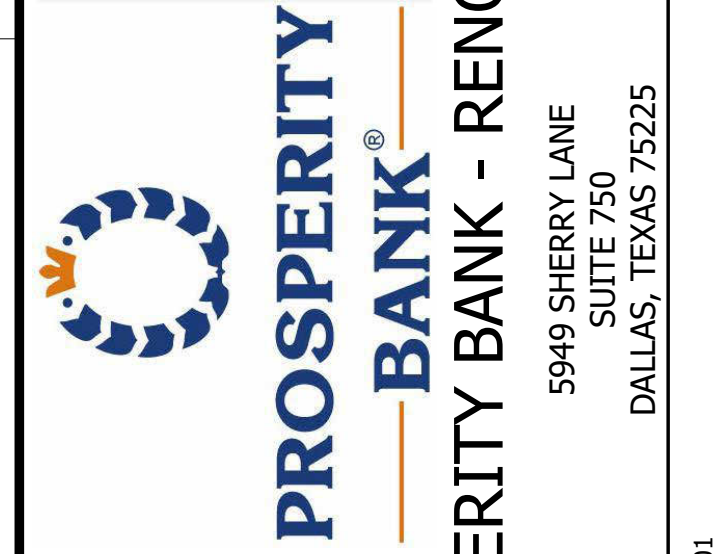




ARCHITECTURE | DESIGN | CONSTRUCTION
 15810 PARK TEN PLACE, SUITE 300
 HOUSTON, TEXAS 77084
 713-465-4650
 www.sligroup.com

SPACE LEFT BLANK FOR STAMP



PROSPERITY BANK - RENOVATION

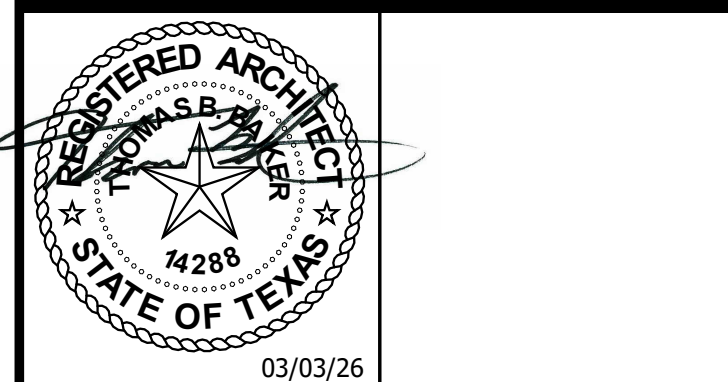
Project Number : 25-8974-01

ISSUED FOR CLIENT APPROVAL	DATE
ISSUED FOR BIDDING	02/24/26
ISSUED FOR PERMIT	02/25/26
ISSUED FOR CONSTRUCTION	

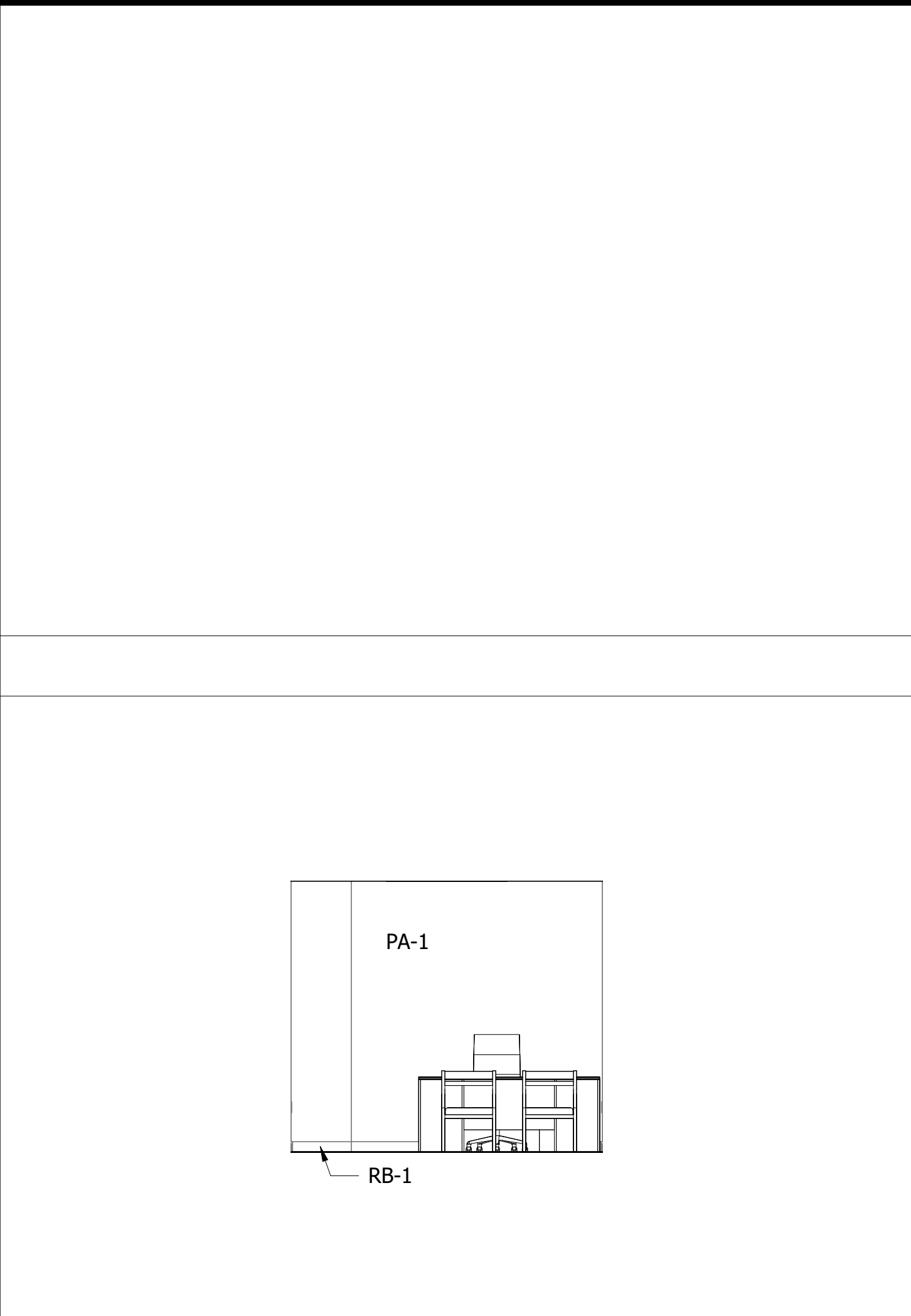
REVISIONS		
MARK	DESCRIPTION	DATE

The information, ideas, designs, details, layouts, techniques, features, arrangements, plans, sequences, dimensions, allowances, tolerances, conceptions, specifications, intentions, technology or embodiments, as illustrated, arranged, displayed, noted, recorded, indicated, represented, disclosed, evidenced, detailed or otherwise reduced to tangible form herein, either expressly, inherently or by implication, are the confidential and proprietary information of SLI Design, Inc. and shall not be used for any purpose other than the specific project or undertaking identified on the drawing title block or legend for which they are and have been prepared by SLI Design, Inc. Any other reproduction, disclosure or use of any portion of the confidential and proprietary information of SLI Design, Inc., shall be a breach of the obligation of confidence created by the acceptance of this drawing from SLI Design, Inc. for a specific project or Contract. Any copying, duplicating, reproducing, utilization, alteration, modification, revision or change to this drawing, is expressly prohibited unless done with the prior written consent or approval of SLI Design, Inc. and shall not be undertaken without receipt of such prior written approval. This drawing is loaned by SLI Design, Inc. for the limited purpose of complying with a specific Contract. The drawing remains the property of SLI Design, Inc. and shall be returned upon request or completion of the contract, unless specifically authorized by Contract, under which it was loaned.

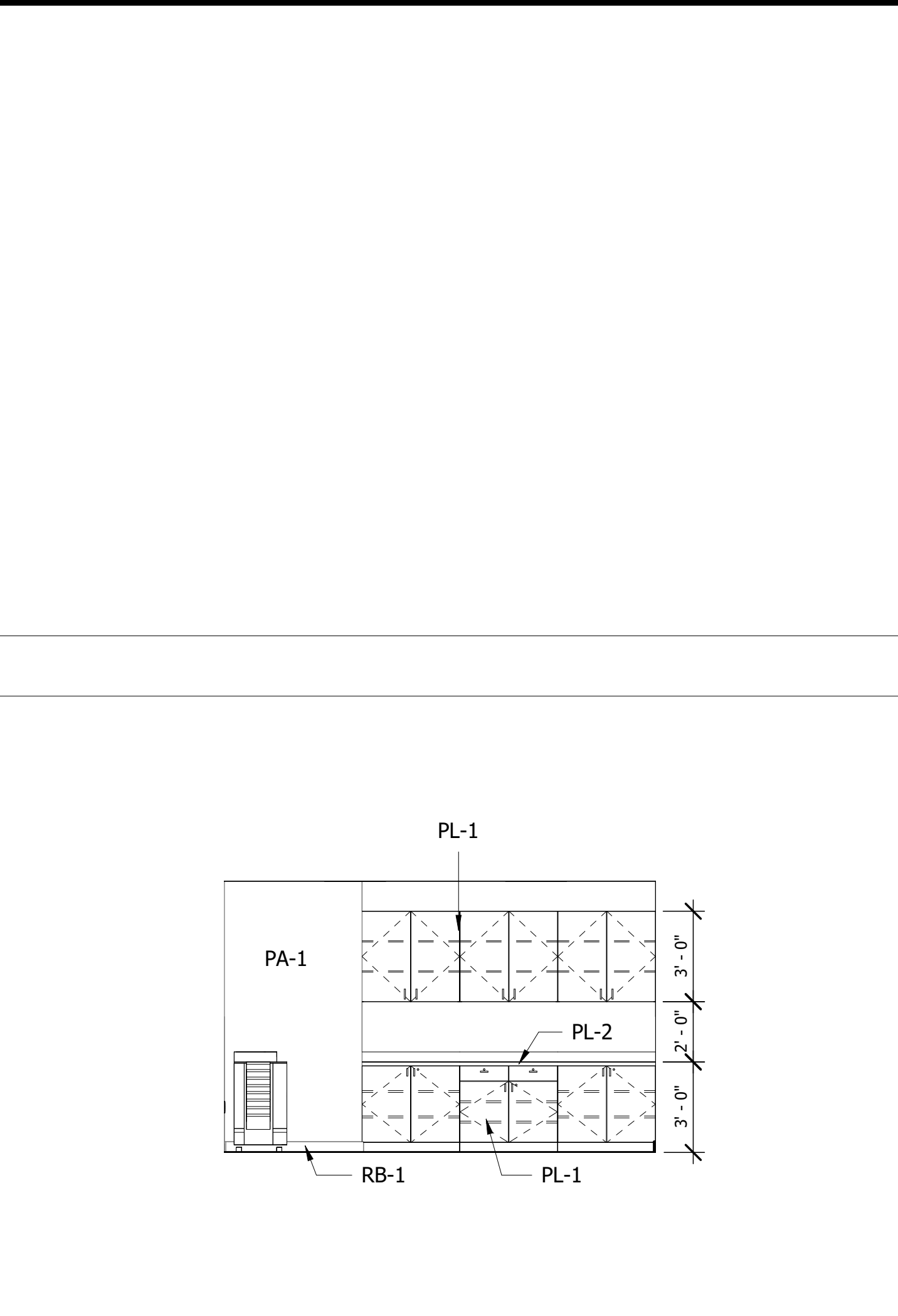
PRINT DATE: 3/4/2026 10:43:09 AM



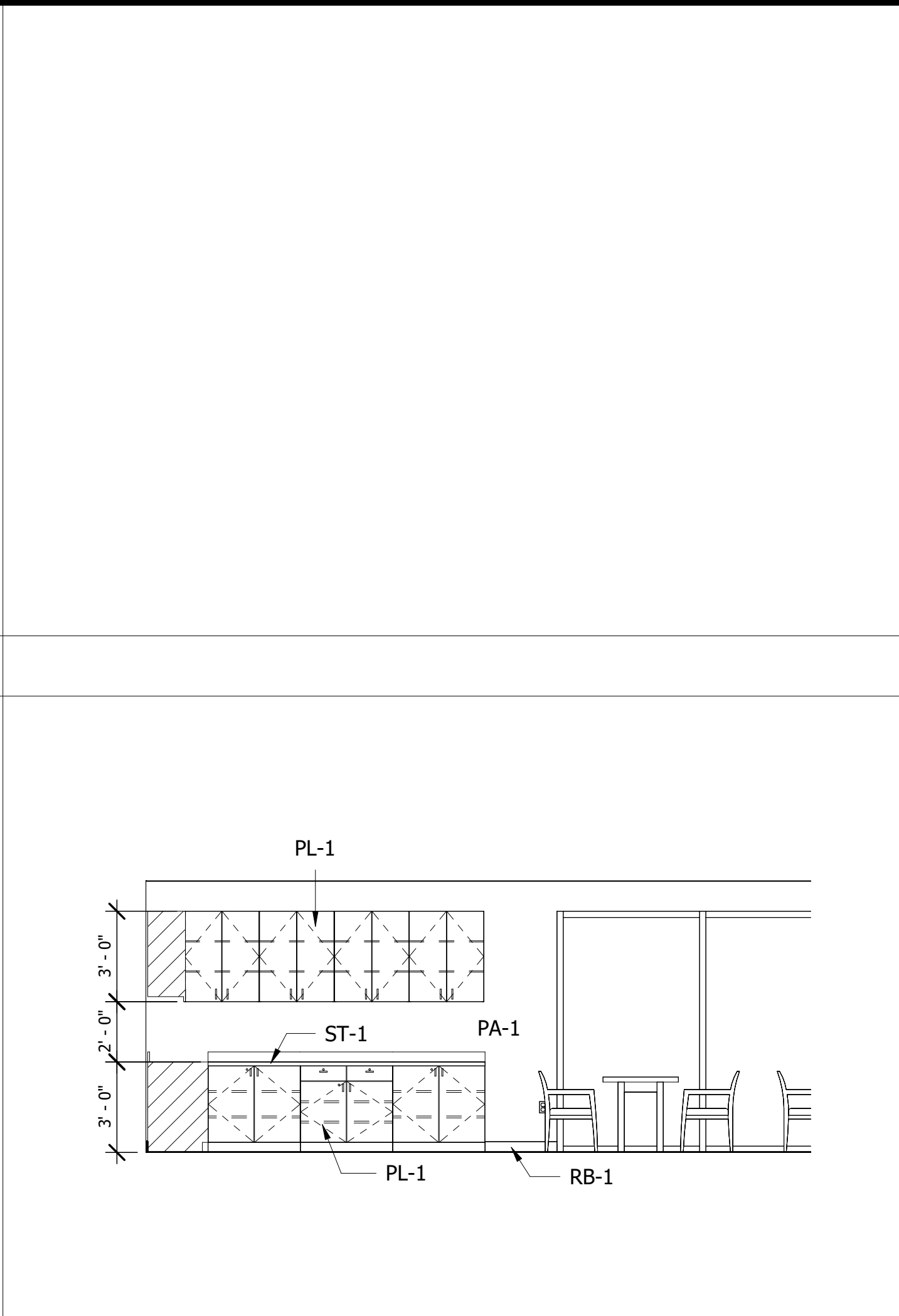
DRAWING TITLE	
INTERIOR ELEVATIONS	
DRAWN BY	Author SHEET NO.
CHECKED BY	Checked A-10.00
APPROVED BY	Approver



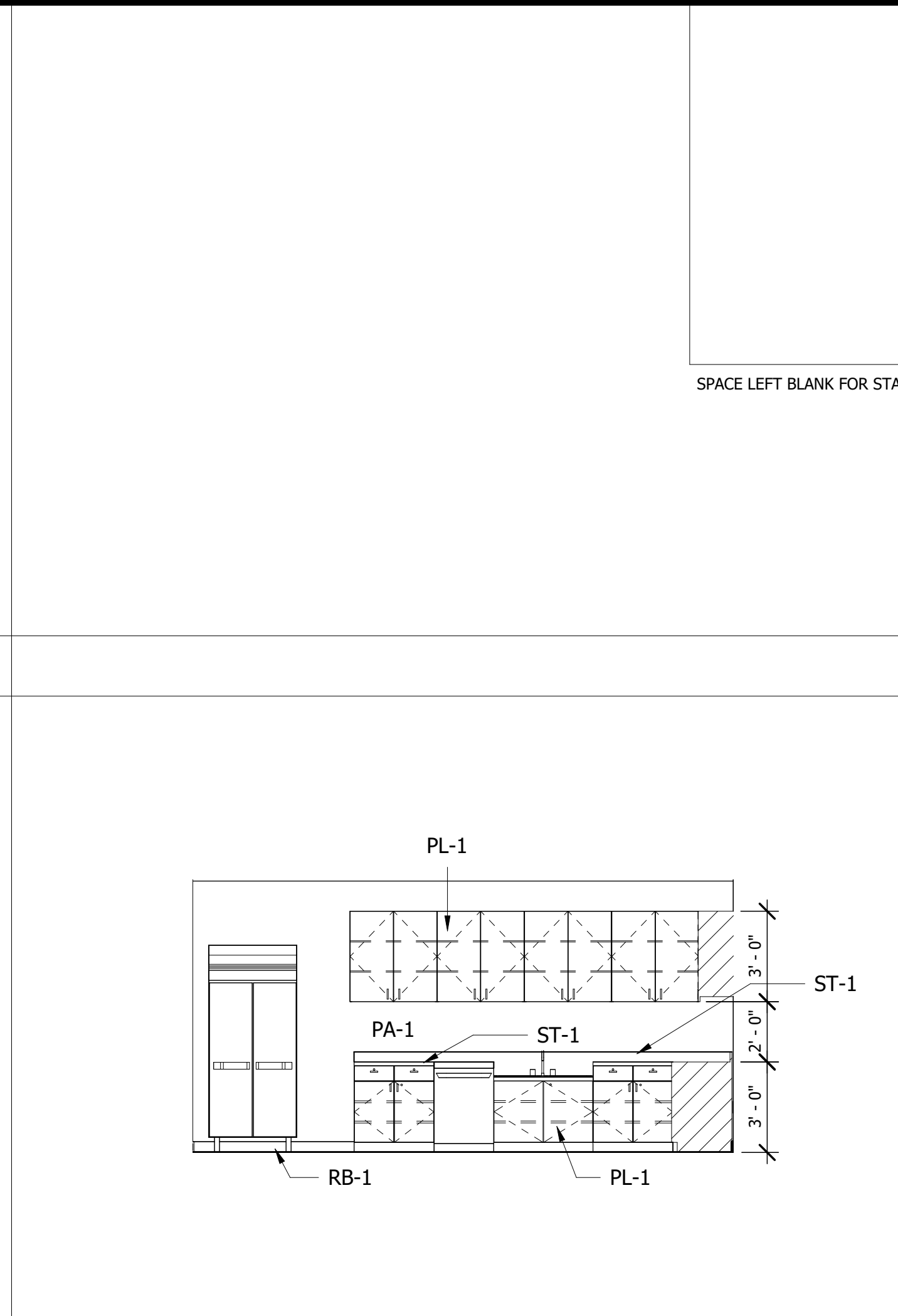
12 754 OFFICE - SOUTH
1/4" = 1'-0"



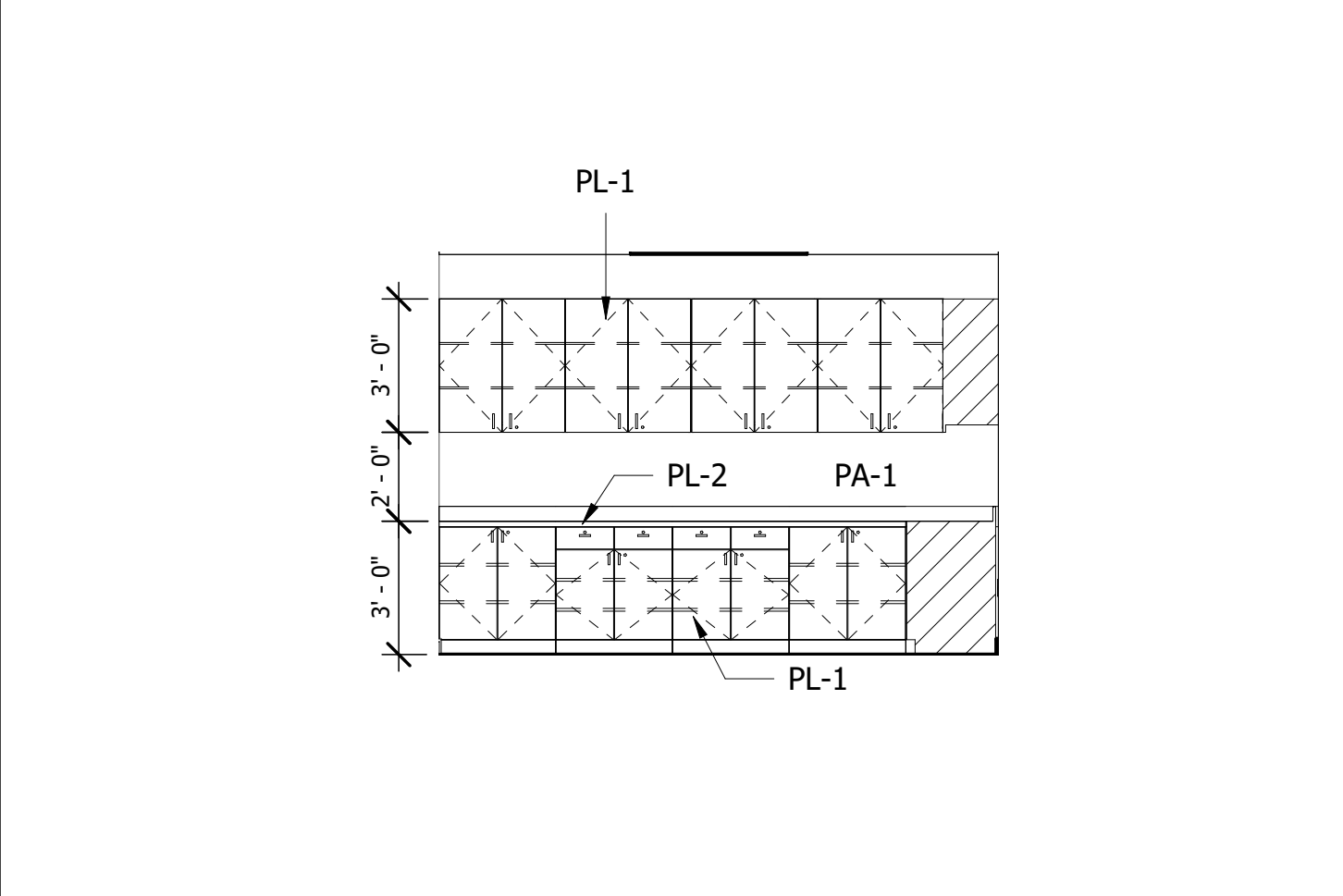
11 762 WORK AREA - EAST
1/4" = 1'-0"



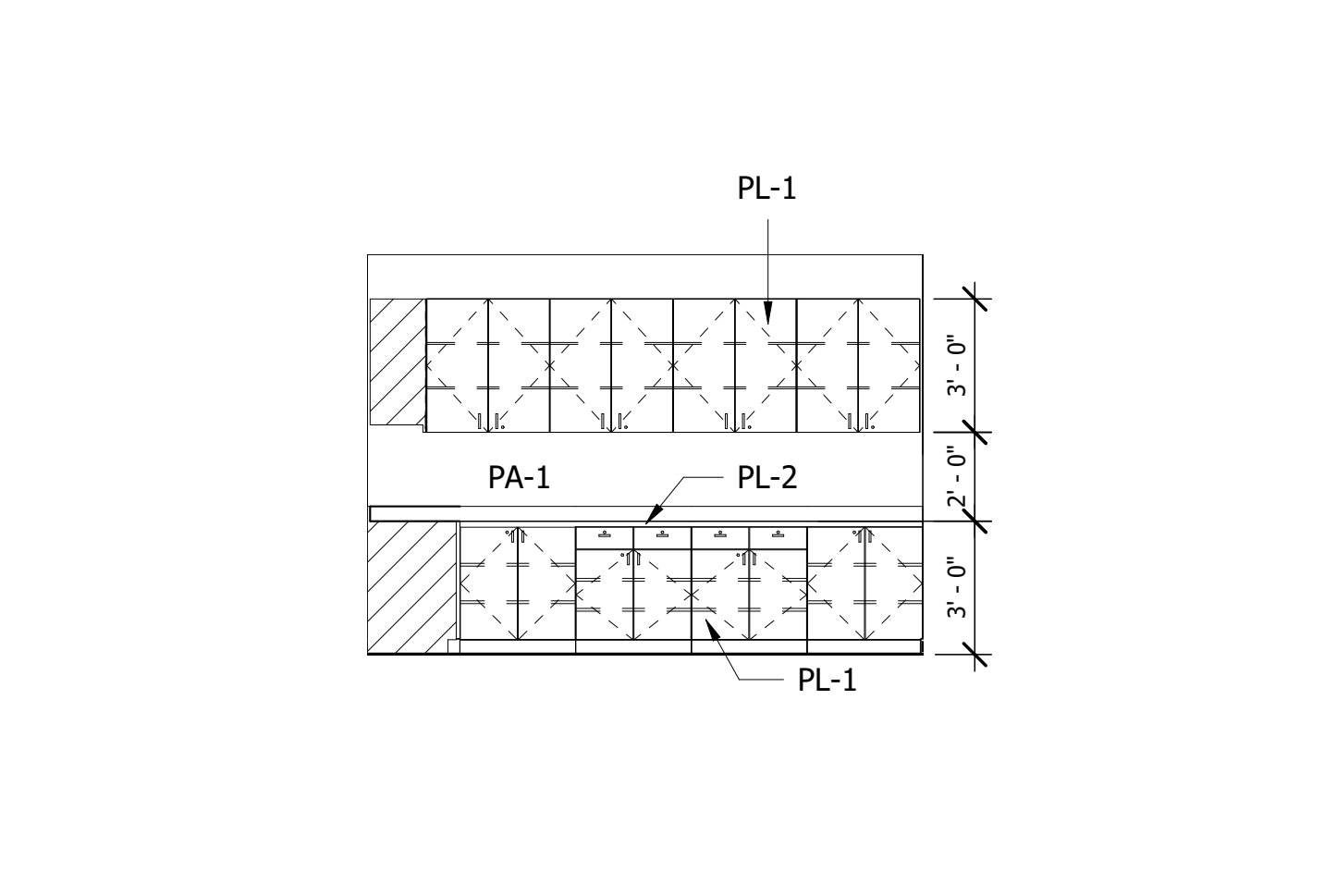
10 741 BREAKROOM - SOUTH
1/4" = 1'-0"



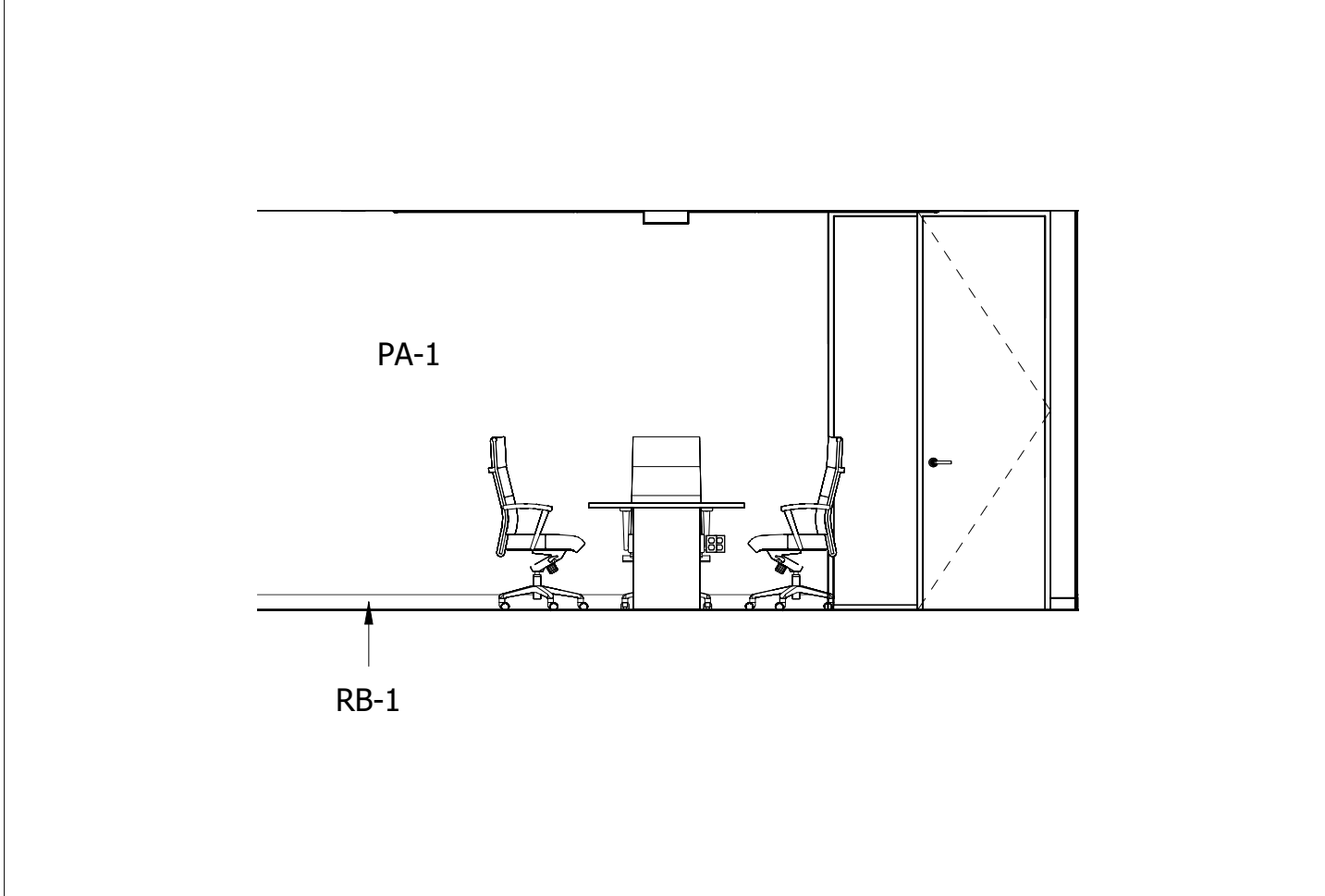
9 741 BREAKROOM - EAST
1/4" = 1'-0"



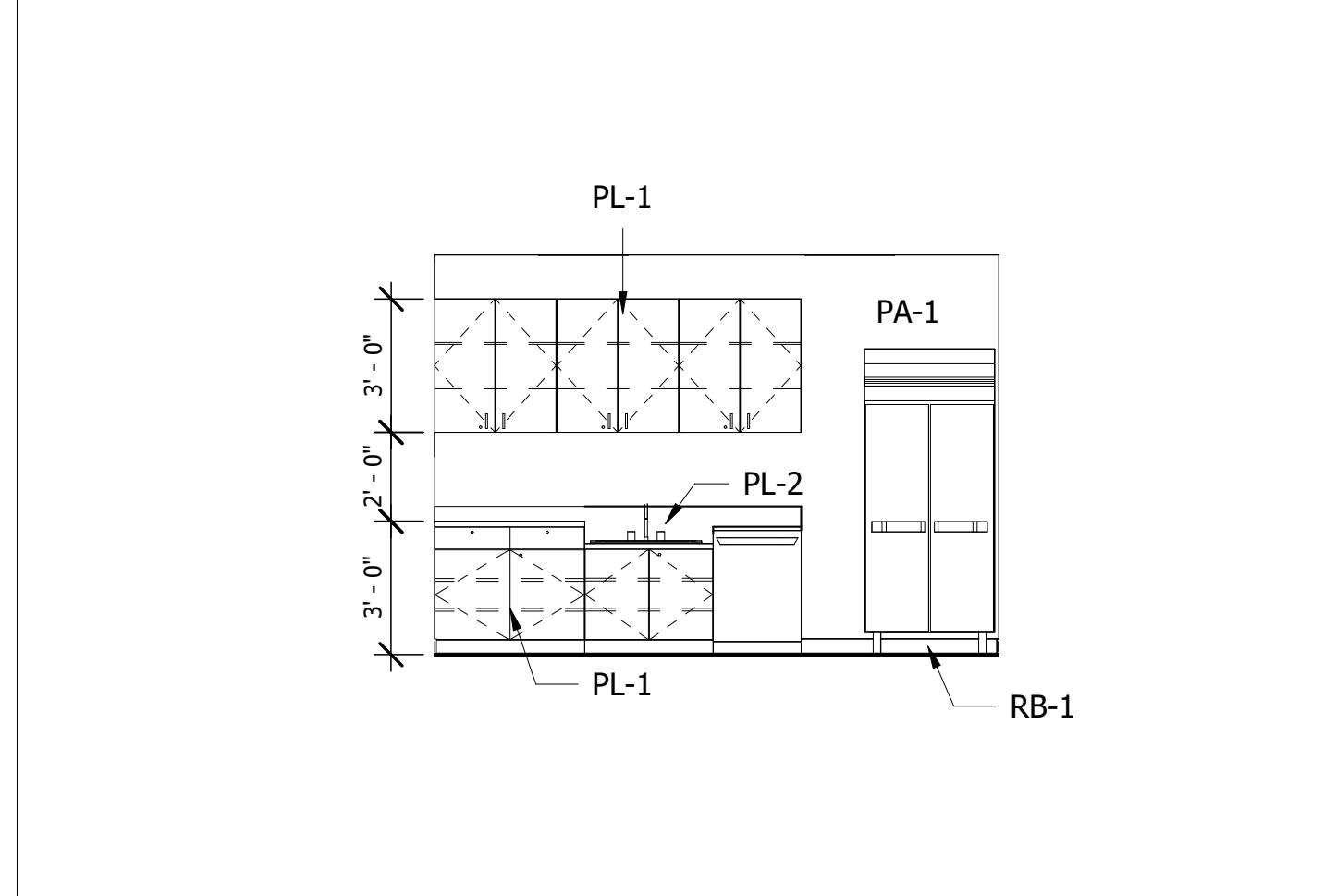
8 742 WORK ROOM - NORTH
1/4" = 1'-0"



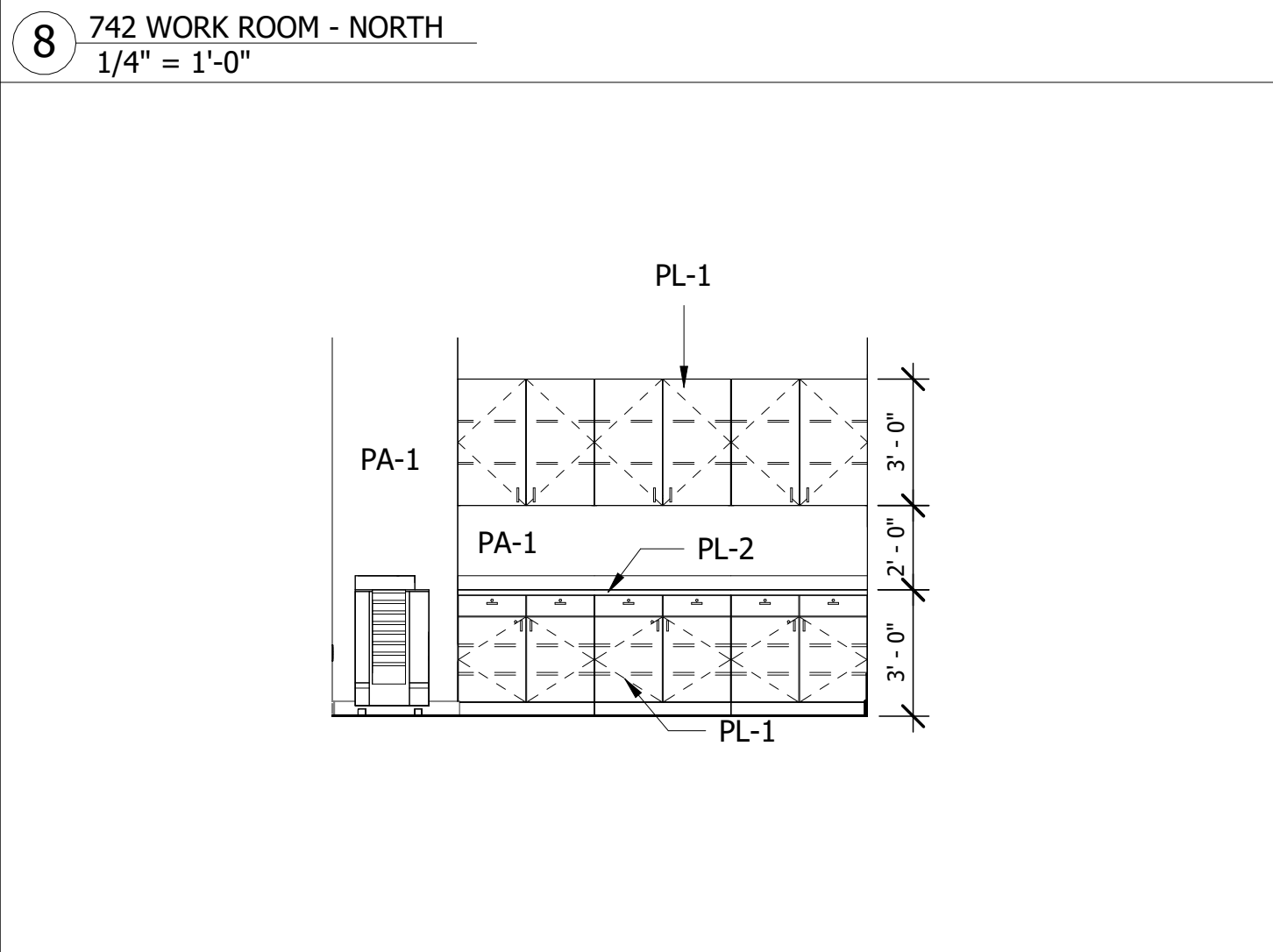
7 742 WORK ROOM - EAST
1/4" = 1'-0"



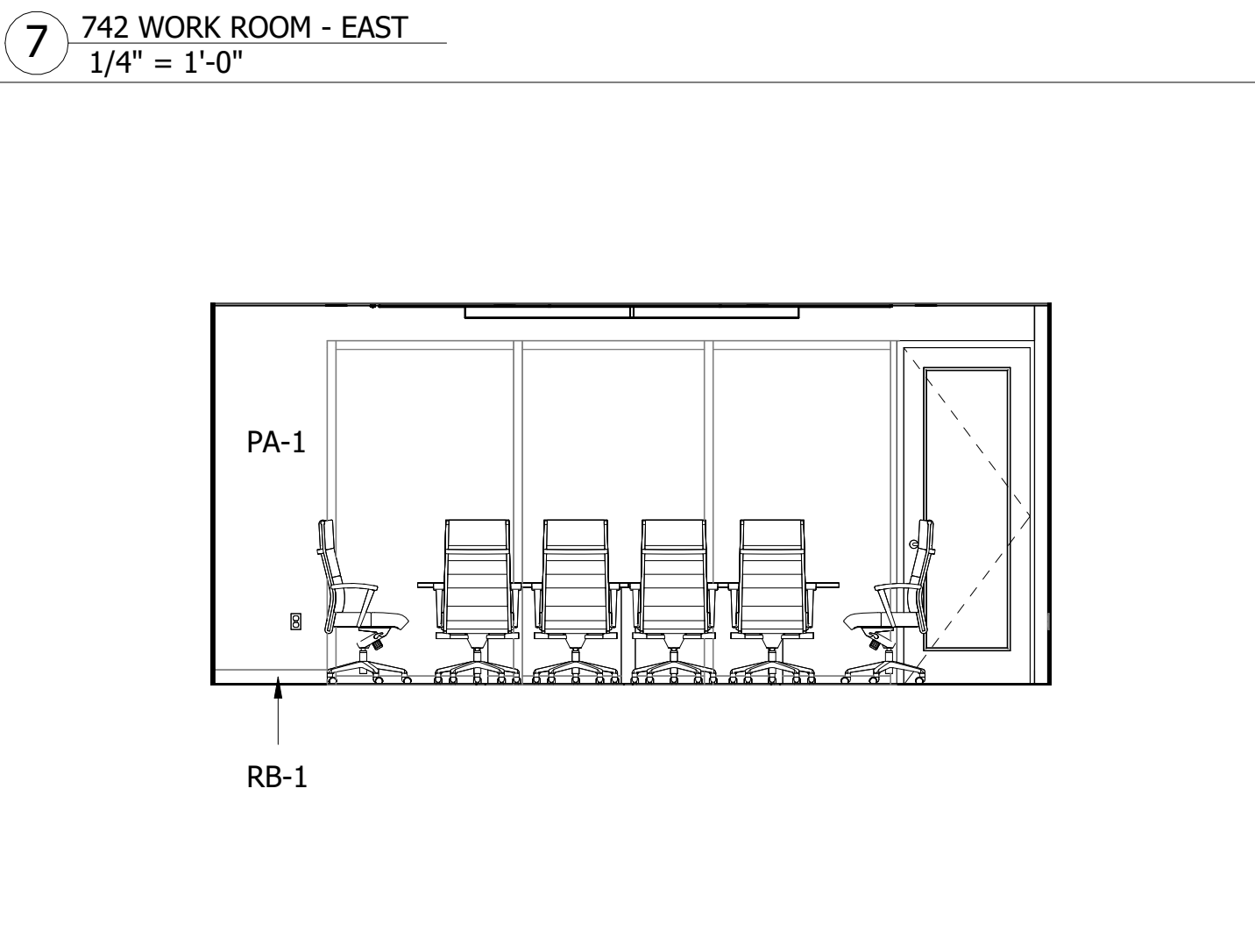
6 749 CONFERENCE - SOUTH
1/4" = 1'-0"



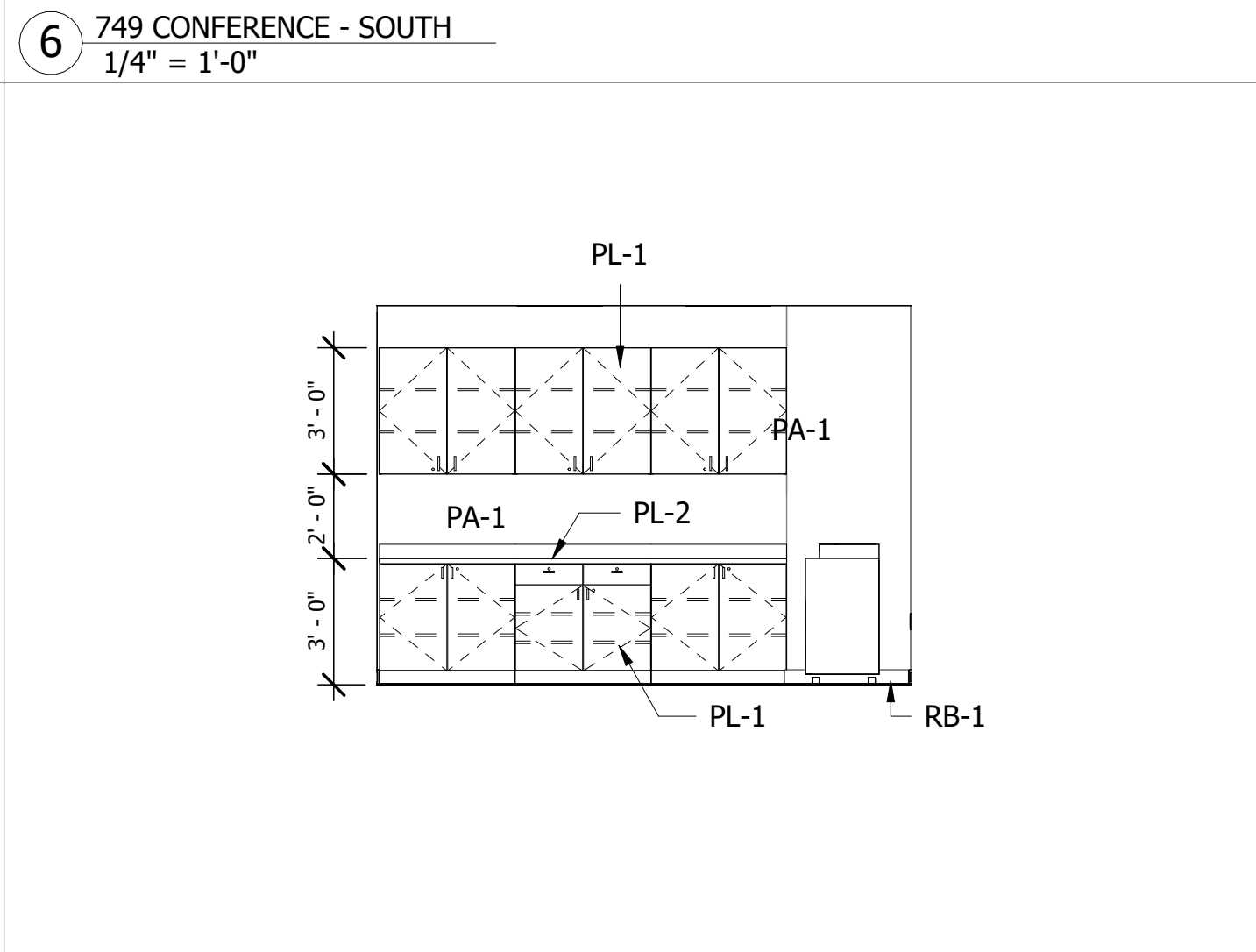
5 752 COFFEE BAR - EAST
1/4" = 1'-0"



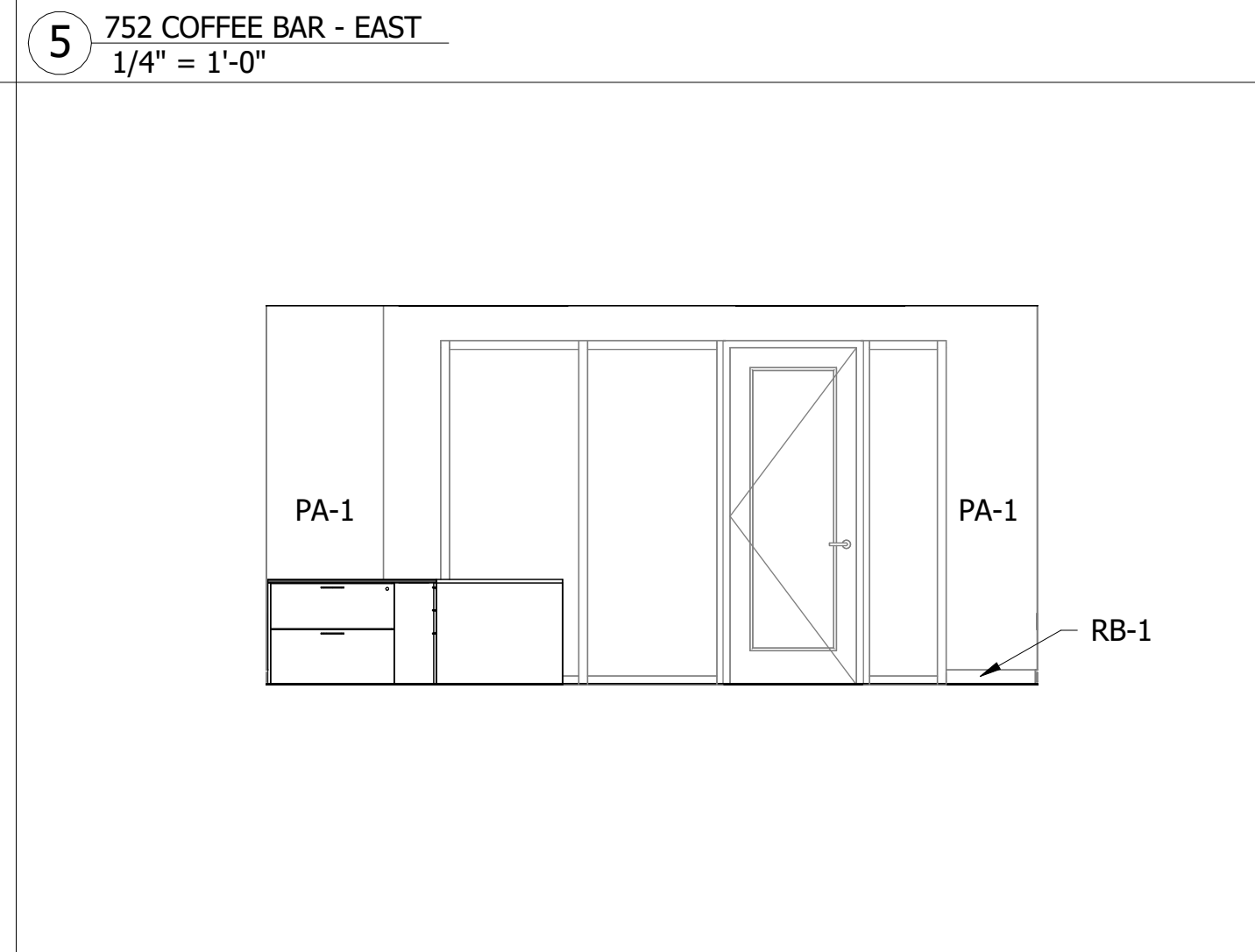
4 748 WORK ROOM - WEST
1/4" = 1'-0"



3 708 CONFERENCE - SOUTH
1/4" = 1'-0"



2 704 WORK ROOM - EAST
1/4" = 1'-0"



1 701 MAIN ENTRY - SOUTH
1/4" = 1'-0"

\\SLBERV\Share\Prosperity Bank - Steering Plaza 6th & 7th\Drawings\Design Development\Prosperity Bank - Steering Plaza_Central.mxd