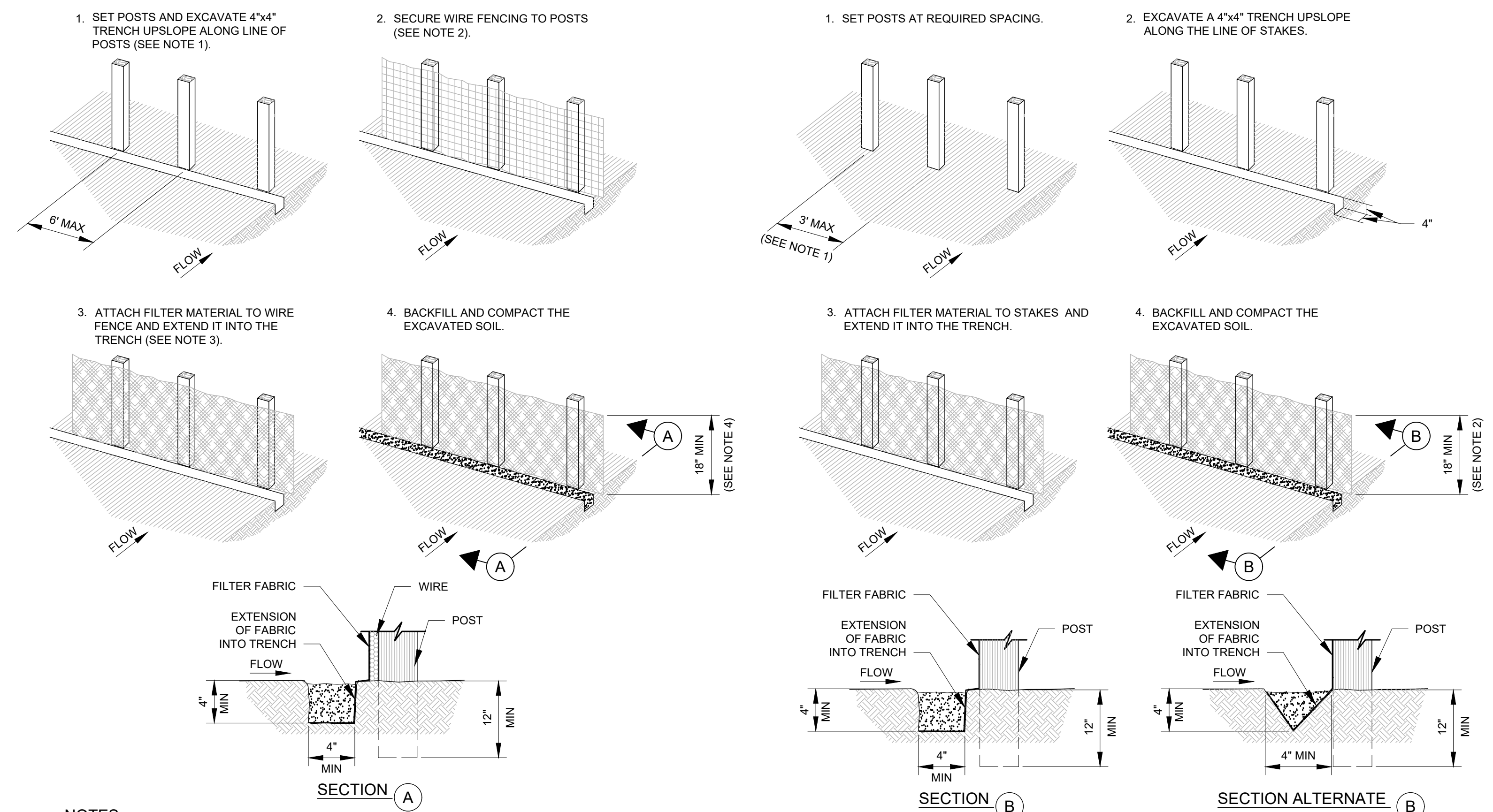
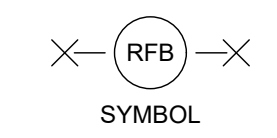


User Name: kender  
 Date: 03 Mar 2026 - 2:48pm  
 Path Name: C:\Users\kender\OneDrive - proeconsulting.com\OneDrive - proeconsulting.com\Projects\1018 - SU Group\0017 - Neches FGD\_Silsbee\_V2\_CAD\Private\C9 STORM WATER POLLUTION PREVENTION MAP DETAILS.dwg

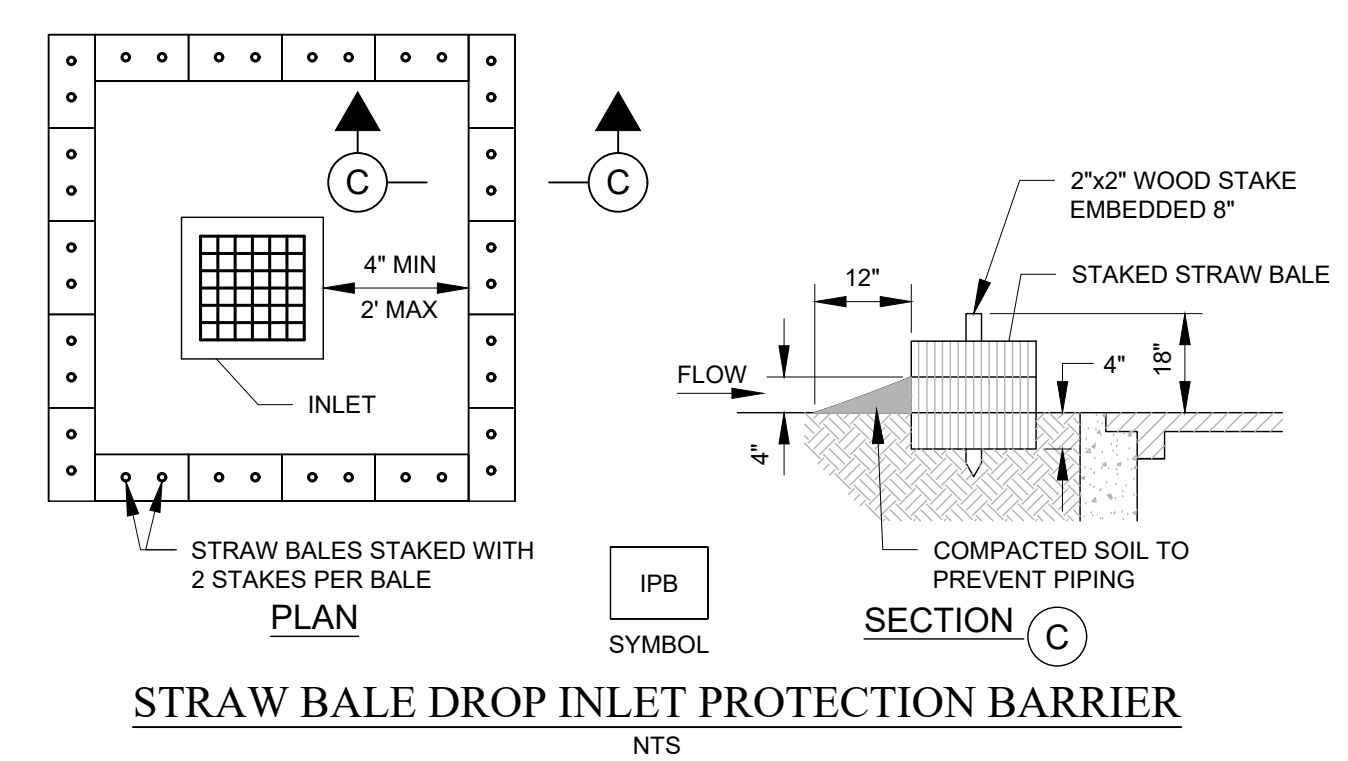


**NOTES**

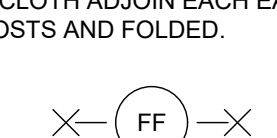
1. SET 2 INCH BY 2 INCH WOODEN STAKES SPACE A MAX OF 6 FEET APART AND EMBEDDED A MIN OF 12 INCHES.
2. WOVEN WIRE FENCE TO BE FASTENED SECURELY TO FENCE POSTS WITH STAPLES.
3. FILTER CLOTH TO BE FASTENED SECURELY TO WOVEN WIRE FENCE, WITH TIES SPACED EVERY 24 INCHES AT TOP AND MIDSECTION.
4. MINIMUM HEIGHT OF FILTER SHOULD BE 18 INCHES AND A MAXIMUM OF 36 INCHES ABOVE NATURAL GROUND.
5. WHEN TWO SECTIONS OF FILTER CLOTH ADJOIN EACH OTHER THEY SHALL BE OVERLAPPED 6 INCHES AT THE POSTS AND FOLDED.



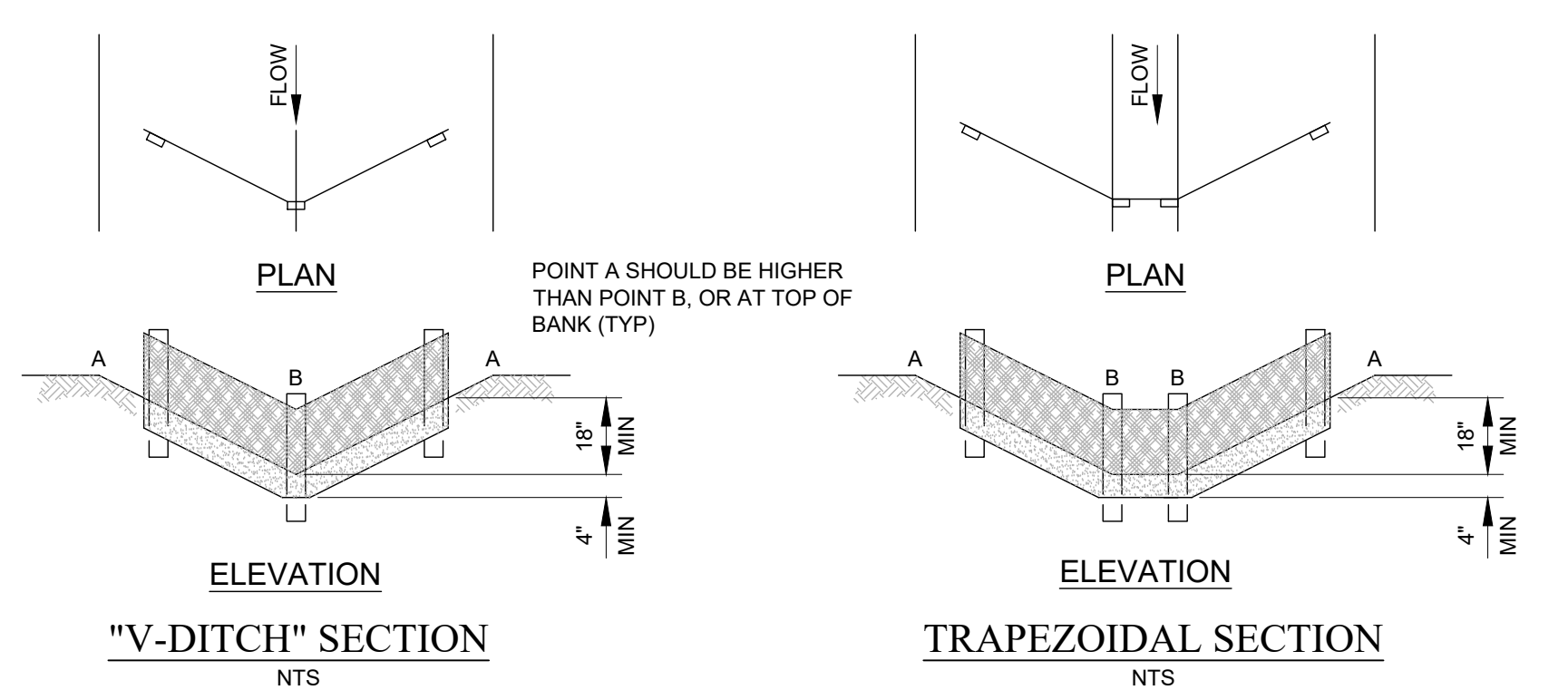
**REINFORCED FILTER FABRIC BARRIER**  
NTS



**STRAW BALE DROP INLET PROTECTION BARRIER**  
NTS

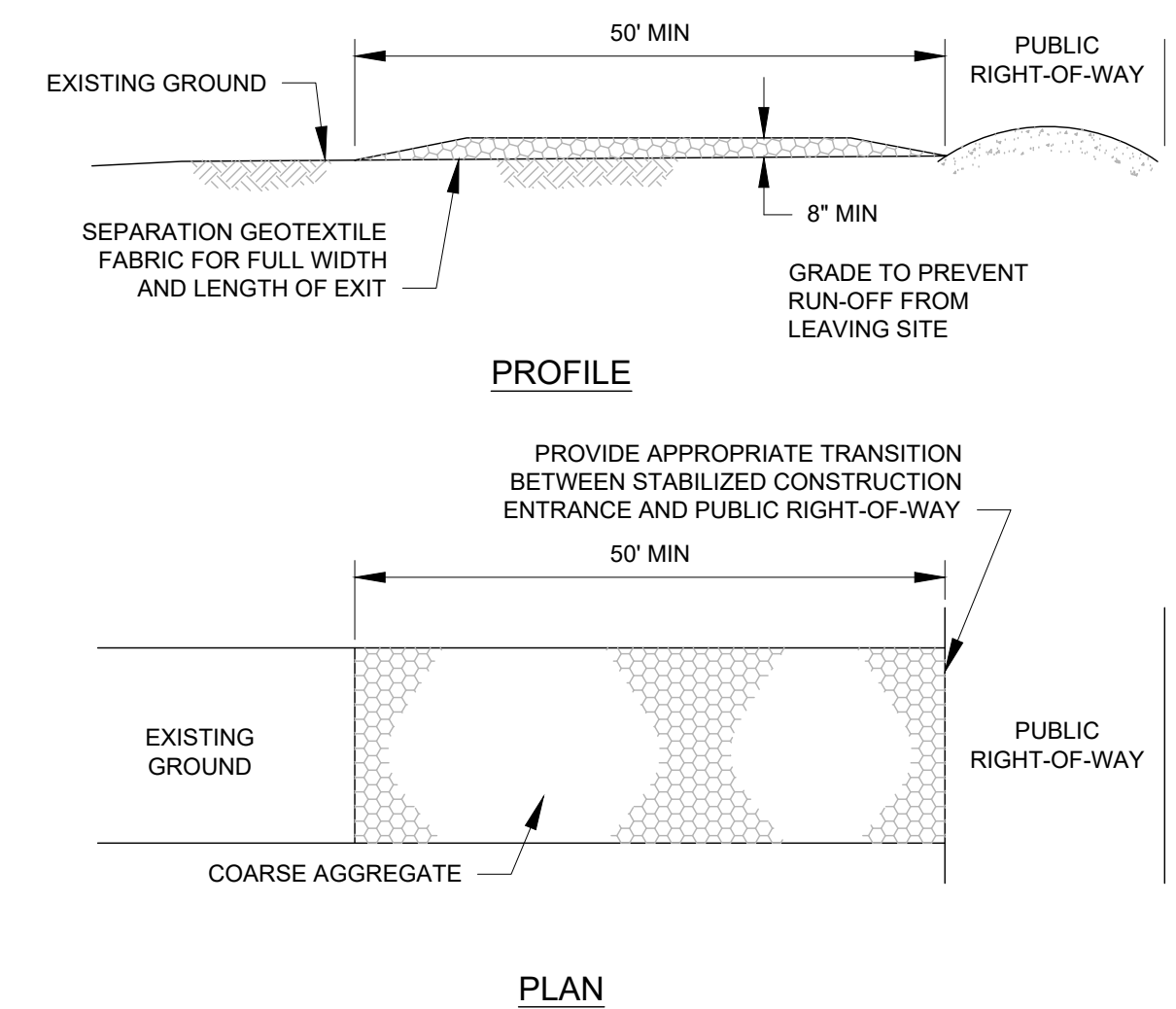


**FILTER FABRIC FENCE**  
NTS



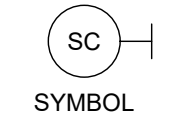
**"V-DITCH" SECTION**  
NTS

**TRAPEZOIDAL SECTION**  
NTS

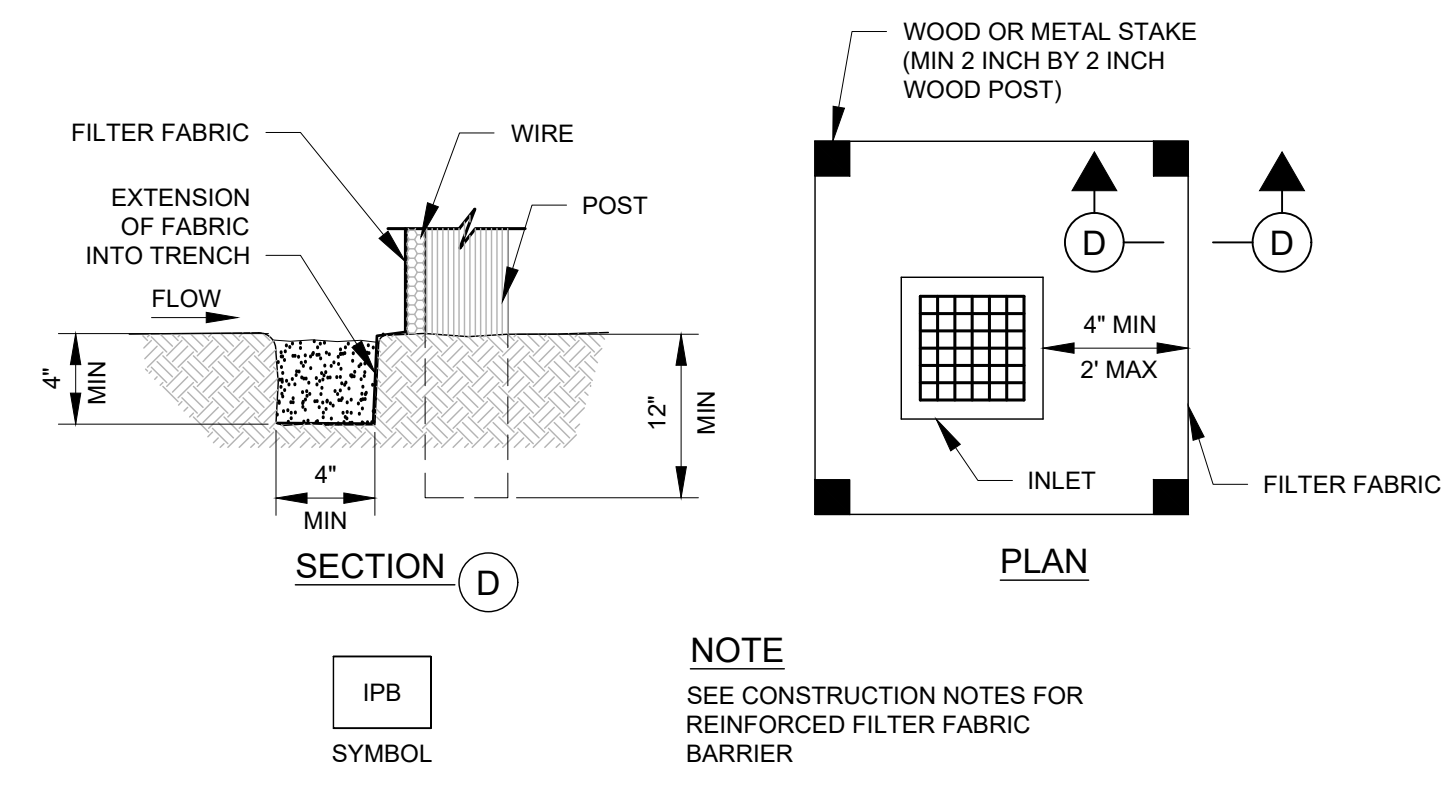


**NOTES**

1. LENGTH SHALL BE AS SHOWN ON THE CONSTRUCTION DRAWINGS, BUT NOT LESS THAN 50 FEET.
2. THICKNESS SHALL BE NOT LESS THAN 8 INCHES.
3. WIDTH SHALL BE NOT LESS FULL WIDTH OF ALL POINTS OF INGRESS OR EGRESS.
4. STABILIZATION FOR OTHER AREAS SHALL HAVE THE SAME AGGREGATE THICKNESS AND WIDTH REQUIREMENTS AS THE STABILIZED CONSTRUCTION EXIT, UNLESS OTHERWISE SHOWN ON THE CONSTRUCTION DRAWINGS.
5. STABILIZED AREA MAY BE WIDENED OR LENGTHENED TO ACCOMMODATE A TRUCK WASHING AREA. AN OUTLET SEDIMENT TRAP MUST BE PROVIDED FOR THE TRUCK WASHING AREA.
6. STABILIZED CONSTRUCTION EXIT SHALL BE MAINTAINED FREE OF SEDIMENT FOR THE DURATION OF THE PROJECT.



**STABILIZED CONSTRUCTION EXIT**  
NTS

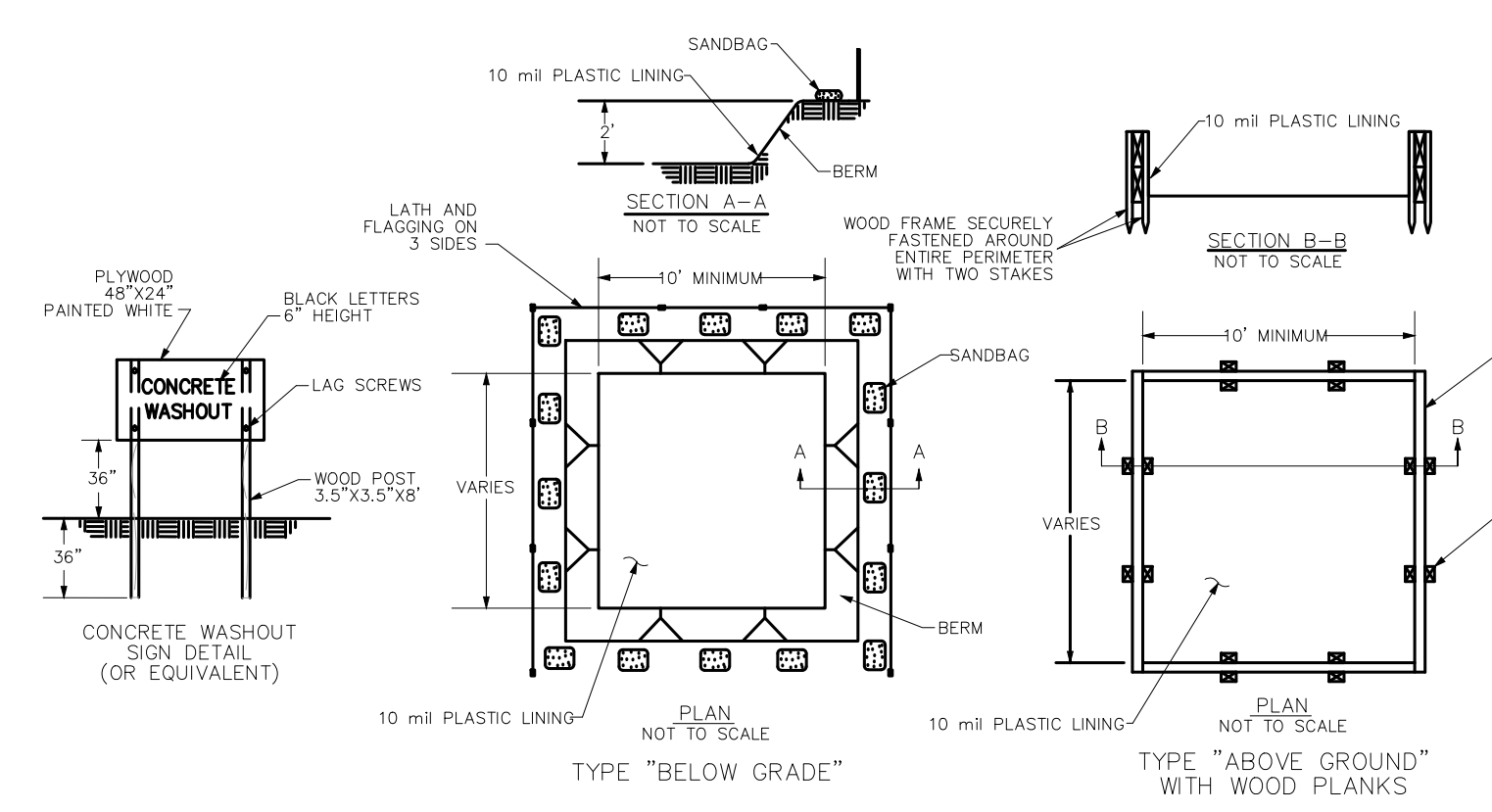


**SILT FENCE DROP INLET PROTECTION BARRIER**  
NTS

**CONTRACTOR NOTES**

1. CONTRACTOR IS RESPONSIBLE FOR DEVELOPING, IMPLEMENTING AND ADHERING TO THE CONTRACTOR DEVELOPED STORM WATER POLLUTION PREVENTION PLAN (SWPPP).
2. CONTRACTOR SHALL PREPARE ALL NOTICE OF INTENT FORMS FOR THE WORK AND OBTAIN THE NECESSARY CERTIFICATES AND SIGNATURES FROM THE OWNER, APPLICABLE SUBCONTRACTORS AND OTHERS AS REQUIRED.

4-2012



**NOTES:**

1. CONCRETE WASHOUT FACILITIES ARE TO BE LOCATED AT LEAST 50' FROM STORM DRAIN INLETS, OPEN DRAINAGE FACILITIES, OR WATER BODIES.
2. A CONCRETE WASHOUT SIGN SHALL BE INSTALLED WITHIN 30' OF THE CONCRETE WASHOUT FACILITY.
3. ONCE 75% OF THE ORIGINAL VOLUME OF THE WASHOUT PIT IS FILLED OR IF THE LINER IS TORN, THE MATERIAL MUST BE REMOVED AND PROPERLY DISPOSED OF ONCE IT IS COMPLETELY HARDENED. ONCE THE HARDENED CONCRETE IS REMOVED, THE LINER MUST BE REPLACED (IF SUITABLE). A NEW PIT MUST BE CONSTRUCTED IF THE ORIGINAL STRUCTURE IS NO LONGER SUITABLE.
4. ONCE THE PIT IS NO LONGER NEEDED, ENSURE ALL WASHOUT MATERIAL HAS COMPLETELY HARDENED, THEN REMOVE AND PROPERLY DISPOSE OF ALL MATERIALS.

**CONCRETE TRUCK WASHOUT**  
NTS

**PRO CONSULTING**  
 1334 Brittmoore Road  
 Suite # 2808  
 Houston, TX 77043  
 Firm License F-21665  
 www.proeconsulting.com

Justin A. Schrader

DATE	REVISION

CONSTRUCTION PLANS FOR  
**NECHES FEDERAL CREDIT UNION - SILSBEE ITM**  
 (PRIVATE ON-SITE)  
 PAVING, & DRAINAGE FACILITIES

135 HWY 327 E.,  
 SILSBEE, TEXAS 77656

**STORM WATER POLLUTION PREVENTION MAP DETAILS**

PRO-E PROJECT NO.: 1018-0017	
SUBMITTED:	DESIGNED BY: KL
SCALE: N/A	DRAWN BY: SG
DATE: MARCH, 2026	SHEET NO. C9 OF C9
SURVEYED BY: SOUTEX SURVEYORS & ENGINEERS	CITY DWG NO.:

PRIVATE PLANS - NECHES FEDERAL CREDIT UNION - SILSBEE ITM - 135 HWY 327 E., SILSBEE, TEXAS 77656 - 1018-0017