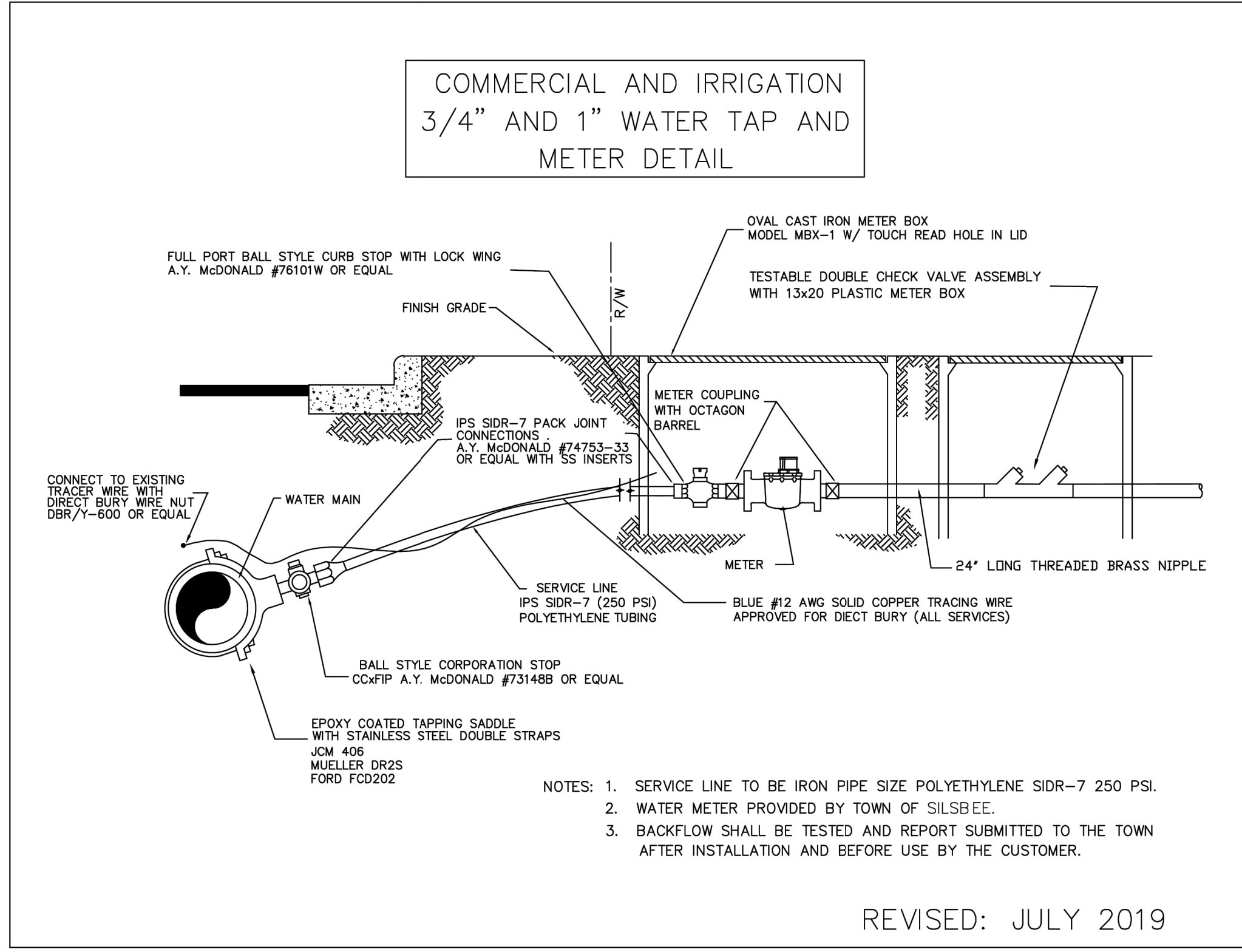
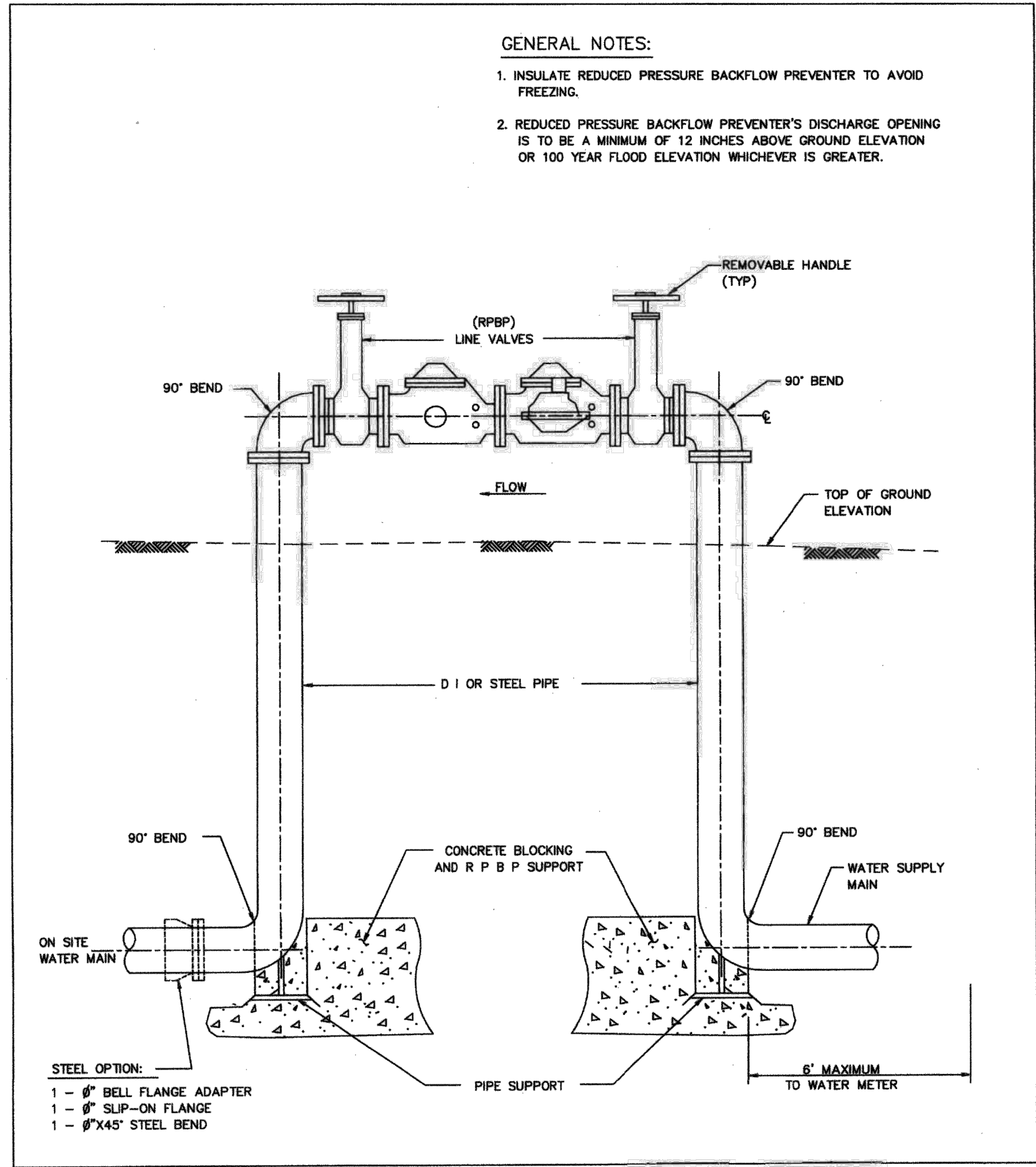


Date: Mar 02, 2026 2:35pm
 User: Name: kender
 Path: C:\Users\kender\OneDrive - proeconsulting\Projects\1018 - SU Group\0016 - Neches FCD\Private\09 CONSTRUCTION DETAILS.dwg



PRO CONSULTING
 1334 Britton Road
 Suite # 2808
 Houston, TX 77043
 Firm License F-21665
 www.proeconsulting.com



DATE	REVISION

CONSTRUCTION PLANS FOR
**NECHES FEDERAL CREDIT UNION -
 LITTLE CYPRESS ITM**
 (PRIVATE ON-SITE)
 PAVING, & DRAINAGE FACILITIES

7125 HWY 87 N,
 ORANGE, TEXAS 77632

CONSTRUCTION DETAILS

SUBMITTED: SCALE: N/A DATE: MARCH, 2026 SURVEYED BY: SOUTEX SURVEYORS & ENGINEERS	DESIGNED BY: KH DRAWN BY: PB SHEET NO. C9 OF C9 CITY DWG NO.:
--	--

PRIVATE PLANS - NECHES FEDERAL CREDIT UNION - LITTLE CYPRESS ITM; 7125 HWY 87 N, ORANGE, TEXAS 77632