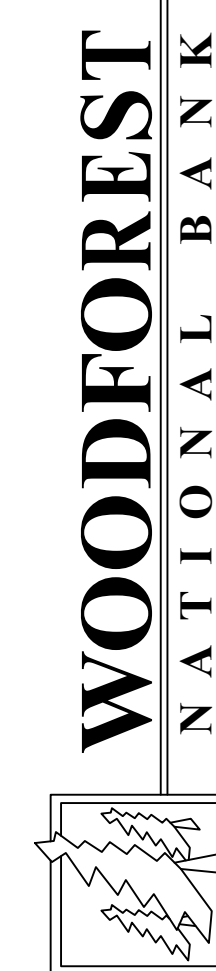




ARCHITECTURE PLANNING INTERIOR DESIGN

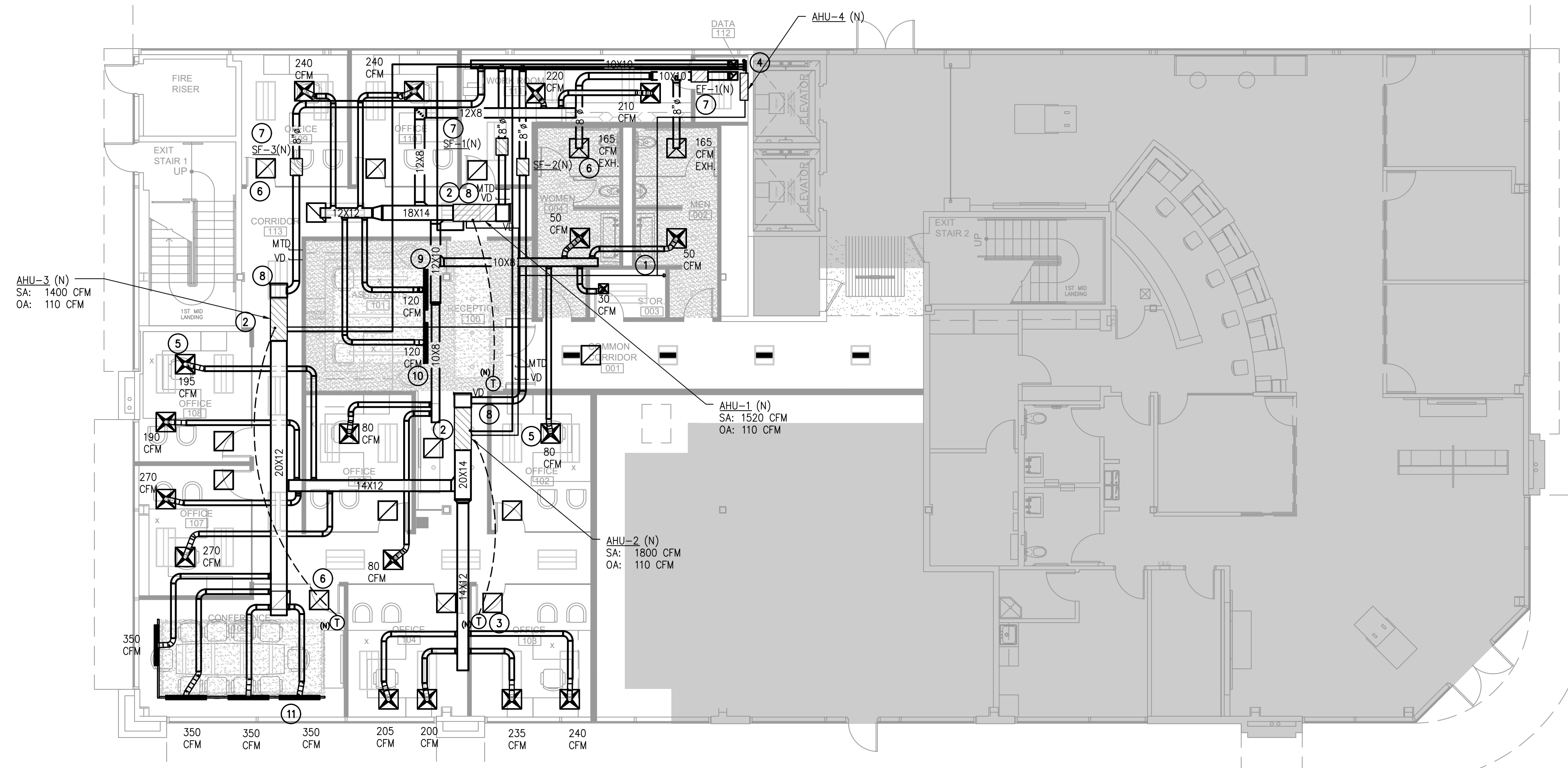
15810 PARK TEN PLACE, SUITE 300
HOUSTON, TEXAS 77084
713-465-4650
www.sligroup.com

© COPYRIGHT



400 W. DAVIS
CONROE, TX 77301

E/B/E Project Number : 25026



01 MECHANICAL PLAN - LEVEL 01

SCALE: 1/8"=1'-0"

MECHANICAL KEYED NOTES:

- 1 PROVIDE CONDENSATE PUMP AND ROUTE PUMPED 3/4" CONDENSATE DRAIN LINE AT 1/8" SLOPE PER FOOT TO THE FLOOR SINK IN THE STORAGE ROOM.
- 2 PROVIDE NEW AHU ABOVE ACCESSIBLE CEILING. FIELD VERIFY AND COORDINATE EXACT LOCATION WITH BUILDING ENGINEER AND EXISTING CONSTRAINTS. REFER TO SCHEDULE AND DETAIL FOR ADDITIONAL INFORMATION. TYPICAL.
- 3 PROVIDE NEW THERMOSTAT AT LOCATION INDICATED. CONTRACTOR TO FIELD VERIFY AND COORDINATE WITH BUILDING ENGINEER FOR EXACT THERMOSTAT AND LOCATION. TYPICAL.
- 4 ROUTE NEW REFRIGERANT PIPING THROUGH ROOF WITH ROOF JACK VIA CHASE. FOLLOW MANUFACTURER'S GUIDELINE FOR PROPERLY SIZING REFRIGERANT PIPES. PROTECT PIPING WITH 1" INSULATION. PROTECT OUTDOOR PIPING WITH ALUMINUM JACKET.
- 5 PROVIDE NEW 24" X 24" SUPPLY AIR DEVICE AT LOCATION INDICATED. BALANCE TO CFM INDICATED. SEE SCHEDULE AND DETAILS. TYPICAL.
- 6 PROVIDE NEW 24" X 24" RETURN/EXHAUST AIR GRILLE AT LOCATION INDICATED. SEE SCHEDULE AND DETAILS. TYPICAL.
- 7 PROVIDE NEW INLINE SUPPLY/EXHAUST FAN. ROUTE 10"X10" EXHAUST DUCT THROUGH ROOF. ENSURE EXHAUST OUTLET IS A MINIMUM OF 10 FEET FROM NEAREST FRESH AIR INTAKE. BALANCE TO CFM INDICATED. SEE SCHEDULE AND DETAIL.
- 8 PROVIDE A MIXING BOX ALONG WITH THE MOTORIZED DAMPER (MTD) FOR OA INTAKE. BALANCE OA TO THE CFM INDICATED ON PLAN. MTD WILL CLOSE WHEN THE ECU IS DE-ENERGIZED.
- 9 PROVIDE NEW WHITE "FLOW BAR" SUPPLY SLOT DIFFUSER AT LOCATION INDICATED. COORDINATE WITH ARCHITECT FOR FINAL LOCATION AND DETAIL. BALANCE TO CFM INDICATED. SEE SCHEDULE AND DETAIL. TYPICAL.
- 10 PROVIDE NEW CONTINUOUS PERIMETER LINEAR SLOT FOR FLOW BAR SLOT DIFFUSER. ANY UNUSED SECTION OF SLOT SHALL BE COVERED WITH RETURN AIR HOOD WITH LIGHT SHIELD. COORDINATE WITH ARCHITECT AND REFLECTED CEILING PLAN. TYPICAL.
- 11 PROVIDE NEW PERIMETER SLOT DIFFUSER AT THE CONFERENCE ROOM. ANY UNUSED SECTION OF SLOT SHALL BE COVERED WITH RETURN AIR HOOD WITH LIGHT SHIELD. COORDINATE WITH ARCHITECT AND REFLECTED CEILING PLAN. TYPICAL.

ISSUED FOR CLIENT APPROVAL	DATE
ISSUED FOR BIDDING	
ISSUED FOR PERMIT	02/13/2026
ISSUED FOR CONSTRUCTION	

REVISIONS		
MARK	DESCRIPTION	DATE
	90% REVIEW SET	2026/02/06
	ISSUED FOR PERMIT	2026/02/13

The information, ideas, designs, details, layouts, techniques, features, arrangements, plans, sequences, dimensions, allowances, tolerances, conceptions, specifications, intentions, technology or embodiments, as illustrated, arranged, displayed, noted, recorded, indicated, represented, disclosed, evidenced, detailed or otherwise reduced to tangible form herein, either expressly, inherently or by implication, are the confidential and proprietary information of SLI Design, Inc., and shall not be used for any purpose other than the specific project or undertaking identified on the drawing title block or legend for which they are and have been prepared by SLI Design, Inc. Any other reproduction, disclosure or use of any portion of the confidential and proprietary information of SLI Design, Inc., shall be a breach of the obligation of confidence created by the acceptance of this drawing from SLI Design, Inc. for a specific project or contract. Any copying, duplicating, reproducing, utilization, alteration, modification, revision or change to this drawing, is expressly prohibited unless done with the prior written consent or approval of SLI Design, Inc., and shall not be undertaken without receipt of such prior written approval. This drawing is loaned by SLI Design, Inc., for the limited purpose of complying with a specific contract. The drawing remains the property of SLI Design, Inc., and shall be returned upon request or completion of the contract, unless specifically authorized by contract, under which it was loaned.



SCALE: 1/8"=1'-0"

EIB/E Mechanical
Electrical
Plumbing
CONSULTING ENGINEERS

12603 Southwest Frwy, Ste 170, Stafford, Tx 77477
Tel: (713) 840-0177 / Firm Reg. No: 5638

PM	MECH	ELEC	PLBG	CHCK
JG	THV	JG	BM	JG



DRAWING TITLE	MECHANICAL PLAN
SHEET NO.	M1.01