



ARCHITECTURE PLANNING INTERIOR DESIGN
 15810 PARK TEN PLACE, SUITE 300
 HOUSTON, TEXAS 77084
 713-465-4650
 www.sligroup.com

© COPYRIGHT



ACORN GOLF CLUB
 13825 Timber Forest Dr, Houston, TX 77044
 SUITE # 103

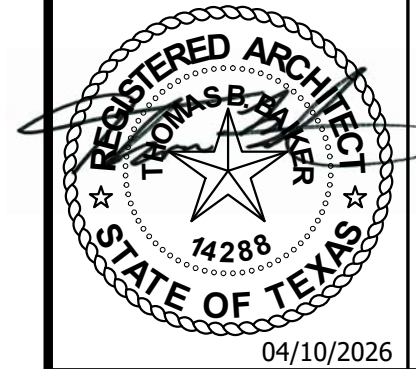
Project Number : 8982

ISSUED FOR CLIENT APPROVAL	DATE
ISSUED FOR BIDDING	03.30.2026
ISSUED FOR PERMIT	04.10.2026
ISSUED FOR CONSTRUCTION	

REVISIONS		
MARK	DESCRIPTION	DATE

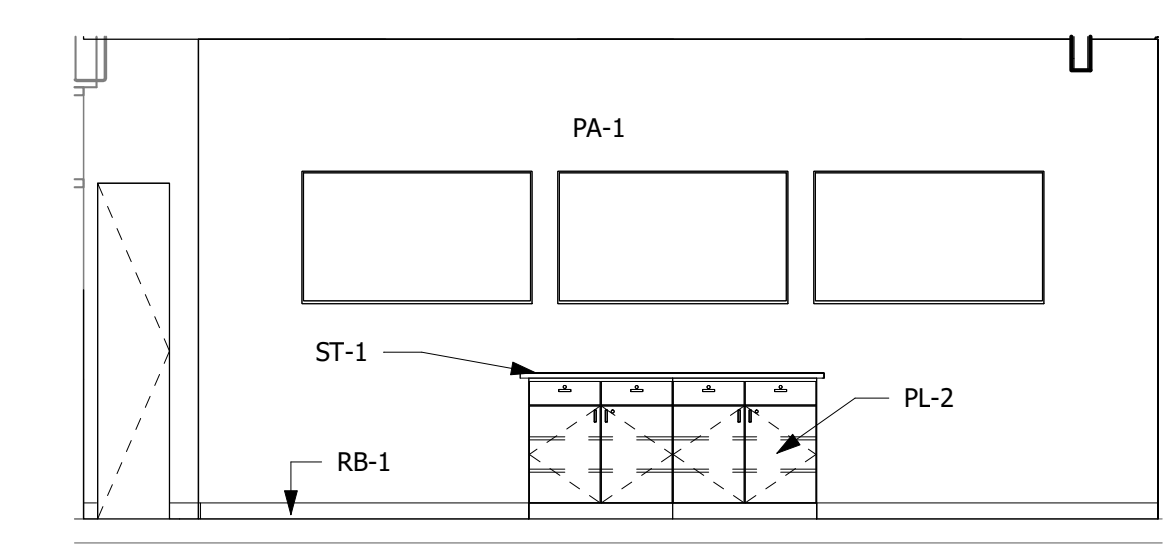
The information, ideas, designs, details, layouts, techniques, features, arrangements, plans, sequences, dimensions, allowances, tolerances, conceptions, specifications, intentions, technology or embodiments, as illustrated, arranged, displayed, noted, recorded, indicated, represented, disclosed, evidenced, detailed or otherwise reduced to tangible form herein, either expressly, inherently or by implication, are the confidential and proprietary information of SLI Design, Inc., and shall not be used for any purpose other than the specific project or undertaking identified on the drawing title block or legend for which they are and have been prepared by SLI Design, Inc. Any other reproduction, disclosure or use of any portion of the confidential and proprietary information of SLI Design, Inc., shall be a breach of the obligation of confidence created by the acceptance of this drawing from SLI Design, Inc. for a specific project or contract. Any copying, duplicating, reproducing, utilization, alteration, modification, revision or change to this drawing, is expressly prohibited unless done with the prior written consent or approval of SLI Design, Inc., and shall not be undertaken without receipt of such prior written approval. This drawing is loaned by SLI Design, Inc., for the limited purpose of complying with a specific contract. The drawing remains the property of SLI Design, Inc., and shall be returned upon request or completion of the contract, unless specifically authorized by contract, under which it was loaned.

PRINT DATE: 04/10/2026 11:07:59 AM

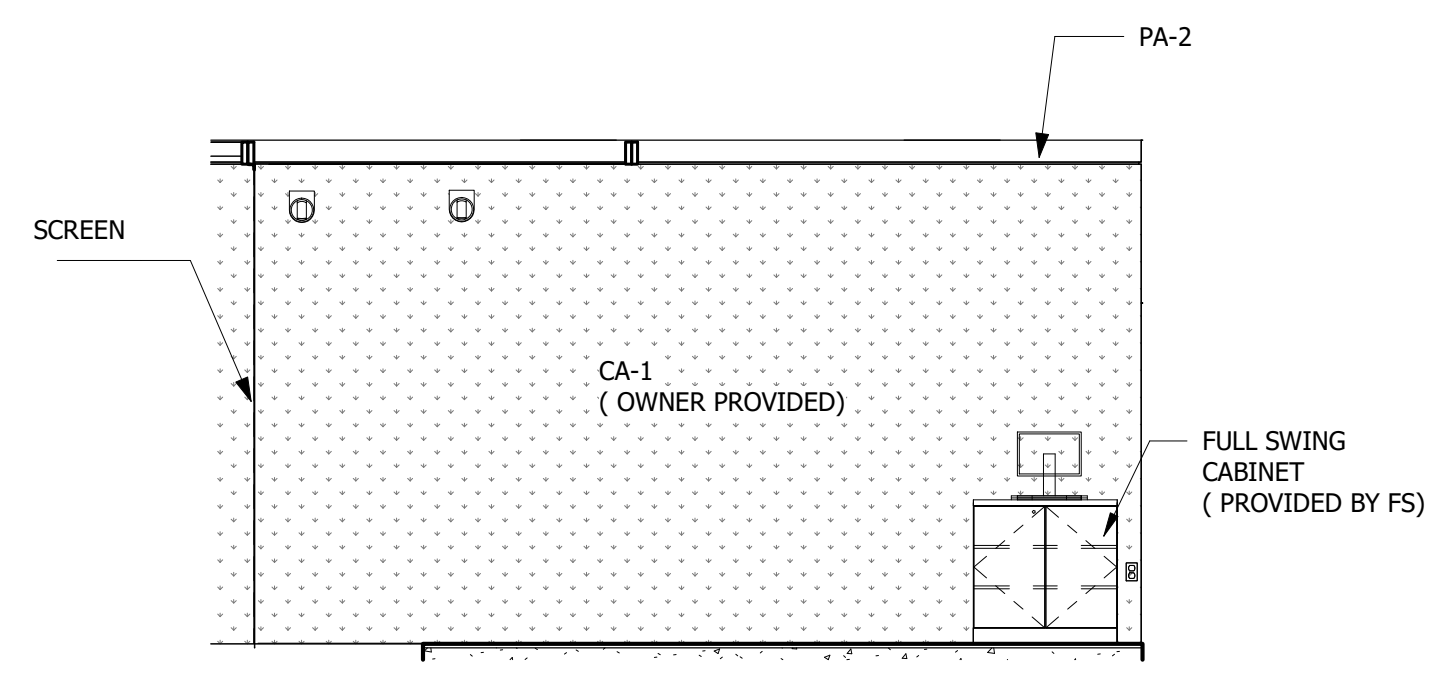


DRAWING TITLE	
INTERIOR ELEVATIONS	
DRAWN BY	RG
CHECKED BY	BL
APPROVED BY	TB

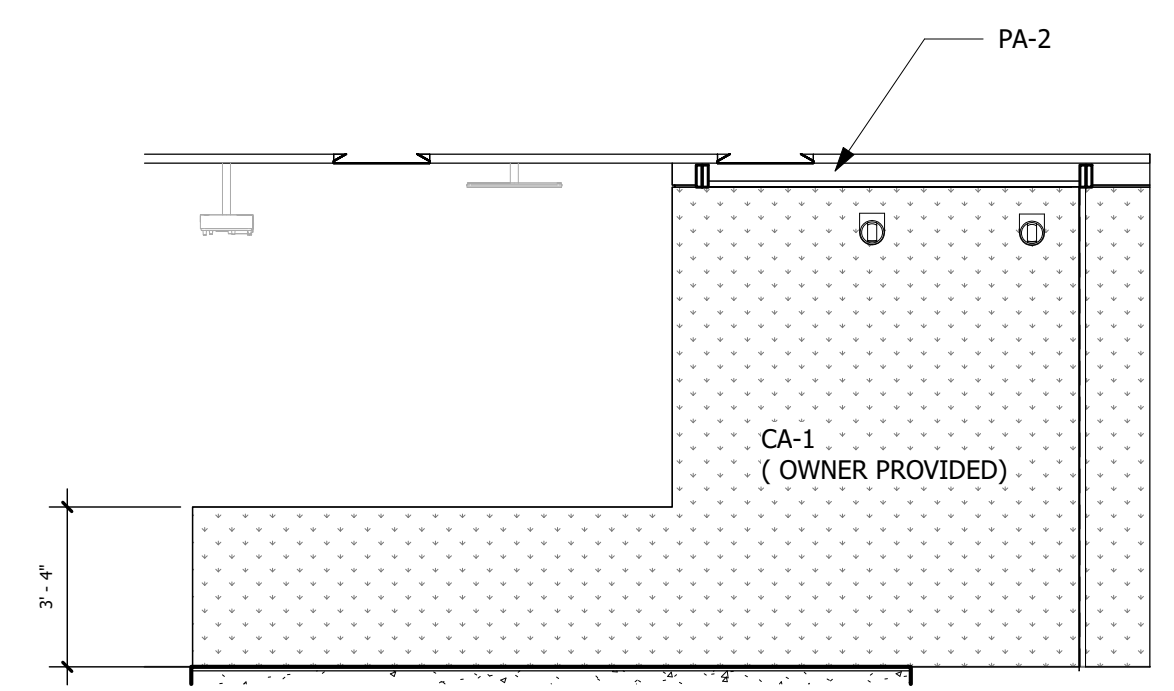
SHEET NO. A-10.00



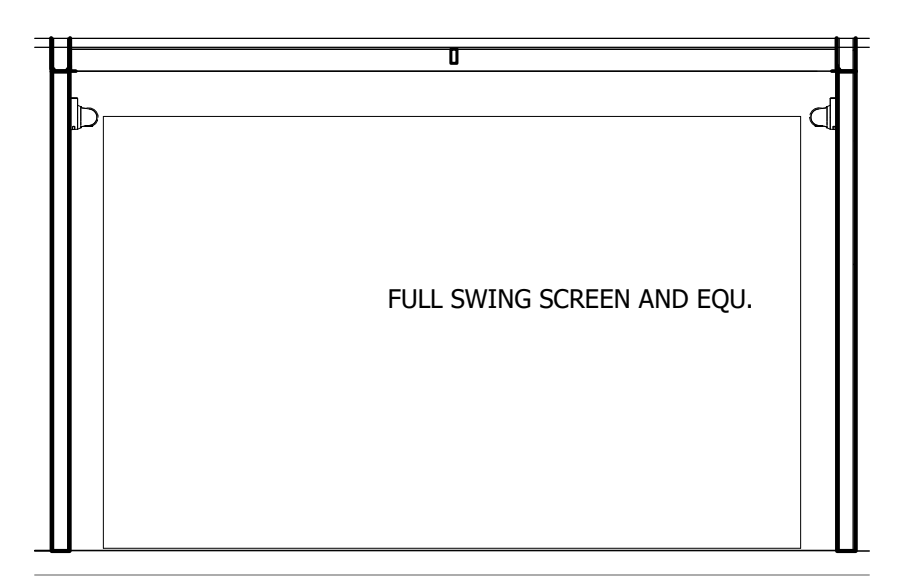
13 COMMON 100 - WEST
1/4" = 1'-0"



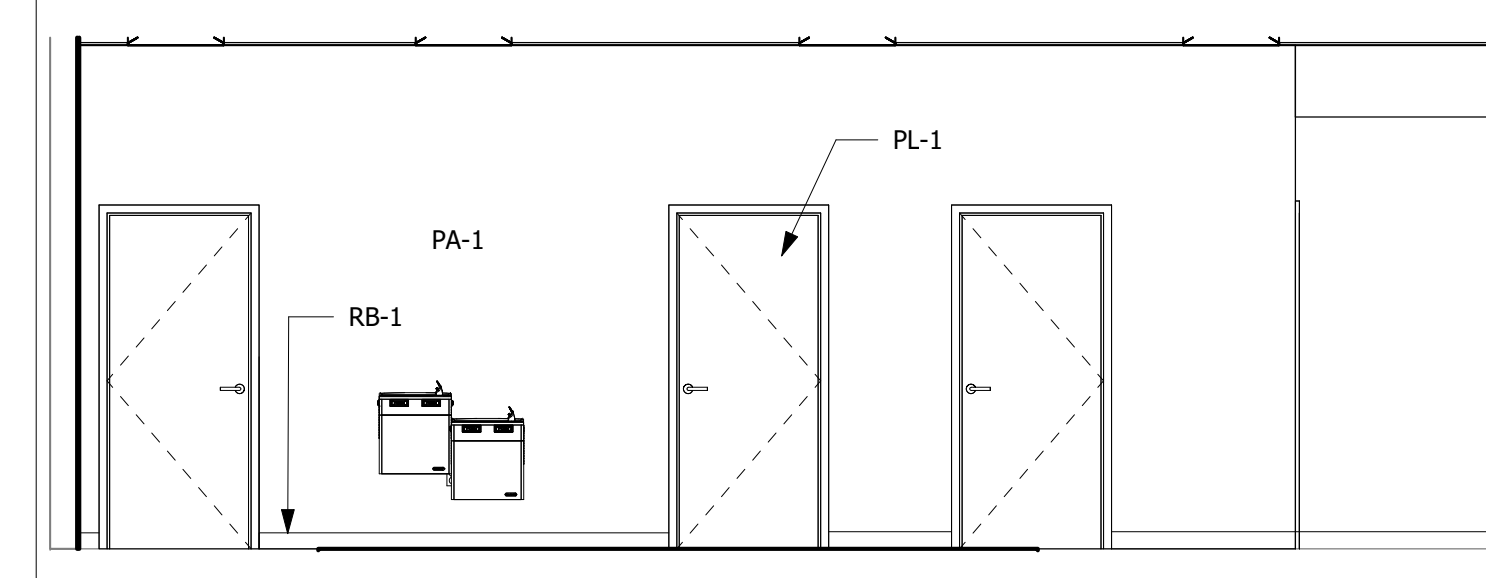
14 SIMULATOR 103 - EAST
1/4" = 1'-0"



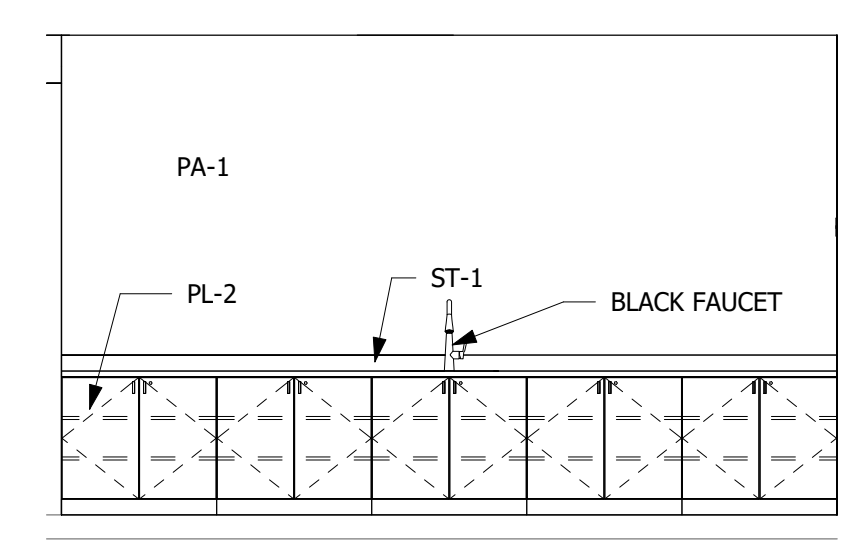
15 SIMULATOR 103 - WEST
1/4" = 1'-0"



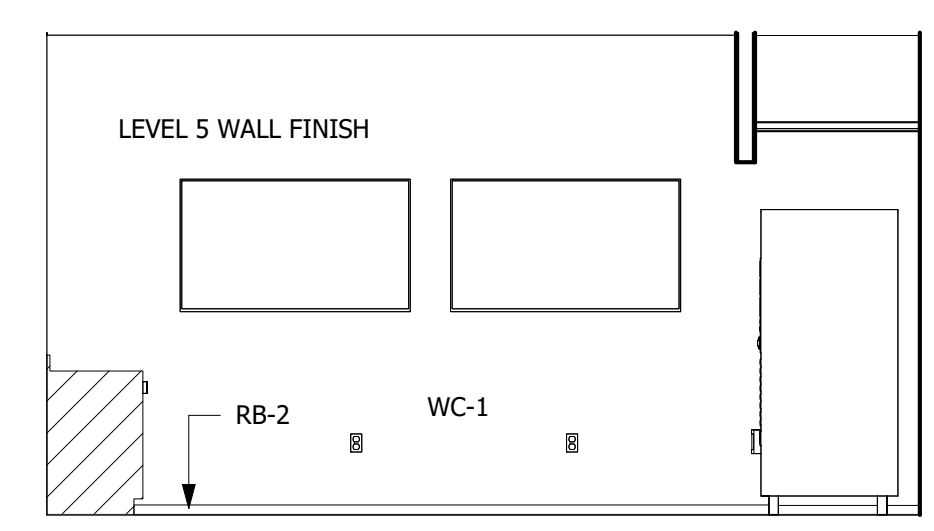
16 SIMULATOR 103 - NORTH
1/4" = 1'-0"



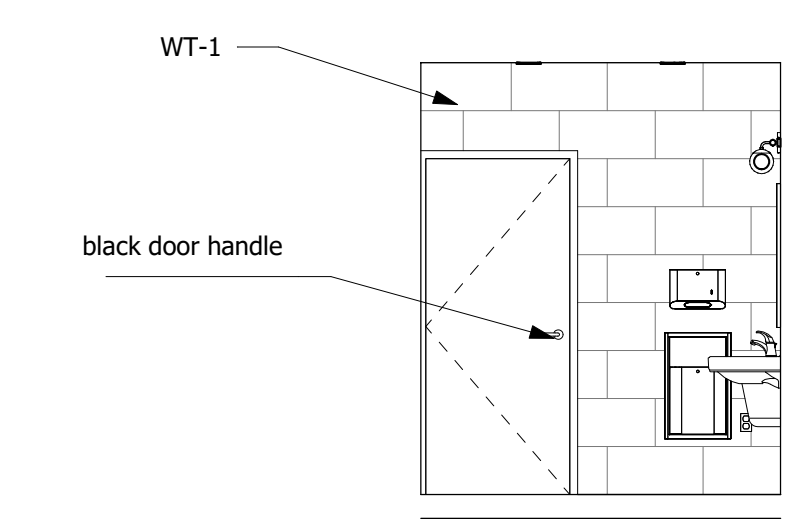
12 COMMON 100 - SOUTH
1/4" = 1'-0"



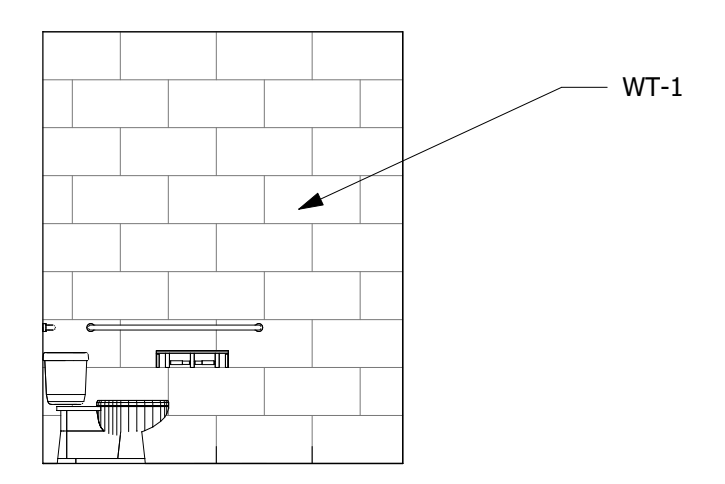
10 COMMON 100 - NORTH
1/4" = 1'-0"



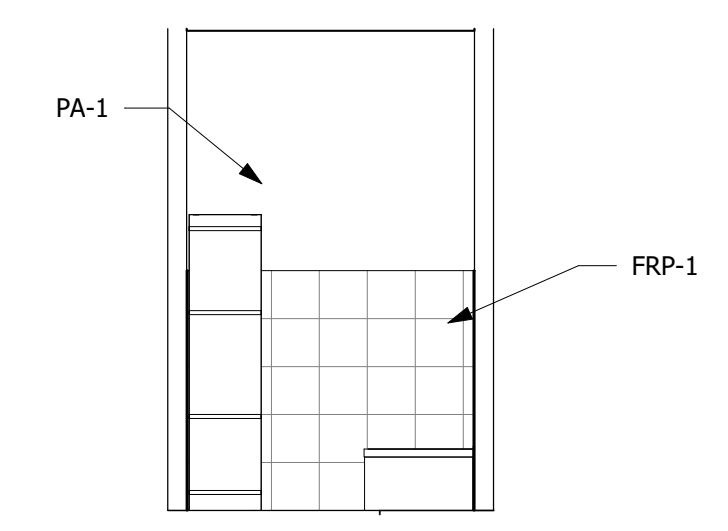
11 MINI GOLF 109 - EAST
1/4" = 1'-0"



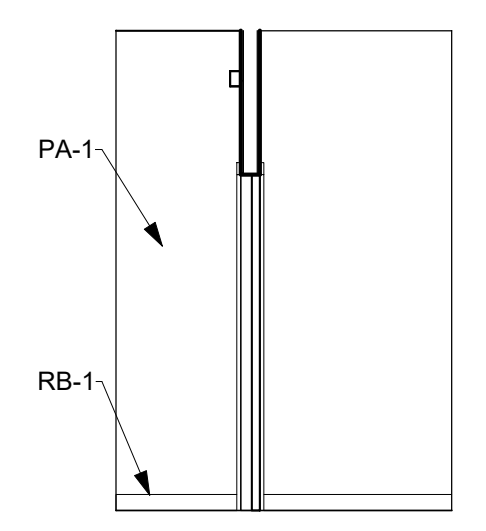
9 HALL 104
1/4" = 1'-0"



10 COMMON 100 - NORTH
1/4" = 1'-0"

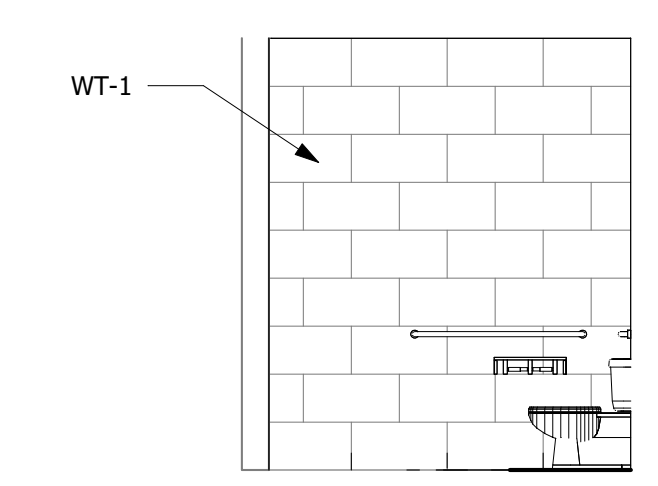


11 MINI GOLF 109 - EAST
1/4" = 1'-0"



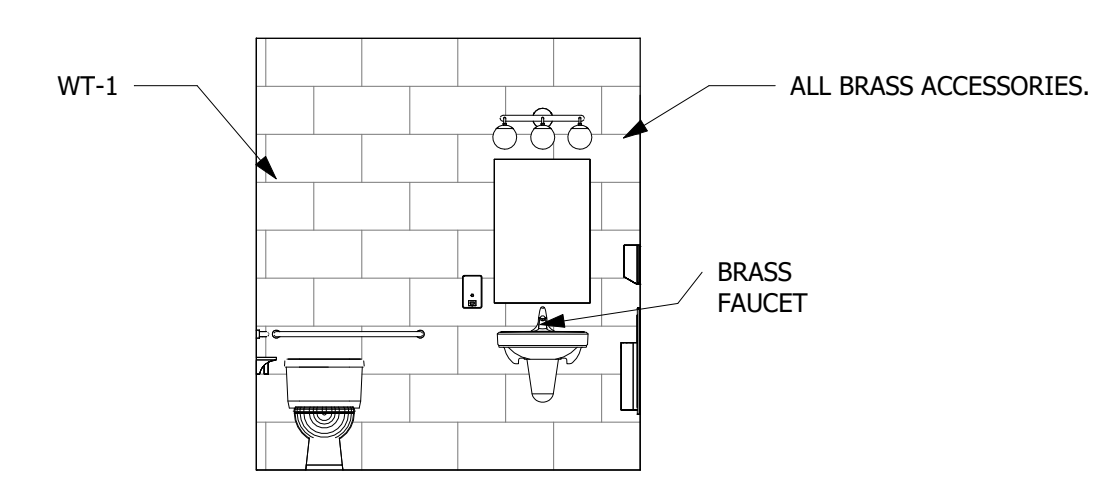
12 COMMON 100 - SOUTH
1/4" = 1'-0"

5 MENS RR 106 - WEST
1/4" = 1'-0"



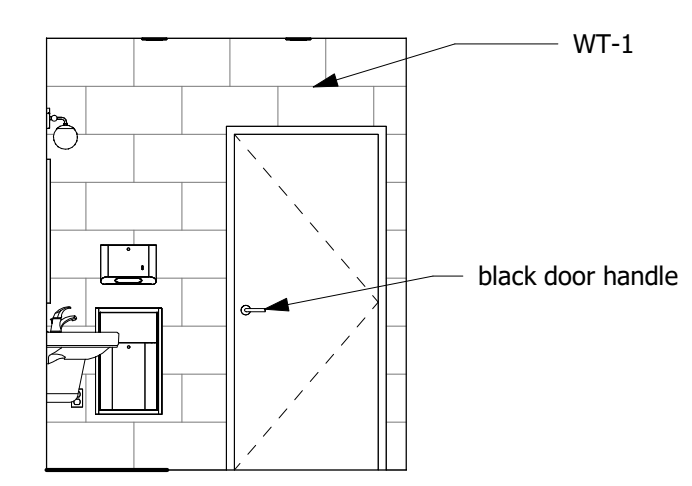
5 MENS RR 106 - WEST
1/4" = 1'-0"

6 MENS RR 106 - EAST
1/4" = 1'-0"



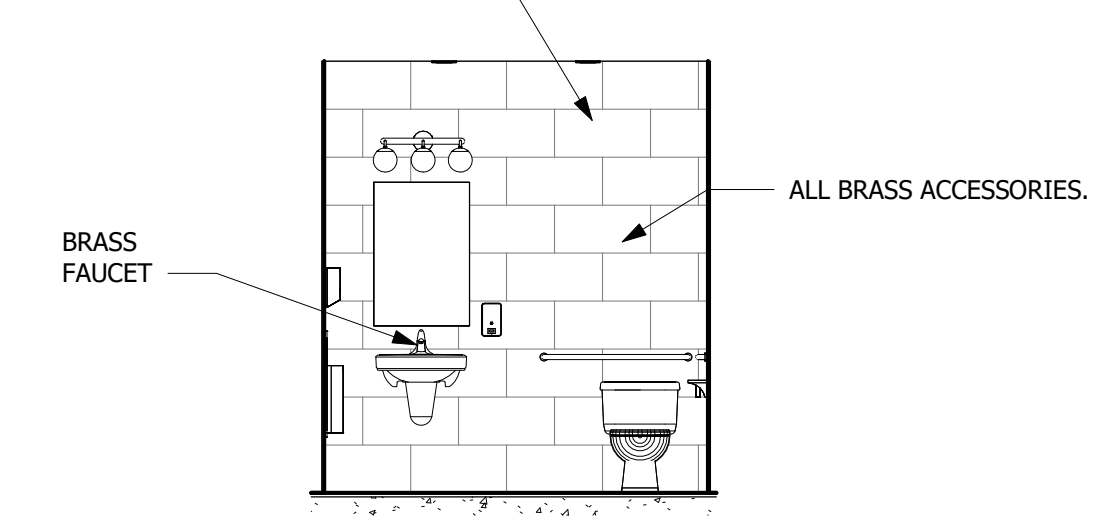
6 MENS RR 106 - EAST
1/4" = 1'-0"

7 STORAGE 107
1/4" = 1'-0"



3 WOMENS RR 105 - WEST
1/4" = 1'-0"

8 ELEC 108
1/4" = 1'-0"



4 MENS RR 106 - NORTH
1/4" = 1'-0"

2 WOMENS RR 105 - SOUTH
1/4" = 1'-0"

C:\Users\PC1022\Documents\Acorn Golf Club_VIS_2026\260110_gm\int.dwg