



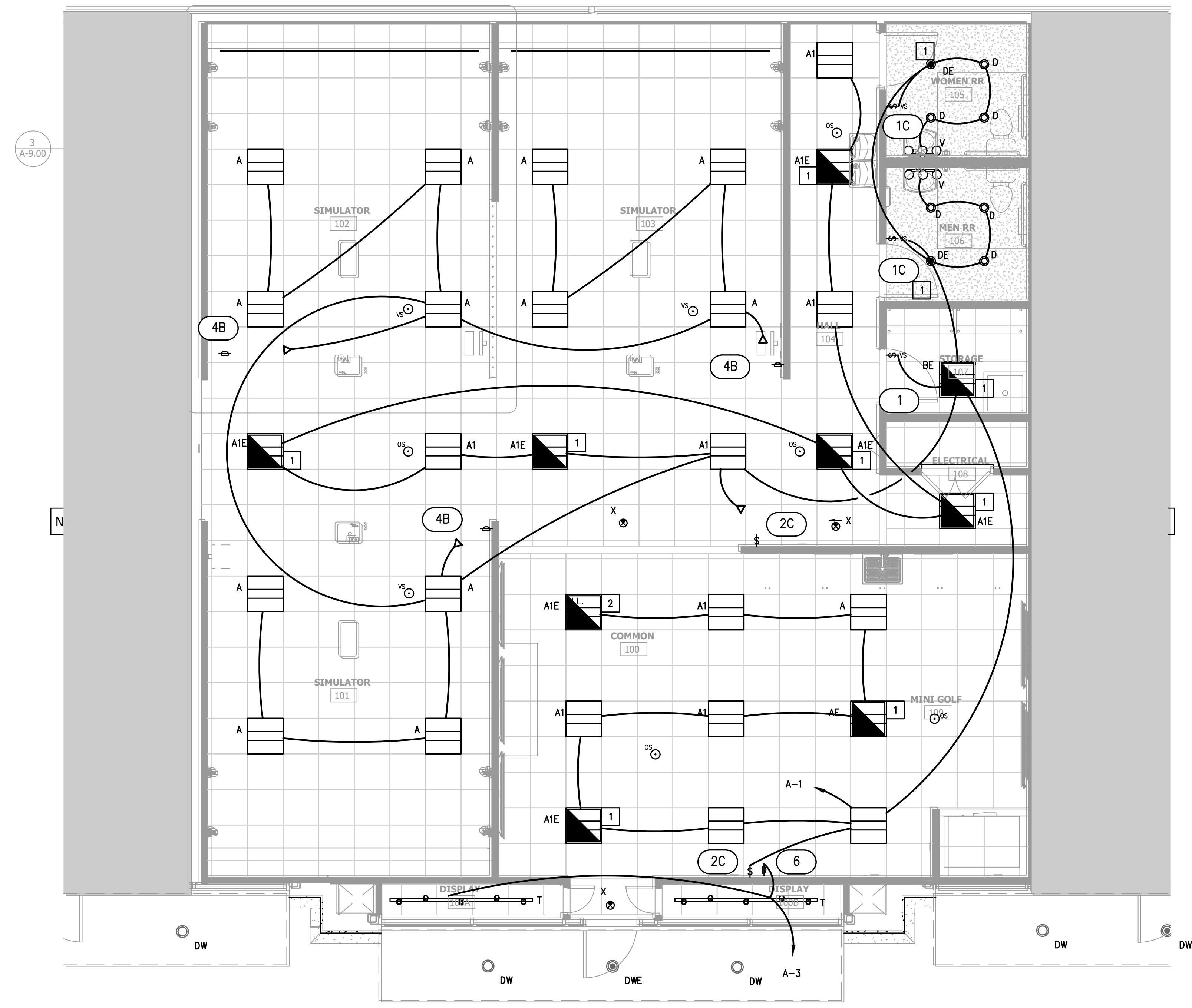
ARCHITECTURE PLANNING INTERIOR DESIGN
 15810 PARK TEN PLACE, SUITE 300
 HOUSTON, TEXAS 77084
 713-465-4650
 www.sligroup.com

© COPYRIGHT



ACORN GOLF SIMULATOR
 13825 Timber Forest Dr, Houston, TX 77044
 SUITE 103

E/B/E PROJECT NUMBER: 26052.00



ELECTRICAL LIGHTING CONTROL NOTES:

- TIMECLOCK TO BE INTERMATIC ET2100 SERIES WITH TWO INDEPENDENT OUTPUTS AND HOLIDAY FUNCTION.
 TIME CLOCK FEATURES:
 A. 365-DAY PROGRAMMABLE CLOCK WITH 48 ON/48 OFF FEATURES.
 B. AUTOMATIC DAYLIGHT SAVING TIME (DST) ON/OFF ADJUSTMENT.
 C. NON-VOLATILE EEPROM MEMORY FOR LIFETIME PROGRAMMING PROTECTION.
 D. TEMPORARY OVERRIDE OR PERMANENT MANUAL OVERRIDE AVAILABLE VIA CONTROL BUTTONS.
 E. ADDITIONAL MODE OF OPERATION ALLOWS FOR ON/OFF BUTTONS TO BECOME A 2 HOUR OVERRIDE CONTROL.
 F. 100-HOUR SUPERCAPACITOR ELIMINATES BATTERY DEPENDENCY.
 G. 50 HOLIDAY BLOCKS WITH SCHEDULES.
- CIRCUIT TO BE CONTROLLED BY TIMECLOCK OUTPUT WITH 2-HOUR TIMED OVERRIDE SWITCH:
 A-3 (DISPLAY TRACK LIGHTS)
- CIRCUIT TO BE CONTROLLED BY TIMECLOCK OUTPUT
 A-5 (SIGN)

01 ELECTRICAL LIGHTING PLAN
 SCALE: 1/4"=1'-0"

ELECTRICAL LIGHTING KEYED NOTES:

- CROSS HATCHING INDICATES EMERGENCY LIGHTING. FIXTURE TO BE CONNECTED TO UN-SWITCHED HOT CONDUCTOR WITH 2#10, 1/2" C . PROVIDE FIXTURE WITH 90 MINUTE EMERGENCY BATTERY PACK. FIXTURE TO BE SWITCHED AS SHOWN UNDER NORMAL CONDITIONS.
- CROSS HATCHING INDICATES EMERGENCY LIGHTING. FIXTURE TO BE CONNECTED TO UN-SWITCHED HOT CONDUCTOR WITH 2#10, 1/2" C . PROVIDE FIXTURE WITH 90 MINUTE EMERGENCY BATTERY PACK. FIXTURE TO RUN CONTINUOUSLY AND UN-SWITCHED.
- PROVIDE ON/OFF TOGGLE SWITCH AT THIS LOCATION FOR LIGHT CONTROL.

The information, ideas, designs, details, layouts, techniques, features, arrangements, plans, sequences, dimensions, allowances, tolerances, conceptions, specifications, intentions, technology or embodiments, as illustrated, arranged, displayed, noted, recorded, indicated, represented, disclosed, evidenced, detailed or otherwise reduced to tangible form hereon, either expressly, inherently or by implication, are the confidential and proprietary information of SLI Design, Inc. and shall not be used for any purpose other than the specific project or undertaking identified on the drawing title block or legend for which they are and have been prepared by SLI Design, Inc. Any other reproduction, disclosure or use of any portion of the confidential and proprietary information of SLI Design, Inc. shall be a breach of the obligation of confidence created by the acceptance of this drawing from SLI Design, Inc. for a specific project or Contract. Any copying, duplicating, reproducing, utilization, alteration, modification, revision or change to this drawing, is expressly prohibited unless done with the prior written consent or approval of SLI Design, Inc. and shall not be undertaken without receipt of such prior written approval. This drawing is loaned by SLI Design, Inc. for the limited purpose of complying with a specific Contract. The drawing remains the property of SLI Design, Inc. and shall be returned upon request or completion of the contract, unless specifically authorized by Contract, under which it was loaned.

DESIGN TEAM
 PM: JG
 MECHANICAL: CC
 ELECTRICAL: JG
 CHECKED-BY:

DRAWING TITLE
ELECTRICAL LIGHTING PLAN

SHEET NO.

E-2.00

E/B/E Mechanical
 Electrical
 Plumbing
 CONSULTING ENGINEERS
 12803 Southwest Fwy, Ste 170, Stafford, TX 77477
 Tel: (713) 840-0177 / Firm Reg. No: 5638

