

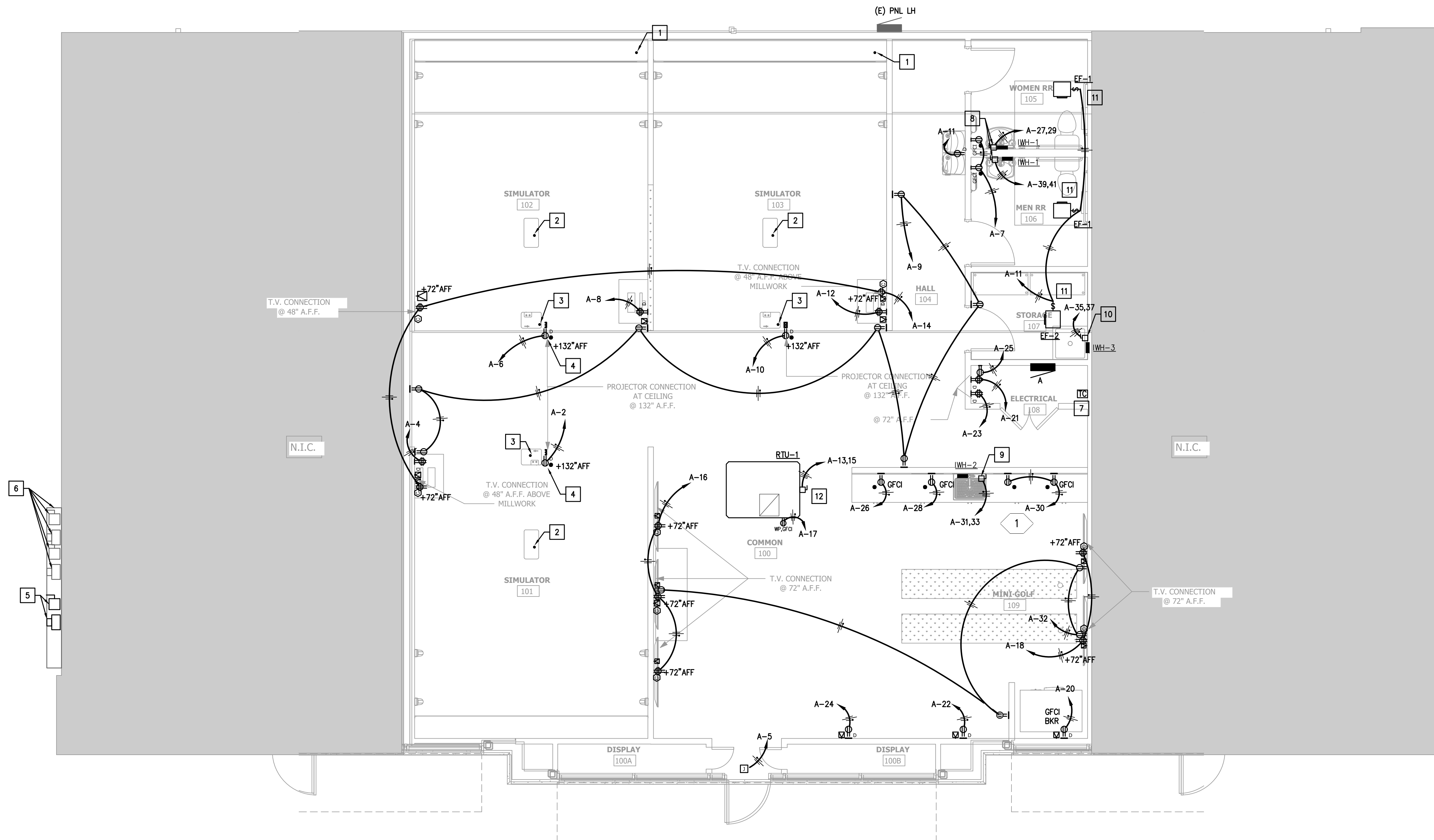


ARCHITECTURE PLANNING INTERIOR DESIGN  
 15810 PARK TEN PLACE, SUITE 300  
 HOUSTON, TEXAS 77084  
 713-465-4650  
 www.sligroup.com

ACORN GOLF SIMULATOR  
 13825 Timber Forest Dr, Houston, TX 77044  
 SUITE 103



E/P/B PROJECT NUMBER: 26052.00



**01 ELECTRICAL POWER PLAN**  
 SCALE: 1/4"=1'-0"

**ELECTRICAL POWER KEYED NOTES:**

- 1 PROVIDE 1.5" CONDUIT FROM TRACKING SYSTEM TO CPU WITH PULL STRING. COORDINATE EXACT LOCATION PRIOR TO COMMENCEMENT OF WORK.
- 2 PROVIDE 1.5" CONDUIT FROM ION CAMERA TO CPU WITH PULL STRING. COORDINATE EXACT LOCATION PRIOR TO COMMENCEMENT OF WORK.
- 3 PROVIDE 1.5" CONDUIT FROM PROJECTOR TO CPU WITH PULL STRING. COORDINATE EXACT LOCATION PRIOR TO COMMENCEMENT OF WORK.
- 4 CEILING MOUNTED DUPLEX FOR PROJECTOR.
- 5 NEW METER AND DISCONNECT LOCATION. REFER TO RISER DIAGRAM FOR MORE INFORMATION. COORDINATE EXACT LOCATION IN FIELD PRIOR TO COMMENCEMENT OF WORK.
- 6 EXISTING WIRE GUTTER, METERS AND DISCONNECTS. VERIFY EXACT LOCATION.
- 7 TIMECLOCK LOCATION. REFER TO LIGHTING CONTROL NOTES FOR MORE INFORMATION.
- 8 PROVIDE 30A./NF/240V/2-POLE/NEMA 1 DISCONNECT IN ACCESSIBLE LOCATION.
- 9 PROVIDE 60A./NF/240V/2-POLE/NEMA 1 DISCONNECT IN ACCESSIBLE LOCATION.
- 10 PROVIDE 100A./NF/240V/2-POLE/NEMA 1 DISCONNECT IN ACCESSIBLE LOCATION.
- 11 PROVIDE 20A./120V./HD TOGGLE SWITCH IN ACCESSIBLE LOCATION.
- 12 PROVIDE 100A./NF/240V/2-POLE/NEMA 3R DISCONNECT IN ACCESSIBLE LOCATION.

| ISSUED FOR CLIENT APPROVAL | DATE       |
|----------------------------|------------|
| ISSUED FOR BIDDING         | 04/09/2026 |
| ISSUED FOR PERMIT          |            |
| ISSUED FOR CONSTRUCTION    |            |

| REVISIONS |                   |            |
|-----------|-------------------|------------|
| MARK      | DESCRIPTION       | DATE       |
|           | REVIEW SET        | 03/27/2026 |
|           | ISSUE FOR BID SET | 04/09/2026 |

The information, ideas, design, details, layouts, techniques, features, arrangements, plans, sequences, dimensions, allowances, tolerances, conceptions, specifications, intentions, technology or embodiments, as illustrated, arranged, displayed, noted, recorded, indicated, represented, disclosed, evidenced, detailed or otherwise reduced to tangible form hereon, either expressly, inherently or by implication, are the confidential and proprietary information of SLI Design, Inc. and shall not be used for any purpose other than the specific project or undertaking identified on the drawing title block or legend for which they are and have been prepared by SLI Design, Inc. Any other reproduction, disclosure or use of any portion of the confidential and proprietary information of SLI Design, Inc. shall be a breach of the obligation of confidence created by the acceptance of this drawing from SLI Design, Inc. for a specific project or Contract. Any copying, duplicating, reproducing, utilization, alteration, modification, revision or change to this drawing, is expressly prohibited unless done with the prior written consent or approval of SLI Design, Inc. and shall not be undertaken without receipt of such prior written approval. This drawing is loaned by SLI Design, Inc. for the limited purpose of complying with a specific Contract. The drawing remains the property of SLI Design, Inc. and shall be returned upon request or completion of the contract, unless specifically authorized by Contract, under which it was loaned.

DESIGN TEAM  
 PM: JG  
 MECHANICAL: CC  
 ELECTRICAL: JG  
 CHECKED-BY:

DRAWING TITLE  
**ELECTRICAL POWER PLAN**

SHEET NO.

**E-3.00**

**EIBIE** Mechanical  
 Electrical  
 Plumbing  
 CONSULTING ENGINEERS  
 12803 Southwest Fwy, Ste 170, Stafford, Tx 77477  
 Tel: (713) 840-0177 / Firm Reg. No: 5638

