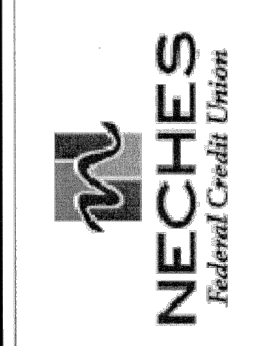
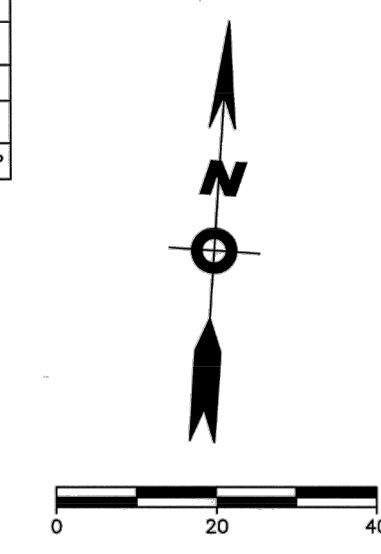


# FM 421 (AKA COUNTRY LANE DRIVE) (ASPHALT SURFACE)

BENCHMARK POINT TABLE				
B.M. #	Northing	Easting	Elevation	Row Description
1	10105099.42	4229633.23	-	TXDOT MON
2	10105231.80	4230289.38	-	1/2" IRON ROD
3	-	-	39.90	RR SPIKE IN PP



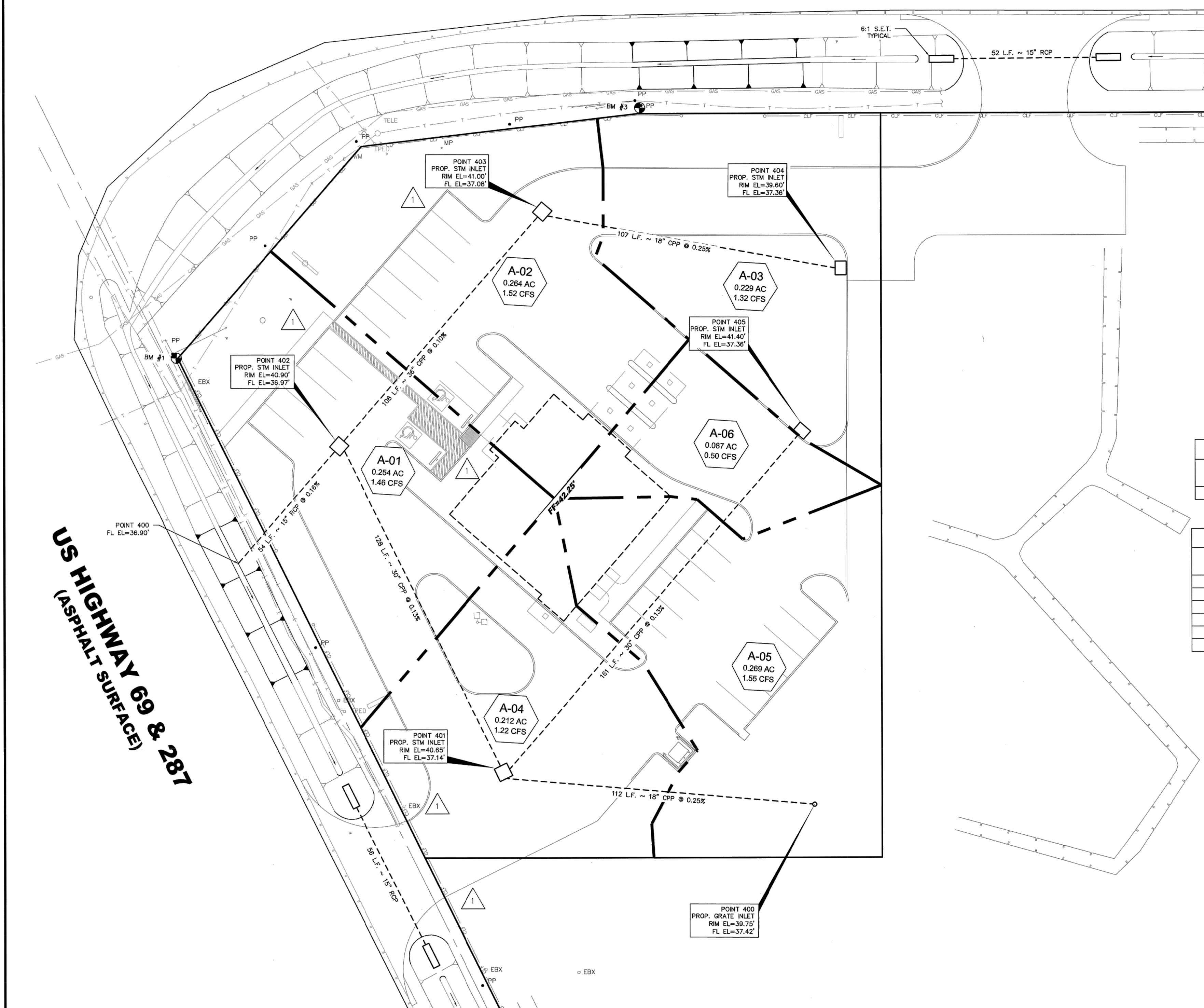
**LUMBERTON PAD SITE**  
U.S. Highway 69 and Country Lane  
Lumberton, Texas 77657

PROJECT NUMBER SLI-180

STORM SEWER POINT INFORMATION				
Point #	Northing	Easting	Description	Rim Elevation
400	10104952.42	4229676.41	GRATE INLET	39.75'
401	10104956.70	4229762.23	STORM INLET	40.65'
402	10105071.27	4229694.50	STORM INLET	40.90'
403	10105161.31	4229763.36	STORM INLET	41.00'
404	10105147.97	4229873.71	CURB INLET	39.60'
405	10105087.84	4229863.07	CURB INLET	41.50'

PRE-DEVELOPMENT RUNOFF CALCULATIONS									
Drainage Area	Area (acres)	5 Year Storm			Distance (ft)	tc (min)	I (in/hr)	Cw	Q (cfs)
		e	b	d					
DA-1	1.32	0.733	65	7.5	230	18.75	5.93	0.30	2.35

POST-DEVELOPMENT RUNOFF CALCULATIONS									
Drainage Area	Area (acres)	5 Year Storm			Distance (ft)	tc (min)	I (in/hr)	Cw	Q (cfs)
		e	b	d					
DA-1	0.254	0.733	65	7.5	81	10.00	7.98	0.72	1.46
DA-2	0.264	0.733	65	7.5	104	10.00	7.98	0.72	1.52
DA-3	0.229	0.733	65	7.5	101	10.00	7.98	0.72	1.32
DA-4	0.212	0.733	65	7.5	146	10.00	7.98	0.72	1.22
DA-5	0.269	0.733	65	7.5	94	10.00	7.98	0.72	1.54
DA-6	0.087	0.733	65	7.5	92	10.00	7.98	0.72	0.50



**US HIGHWAY 69 & 287  
(ASPHALT SURFACE)**

ISSUED FOR CLIENT APPROVAL	DATE
ISSUED FOR BIDDING	14 Apr 11
ISSUED FOR PERMIT	14 Apr 11
ISSUED FOR CONSTRUCTION	12 May 11

APPROVED BY CLIENT

REVISIONS

MARK	DESCRIPTION	DATE
1	SITE PLAN REVISION	05/12/11

The information, ideas, designs, details, layouts, techniques, features, arrangements, plans, sequences, dimensions, allowances, tolerances, concepts, specifications, intentions, technology or embodiments, as illustrated, arranged, displayed, noted, recorded, indicated, represented, disclosed, evidenced, detailed or otherwise reduced to tangible form herein, either expressly, inherently or by implication, are the confidential and proprietary information of SLI Design, Inc., and shall not be used for any purpose other than the specific project or undertaking identified on the drawing title block or legend for which they are and have been prepared by SLI Design, Inc. Any other reproduction, disclosure or use of any portion of the confidential and proprietary information of SLI Design, Inc., shall be a breach of the obligation of confidence created by the acceptance of this drawing from SLI Design, Inc. for a specific project or contract. Any copying, disseminating, reproducing, utilization, alteration, modification, revision or change to this drawing, is expressly prohibited unless done with the prior written consent or approval of SLI Design, Inc., and shall not be undertaken without receipt of such prior written approval. This drawing is issued by SLI Design, Inc., for the limited purpose of complying with a specific contract. The drawing remains the property of SLI Design, Inc., and shall be returned upon request or completion of the contract, unless specifically authorized by contract, under which it was issued.

PRINT DATE

DATE	REVISION
04/10/2026	ISSUE FOR PERMIT AND BID



**ARCENEUX & GATES**  
Consulting Engineers, Inc.  
Engineers Surveyors Planners

DRAWING TITLE	DRAINAGE AREA LAYOUT	
DRAWN BY	A.R.C.	SHEET NO.
CHECKED BY	M.A.O.	C7
APPROVED BY	J.M.W.	

**PRO CONSULTING**  
1334 Britton Road  
Suite # 2808  
Houston, TX 77043  
Firm License F-21665  
www.pro.consulting

CONSTRUCTION PLANS FOR  
**NECHES FEDERAL CREDIT UNION  
- LUMBERTON BRANCH  
PARKING ADDITION**  
(PRIVATE ON-SITE)  
PAVING & DRAINAGE FACILITIES

299 COUNTRY LANE DRIVE,  
LUMBERTON, TEXAS 77657

**EXISTING DRAINAGE AREA MAP  
(FOR REFERENCE ONLY)**

PRO-E PROJECT NO.: 1018-0015	
SUBMITTED:	DESIGNED BY: JAS
SCALE: N/A	DRAWN BY: KH/JPB
DATE: APRIL, 2026	SHEET NO. C5 OF C9
SURVEYED BY:	CITY DWG NO.: