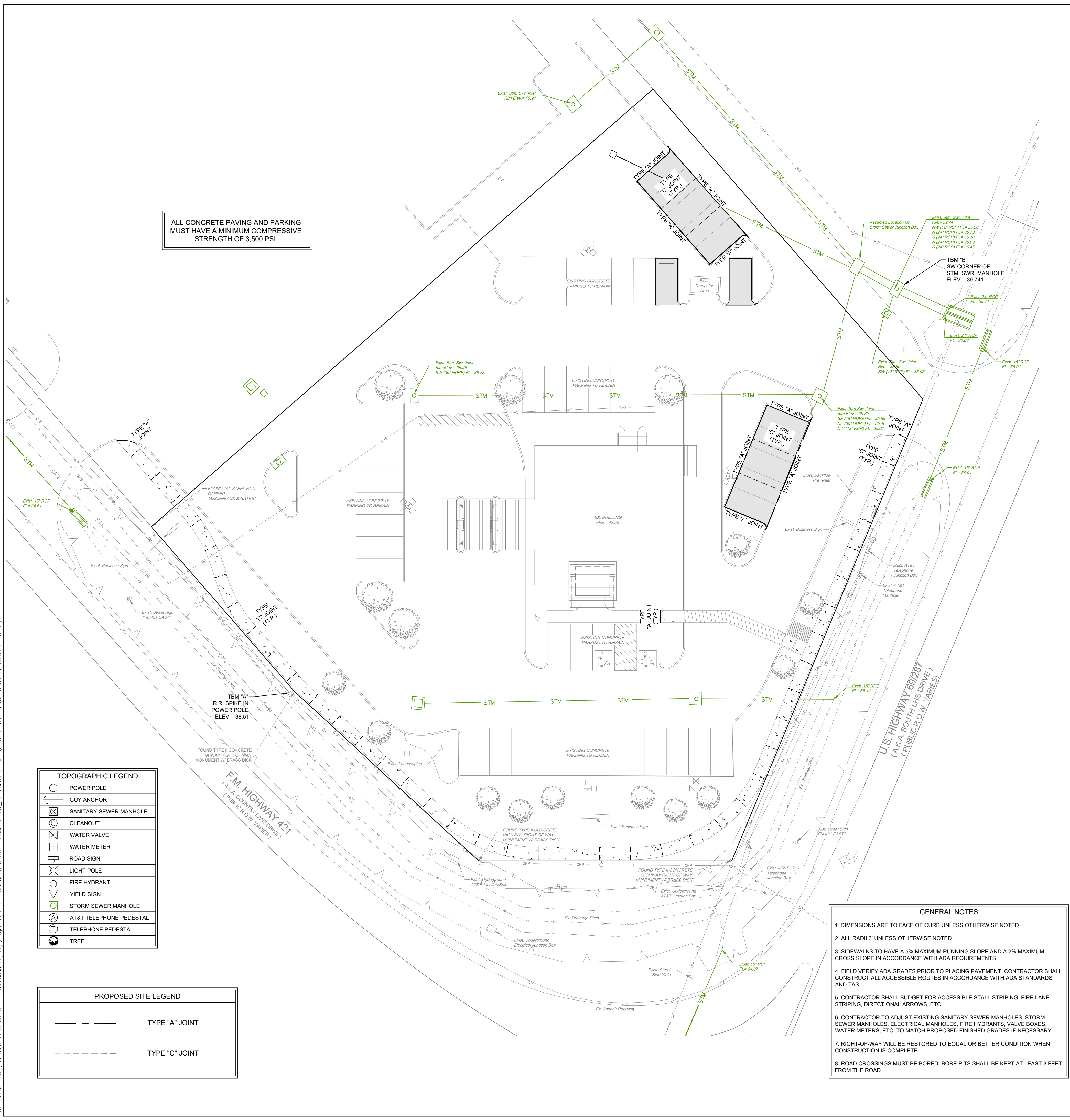


ALL CONCRETE PAVING AND PARKING MUST HAVE A MINIMUM COMPRESSIVE STRENGTH OF 3,500 PSI.



ALL CONCRETE PAVING AND PARKING MUST HAVE A MINIMUM COMPRESSIVE STRENGTH OF 3,500 PSI.

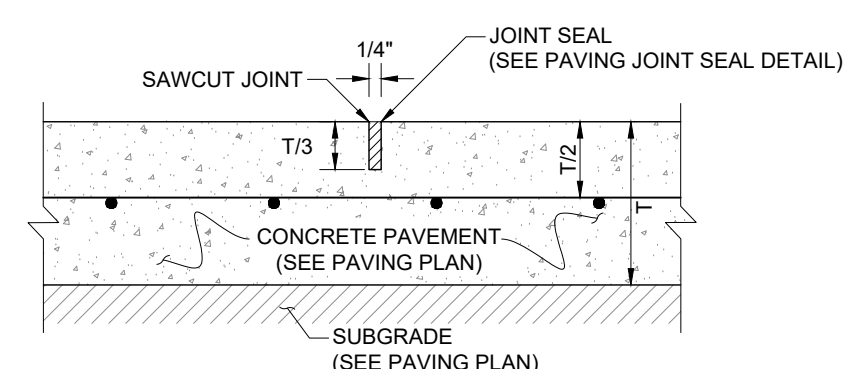
TOPOGRAPHIC LEGEND

	POWER POLE
	GUY ANCHOR
	SANITARY SEWER MANHOLE
	CLEANOUT
	WATER VALVE
	WATER METER
	ROAD SIGN
	LIGHT POLE
	FIRE HYDRANT
	YIELD SIGN
	STORM SEWER MANHOLE
	AT&T TELEPHONE PEDESTAL
	TELEPHONE PEDESTAL
	TREE

PROPOSED SITE LEGEND

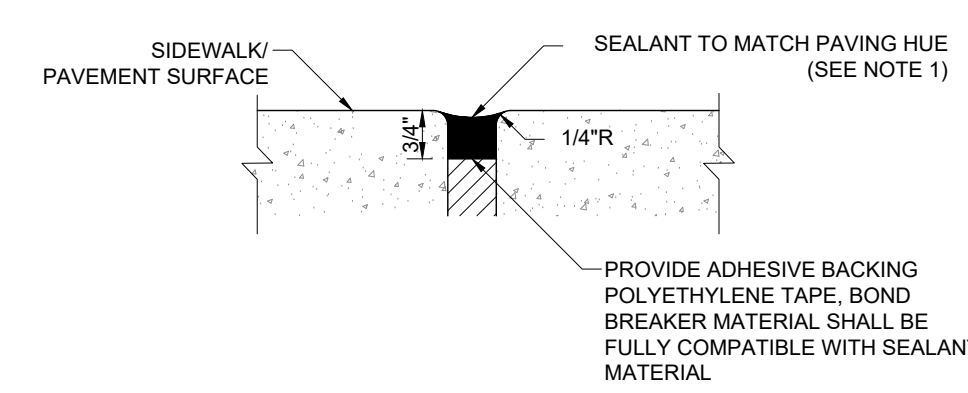
	TYPE "A" JOINT
	TYPE "C" JOINT

- GENERAL NOTES**
- DIMENSIONS ARE TO FACE OF CURB UNLESS OTHERWISE NOTED.
 - ALL RADII 3' UNLESS OTHERWISE NOTED.
 - SIDEWALKS TO HAVE A 5% MAXIMUM RUNNING SLOPE AND A 2% MAXIMUM CROSS SLOPE IN ACCORDANCE WITH ADA REQUIREMENTS.
 - FIELD VERIFY ADA GRADES PRIOR TO PLACING PAVEMENT. CONTRACTOR SHALL CONSTRUCT ALL ACCESSIBLE ROUTES IN ACCORDANCE WITH ADA STANDARDS AND TAS.
 - CONTRACTOR SHALL BUDGET FOR ACCESSIBLE STALL STRIPING, FIRE LANE STRIPING, DIRECTIONAL ARROWS, ETC.
 - CONTRACTOR TO ADJUST EXISTING SANITARY SEWER MANHOLES, STORM SEWER MANHOLES, ELECTRICAL MANHOLES, FIRE HYDRANTS, VALVE BOXES, WATER METERS, ETC. TO MATCH PROPOSED FINISHED GRADES IF NECESSARY.
 - RIGHT-OF-WAY WILL BE RESTORED TO EQUAL OR BETTER CONDITION WHEN CONSTRUCTION IS COMPLETE.
 - ROAD CROSSINGS MUST BE BORED. BORE PITS SHALL BE KEPT AT LEAST 3 FEET FROM THE ROAD.



- GENERAL NOTES:**
- REFER TO PAVING PLAN FOR SAWCUT JOINT SPACING.
 - INSTALLATION OF SAWCUT JOINT TO BE PERFORMED WITHIN 12 HOURS OF CONCRETE POUR.
 - TOOLED JOINTS ARE NOT ALLOWED, ONLY SAWCUT JOINTS.
 - CONCRETE SHALL CURE LONG ENOUGH BEFORE SAW CUTTING TO PREVENT SPALLING OF JOINT WHEN CUTTING.
 - REFER TO PAVING PLAN AND GEOTECHNICAL REPORT FOR PAVEMENT THICKNESS (T) AND REBAR DEPTH TO AVOID SAW CUTTING REINFORCEMENT BARS.

PAVING SAWCUT JOINT
N.T.S.



- GENERAL NOTES:**
- UTILIZE THE 900/901 POLYURETHANE SEALANT MANUFACTURED BY TREMCO, CLEVELAND OHIO IN ACCORDANCE TO ASTM C820, TYPE M (OR APPROVED EQUAL).
 - JOINT SEALANT TO BE APPLIED IN ACCORDANCE WITH ASTM 03405.
 - VERIFY WITH OWNER AND ENGINEER FOR ANY ADDITIONAL REQUIREMENTS.
 - PROVIDE A CLEAN AND PROPER INSTALLATION OF SEALANT PER MANUFACTURER'S RECOMMENDATIONS.

PAVING JOINT SEALANT
N.T.S.

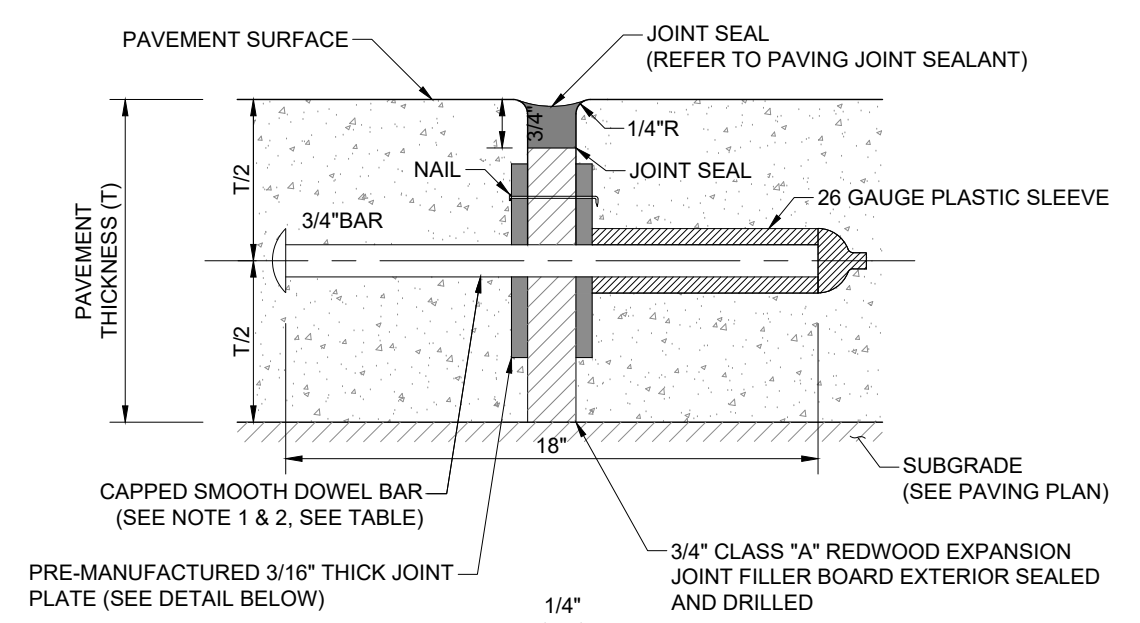
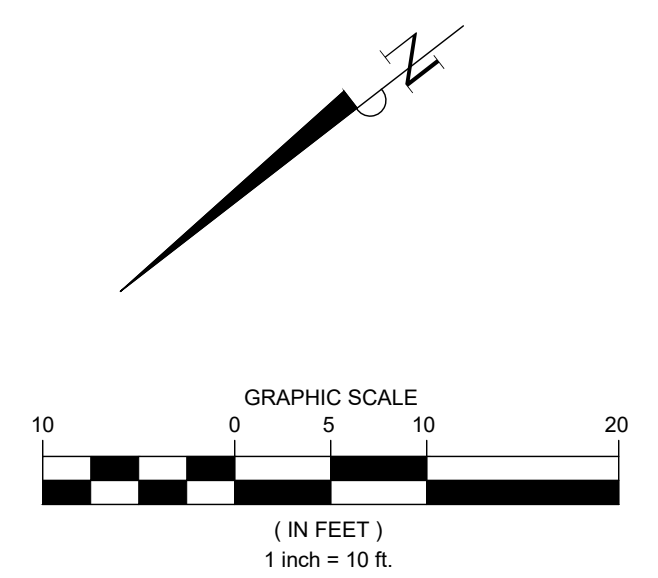


TABLE ONE

PAVEMENT THICKNESS (IN.)	DOWEL SIZE (IN.)	LENGTH (IN.)	SPACING (IN.)
5	3/4	18	12
6	3/4	18	12
7	1	18	12
8	1	18	12

- GENERAL NOTES:**
- DOWEL SIZE DEPENDANT UPON PAVING THICKNESS, REFER TO GEOTECHNICAL REPORT FOR SPECIFICATIONS.
 - REFER TO GEOTECHNICAL REPORT FOR DOWEL AND EXPANSION JOINT SPACING.
 - REFER TO PAVING PLAN FOR PAVING THICKNESS (T).

PAVING DOWEL AT EXPANSION JOINT
N.T.S.



TEMPORARY BENCHMARK "A": ELEV: 38.51'
BEING A RAILROAD SPIKE EMBEDDED IN A POWER POLE. IT IS LOCATED ±110' FROM THE NORTHWESTERN CORNER OF THE PROPERTY. IT IS ALSO LOCATED ±90' FROM THE NORTHEASTERN CORNER OF THE PROPERTY.

TEMPORARY BENCHMARK "B": ELEV: 39.74'
BEING THE SOUTHWESTERN CORNER OF A STORM SEWER MANHOLE. IT IS LOCATED ±60' FROM THE SOUTHWESTERN CORNER OF THE PROPERTY. IT IS ALSO LOCATED ±135' FROM THE SOUTHEASTERN CORNER OF THE PROPERTY.

FLOOD STATEMENT:
THIS PROPERTY LIES WITHIN ZONE "X-UNSHADED" AREAS DETERMINED TO BE OUTSIDE 500-YEAR FLOODPLAIN PER THE FLOOD INSURANCE RATE MAP, COMMUNITY PANEL NO. 48199C0530F WHICH BEARS AN EFFECTIVE DATE OCTOBER 6, 2010.

PRO CONSULTING
1334 Britton Road
Suite # 2808
Houston, TX 77043
Firm License F-21665
www.pro.consulting



DATE	REVISION
04/10/2026	ISSUE FOR PERMIT AND BID

CONSTRUCTION PLANS FOR
NECHES FEDERAL CREDIT UNION - LUMBERTON BRANCH
PARKING ADDITION
(PRIVATE ON-SITE)
PAVING & DRAINAGE FACILITIES

299 COUNTRY LANE DRIVE,
LUMBERTON, TEXAS 77657

CONTROL JOINT PLAN

PRO-E PROJECT NO.: 1018-0015
SUBMITTED: SCALE: 1" = 20'
DRAWN BY: KHL/JP
SHEET NO. C7 OF C9
DATE: APRIL, 2026
SURVEYED BY: CITY DWG NO.: