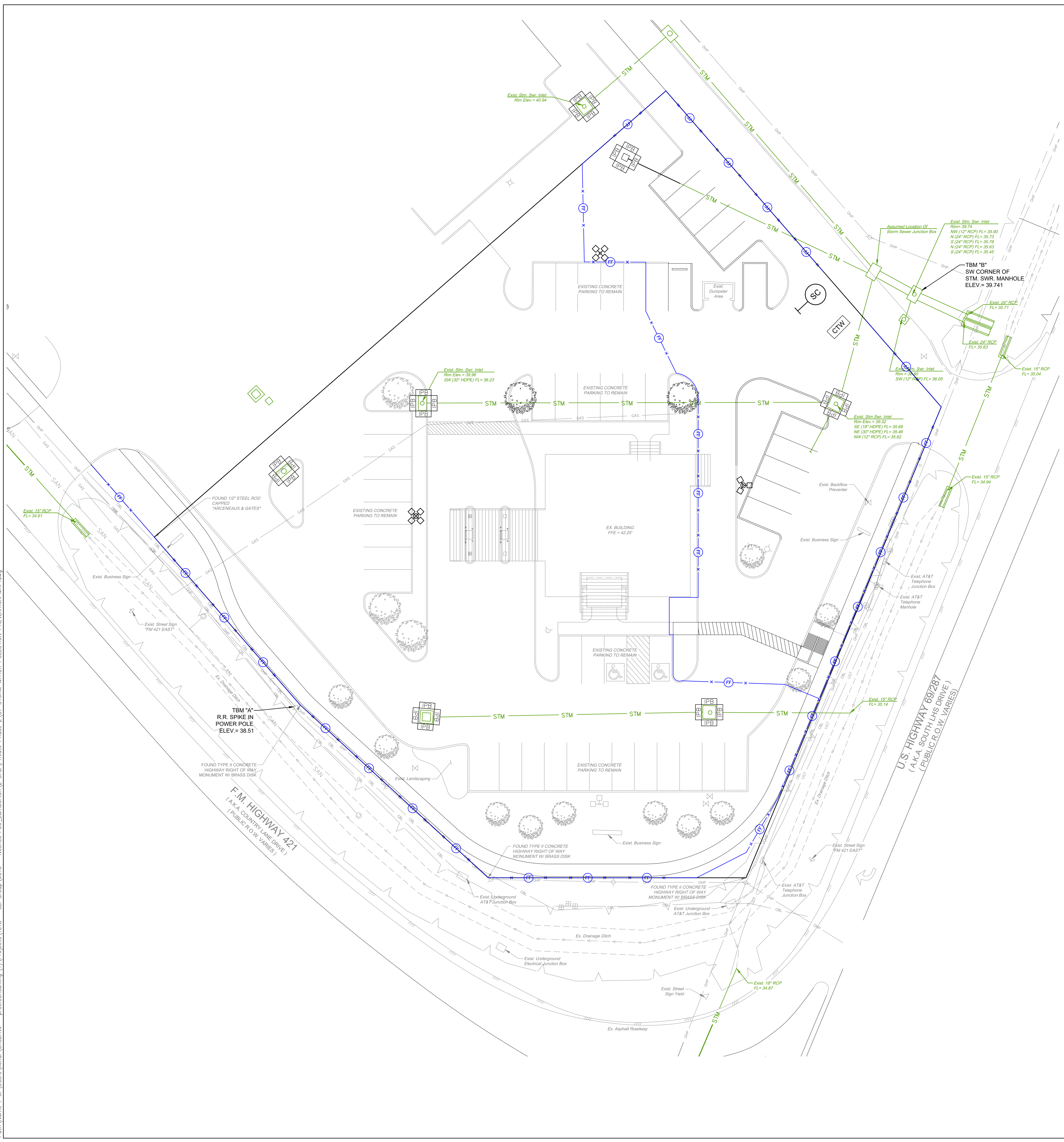


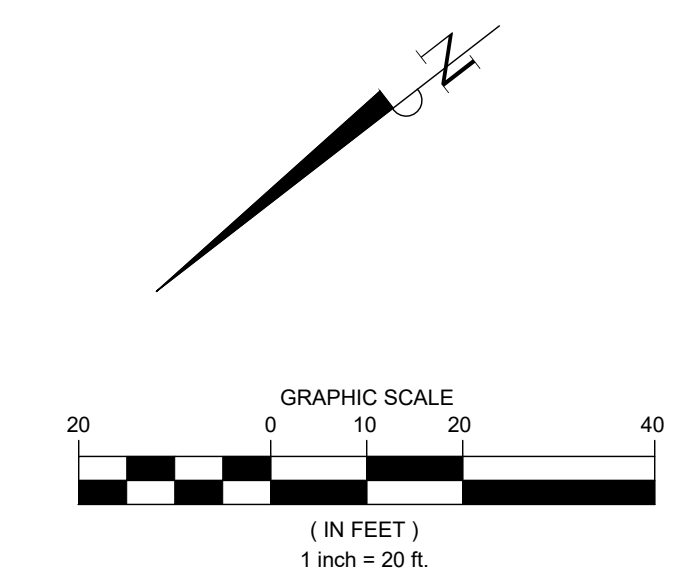
Date: Fri, 10 Apr 2026 - 10:56am
 User: Name: khr
 Path: C:\Users\khr\OneDrive - proconsulting.com\OneDrive - proconsulting.com\Projects\1018 - SU_Group\0015 - Neches FCD_Lumberton_V2 CAD\Private Phase 2\07 STORM WATER POLLUTION PREVENTION MAP.dwg



LEGEND	
SYMBOL	DESCRIPTION
	STAGE I AND STAGE II INLET PROTECTION BARRIER
	STABILIZED CONSTRUCTION ACCESS
	CONCRETE TRUCK WASHOUT AREA
	FILTER FABRIC FENCE

NOTE: ALL GRASS AREAS TO BE SEED AND/OR SODDED. GRASS AREA TO BE MAINTAINED UNTIL ROOTS ARE ESTABLISHED.

TOPOGRAPHIC LEGEND	
	POWER POLE
	GUY ANCHOR
	SANITARY SEWER MANHOLE
	CLEANOUT
	WATER VALVE
	WATER METER
	ROAD SIGN
	LIGHT POLE
	FIRE HYDRANT
	YIELD SIGN
	STORM SEWER MANHOLE
	AT&T TELEPHONE PEDESTAL
	TELEPHONE PEDESTAL
	TREE



TEMPORARY BENCHMARK "A": ELEV: 38.51'
 BEING A RAILROAD SPIKE EMBEDDED IN A POWER POLE. IT IS LOCATED ±110' FROM THE NORTHWESTERN CORNER OF THE PROPERTY. IT IS ALSO LOCATED ±90' FROM THE NORTHEASTERN CORNER OF THE PROPERTY.

TEMPORARY BENCHMARK "B": ELEV: 39.74'
 BEING THE SOUTHWESTERN CORNER OF A STORM SEWER MANHOLE. IT IS LOCATED ±60' FROM THE SOUTHWESTERN CORNER OF THE PROPERTY. IT IS ALSO LOCATED ±135' FROM THE SOUTHEASTERN CORNER OF THE PROPERTY.

FLOOD STATEMENT:
 THIS PROPERTY LIES WITHIN ZONE "X-UNSHADED" AREAS DETERMINED TO BE OUTSIDE 500-YEAR FLOODPLAIN PER THE FLOOD INSURANCE RATE MAP, COMMUNITY PANEL NO. 48199C0530F WHICH BEARS AN EFFECTIVE DATE OCTOBER 6, 2010.

PRO CONSULTING
 1334 Brittmoores Road
 Suite # 2808
 Houston, TX 77043
 Firm License F-21665
 www.proconsulting.com

STATE OF TEXAS
 JUSTIN A. SCHRADER
 103758
 APR 10 2026
Justin A. Schrader

DATE	REVISION
04/10/2026	ISSUE FOR PERMIT AND BID

CONSTRUCTION PLANS FOR
NECHES FEDERAL CREDIT UNION - LUMBERTON BRANCH
PARKING ADDITION
 (PRIVATE ON-SITE)
 PAVING & DRAINAGE FACILITIES

299 COUNTRY LANE DRIVE,
 LUMBERTON, TEXAS 77657

STORM WATER POLLUTION PREVENTION MAP

PRO-E PROJECT NO.: 1018-0015	
SUBMITTED: SCALE: 1" = 20' DATE: APRIL, 2026 SURVEYED BY:	DESIGNED BY: JAS DRAWN BY: KHL/JPB SHEET NO. C8 OF C9 CITY DWG NO.:

PRIVATE PLANS - NECHES FEDERAL CREDIT UNION - LUMBERTON BRANCH - PARKING ADDITION; PROJECT NUMBER : 1018-0015